

SYDNEY BIOMEDICAL ACCELERATOR FORTNIGHTLY CONSTRUCTION UPDATE

ISSUE 21
29 APRIL 2026

CONSTRUCTION UPDATE

Over the past fortnight, steady progress has continued with concrete pours, core construction, and in-ground services all moving ahead. Key activity has focused on advancing the building cores, completing several concrete pours, and continuing work in the lower levels.

Work in the lower ground levels—where future back-of-house and building support areas will be located—has continued to progress. Several concrete foundations (pile caps) have been completed, forming part of the structure that will support the building above. Preparation for upcoming floor slabs has also progressed across these areas.

The building cores, which will house lifts and stairs, have continued to rise, with one core reaching up to Level 4. These structures are key to how people will move through the building once complete, and their steady progress is an important step forward for the project.

Underground services and early concrete works are continuing across Level 1, which will house future labs, workspaces, and key support areas including the loading dock and substation. This includes installing drainage, sewer, and electrical systems that will support the building's day-to-day operation once open.

Concrete works have remained a major focus, including the first suspended concrete pour on Level 1 and several smaller foundation pours across the site. These activities are helping to shape the building's footprint and prepare for the next stages of construction above ground.

Excavation and site preparation have continued around site edges, including ground level finalisation and soil stabilisation, with minor weather delays having little impact on overall progress. Focus now shifts to completing foundations, progressing lift and stair cores, and continuing service installations ahead of visible structure works.

AUSTRALIA'S BIGGEST BBQ

Ahead of the long weekend, the SBA site came together to support Australia's Biggest BBQ, raising funds for the [Touched By Christopher Foundation](#). The event was catered by [Burek on Wheels](#), a family-run food truck serving freshly made traditional burek, which helped create a great atmosphere and a welcome shared break for the team.

Events like this are a strong reminder of the sense of community on site and the value of supporting causes that make a real difference.

The [Touched By Christopher Foundation](#) provides financial support to families experiencing the loss of a child, helping them take time to grieve and begin to rebuild.

Thank you to everyone who took part and contributed—great turnout, positive energy, and a meaningful cause supported by the SBA team.



Friday's BBQ in support of the Touched By Christopher Foundation

WHAT'S UPCOMING

*weather and permits dependent

ACTIVITY	START	FINISH (APPROX)*
Substructure (including B1 & L1, and staged Blackburn & Link Bridge piling works)	August 2025	Mid October 2026
Core Walls / Jumpforms	October 2025	Mid October 2026
Structure (L2 and above)	Mid April 2026	Mid April 2027
Post-Tensioning	Late April 2026	Mid November 2026
External Works & Landscaping	Late April 2026	Early November 2027

SUBSTRUCTURE

- Completion of remaining pile cap works across key zones within lower levels.
- Continued detailed excavation and re-establishment of work areas within Asbestos Containing Material (ACM) zones.
- Ongoing installation of underground services and drainage to support future slab construction.
- Continued preparation for Level 1 slab-on-ground areas, including reinforcement, formwork, and waterproofing works.
- Ongoing shotcrete works to stabilise excavation batters and support structural progression.

CORE WALLS / JUMPFORMS

- Core 3 - continuing core wall, stair, and lift lobby construction with staged formwork, reinforcement, and pours.
- Core 2 - progressing lift lobby and stair construction as vertical works continue from Level 1 upward.
- Core 1 - jumpform continuing assembly and climbing works through lower to mid-level progression.

STRUCTURE (L2 AND ABOVE)

- Commencement and progression of Level 2 structural works.
- Installation of columns and formwork across multiple zones.
- Staged suspended slab and beam construction activities progressing through the structure.
- Reinforcement and concrete works delivered in sequence to support safe structural build-out above Level 1.

POST-TENSIONING

- Post-tensioning works commence late April.
- Installation and stressing of high-strength cables within structural slabs following concrete pours.
- Works coordinated closely with slab construction and curing periods.

EXTERNAL WORKS

- Early establishment of bulk vessel compound - secured service area for site gas infrastructure.
- Initial setup of external service infrastructure to support site utilities.
- Early preparation works for future external services and landscaping zone.



Image: inside look of the steel reinforcement internal to Core 2

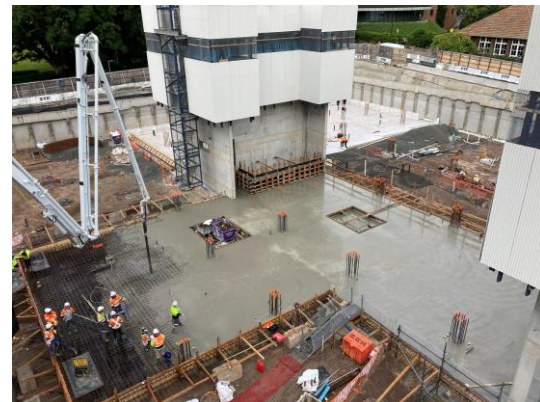


Image: first suspended slab pour on Level 1 in progress

CONSTRUCTION ENQUIRIES

For any questions about the works being undertaken, please contact us via email

E: sydneybiomedicalaccelerator@richardcrookes.com.au

We appreciate your cooperation and patience as we work to bring you this exciting new facility.