

SYDNEY BIOMEDICAL ACCELERATOR FORTNIGHTLY CONSTRUCTION UPDATE

ISSUE 23
12 JUNE 2026

CONSTRUCTION UPDATE

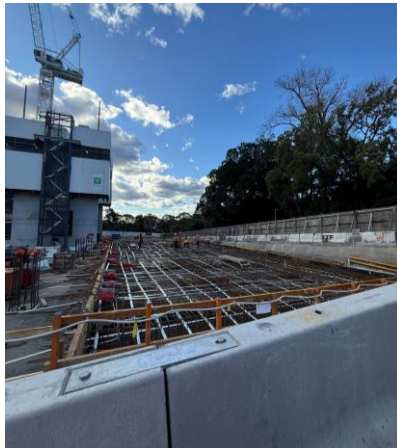
Work across the project site focused on structural concrete works, core construction, stormwater and drainage installation, waterproofing, reinforcement installation and excavation activities, supporting ongoing progression of Level 1–2 structural elements and underground services. Key milestones included completion of the Core 2 jump pour and associated preparation and closure works, multiple structural column and stair pours across Levels 1 and 2, completion of blinding works in selected areas, and concrete placement to the upper section of the main culvert structure. Reinforcement and formwork activities continued across Level 1 and Level 2 structures, supporting ongoing structural progression and preparation for upcoming pours. The façade Visual Mock-Up (VMU) was inspected in the off-site fabrication yard, marking a key milestone in preparation for façade installation which is expected to commence within the next six months.

Stormwater, drainage and civil works progressed across the central area of the site, including installation of underground drainage services and associated backfilling. Dewatering continued in low-lying areas due to persistent groundwater, which affected site access at times. Underground drainage system works are ongoing, but wet ground conditions are affecting how and when the work can be carried out.

Excavation and material handling continued across central and southern areas of the site, including removal of excavated material and preparation of future work areas. Wet and unstable ground conditions continued to impact access routes, with works re-sequenced as required to maintain safe movement of plant and personnel across active work zones.

Works at the interface with the Susan Wakil Health Building (SWHB) included façade investigations, installation of Level 1 hoarding, and temporary protection measures to manage interface risks. Additional noise and vibration monitoring equipment has been installed in preparation for upcoming connection works. Following the conclusion of the exam and teaching period, protection works to Levels 2–4 will commence.

Weather conditions had a material impact, with heavy rain and high winds affecting crane operations, deliveries, concrete pours and excavation activities. These conditions resulted in delays to reinforcement deliveries, plant movements, and planned pours across multiple areas, with works sequenced to maintain access, manage ground conditions and prioritise safe working zones.



Images: reinforcement and formwork activities across Level 1 and Level 2

Image: temporary hoarding in Level 1 SWHB

WHAT'S UPCOMING

*weather and permits dependent

ACTIVITY	START	FINISH (APPROX)*
Substructure (B1 and Level 1, and structure adjacent to SWHB)	August 2025	Late August 2026
Core Walls / Jumpforms	October 2025	Mid December 2026
Structure (L2 and above)	May 2026	Mid April 2027
Post-Tensioning	June 2026	March 2027
External Works & Landscaping	August 2026	January 2028
Internal Finishes & Services	October 2026	December 2027
Building Envelope (roofing and façade finishes)	October 2026	August 2027

SUBSTRUCTURE

- Drainage layers and blinding slabs in B1 Pour 2 & 3 areas
- Ongoing stormwater culvert works
- Isolation/make safe of services at SWHB interface commencing late June
- Demolition works at SWHB interface commencing early July
- Installation of Level 2–4 protective hoardings to SWHB commencing 22 June through to mid-July

CORE WALLS / JUMPFORMS

- Core 1 — L04 FRP Core Walls, followed by L05 FRP Core Walls
- Core 2 — L04 FRP Core Walls, followed by L05 FRP Core Walls
- Core 3 — L04 FRP Core Walls, followed by L05 FRP Core Walls

STRUCTURE (L2 AND ABOVE)

- Suspended slab and beam pours at Level 2 progressing across multiple zones, with works continuing through June / July
- Column and pilecap works at Core 1 completing
- Sucker truck investigation works in future RPA Link Bridge works zone (Lambie Dew Drive)

POST-TENSIONING

- Stressing, curing and grouting of Level 1 completing early June
- Stressing, curing and grouting progressing across Level 2, with multiple pours sequenced through June and into early July

EXTERNAL WORKS

- Installation of communications / ICT pits and containment runs adjacent SBA/RPA Hospital boundary. Works involve demolition of existing pits, installation of new pits, trenching and installation of conduit pathways.



Image: Ongoing stormwater culvert works



Image: Suspended slab pours at Level 2 between Core 2 and 3

CONSTRUCTION ENQUIRIES

For any questions about the works being undertaken, please contact us via email

E: sydneybiomedicalaccelerator@richardcrookes.com.au

We appreciate your cooperation and patience as we work to bring you this exciting new facility.