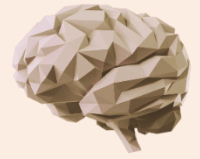


Monday 20th October

Lecture Theatre 208, Veterinary Science Conference Centre

11:30am – 12:30pm	<b>Lunch and Poster Viewing: Vote for Best Posters</b>
12:30pm – 12:40pm	Symposium opening <b>Professor Ian Hickie</b> Co-Director, Brain and Mind Centre, University of Sydney
12:40pm – 12:50pm	Welcome to Country <b>Aunty Binowee Bayles</b> Metropolitan Local Aboriginal Land Council
12:50pm – 1:10pm	Keynote <b>Professor Toby Walsh</b> Laureate Fellow and Scientia Professor of AI, University of New South Wales
<b>Session 1</b>	<b>Partnering for Good</b> <b>Chaired by Ms Clare Hughes</b>
1:10pm – 1:35pm	<b>Scaling Impact Through Philanthropy</b> Moderator: <b>Ms Emily Hickman</b> , Deputy Director Development, Brain and Mind Centre, University of Sydney  <b>Mr Roly Clifton-Bligh</b> Head of TDM Foundation, TDM Growth Partners  <b>A/Prof Eleanor Drummond</b> Associate Professor of Neuroscience and Bluesand Principal Research Fellow, School of Medical Sciences; Alzheimer's and Neurodegeneration Team, Brain and Mind Centre, University of Sydney
1:35pm – 2:00pm	<b>Research Partnerships Driving System Change</b>  <b>Professor Lauren Brookman-Frazer</b> Professor of Psychiatry at the University of California, San Diego, Associate Director of the Child and Adolescent Services Research Centre, and Research Director at the Autism Discovery Institute at Rady Children's Hospital San Diego  <b>Professor Adam Guastella</b> Michael Crouch Chair in Child and Youth Mental Health, Sydney Children's Hospital Westmead and Brain and Mind Centre, University of Sydney
2:00pm – 2:25pm	<b>Accelerating Discovery: Research x Biotech</b>  <b>Dr William Jorgensen</b> Director of Medicinal Chemistry, Xylo Bio  <b>Dr Nicolas Everett</b> NHMRC Emerging Leadership Fellow; School of Psychology, Group Leader, Translational Psychopharmacology Team, Brain and Mind Centre, University of Sydney



Monday 20th October

Lecture Theatre 208, Veterinary Science Conference Centre

2:25pm – 2:55pm	<b>Afternoon tea: Final opportunity to vote for Best Posters</b>
<b>Session 2</b>	<b>Panel Discussion</b> <b>AI Systems, Human Impacts: Transforming Research, Healthcare, and Society</b>
2:55pm – 3:55pm	Moderator: <b>Dr Pat Norman</b> , Research and Development, Sydney Executive Plus, The University of Sydney Business School  <b>Panel</b> <b>Professor Toby Walsh</b> , Laureate Fellow and Scientia Professor of AI, UNSW <b>Professor Michael Barnett</b> , Consultant Neurologist, RPAH; Co-Director, MS Research Australia Brain Bank; Co-Lead, BMC Computational Neuroimaging, Brain and Mind Centre <b>Dr Kimberlee Weatherall</b> , Professor of Law, University of Sydney; Chief Investigator, ARC Centre of Excellence for Automated Decision-Making and Society Q&A
<b>Session 3</b>	<b>Brain and Mind Centre EMCR Research Highlights</b> <b>Chaired by Dr Ann-Sofie Bjerre</b>
3:55pm – 4:10pm	<i>Clinical and genetic correlates of circadian depression in the Australian Genetics of Depression Study</i> <b>Dr Emiliana Tonini</b> Postdoctoral Research Fellow, Translational Research Collective, Youth Mental Health and Technology Team, Brain and Mind Centre, University of Sydney
4:10pm – 4:25pm	<i>Monitor and modulate the pathological aggregation of protein condensates</i> <b>Dr Yi Shen</b> DECRA Fellow, Senior Lecturer, School of Chemical and Biomolecular Engineering, University of Sydney
4:25pm – 4:40pm	<i>What happens to brain-body communication in dementia? Insights into allostatic-interoception through multimodal neuroimaging.</i> <b>Dr Jessica Hazelton</b> Postdoctoral Research Fellow, FRONTIER Frontotemporal Dementia Research Group, School of Medical Sciences, Brain and Mind Centre, University of Sydney
<b>Session 4</b>	<b>Symposium Closing and Poster Award Presentation</b> <b>Chaired by Professor Ian Hickie</b>
4:40pm – 4:50pm	Poster Awards <b>Professor Ian Hickie</b> Co-Director, Brain and Mind Centre, University of Sydney
4:50pm – 5:00pm	Closing remarks <b>Professor Emeritus Kathryn Refshauge</b> Co-Director, Brain and Mind Centre, University of Sydney
5:00pm – 6:00pm	<b>Networking</b>