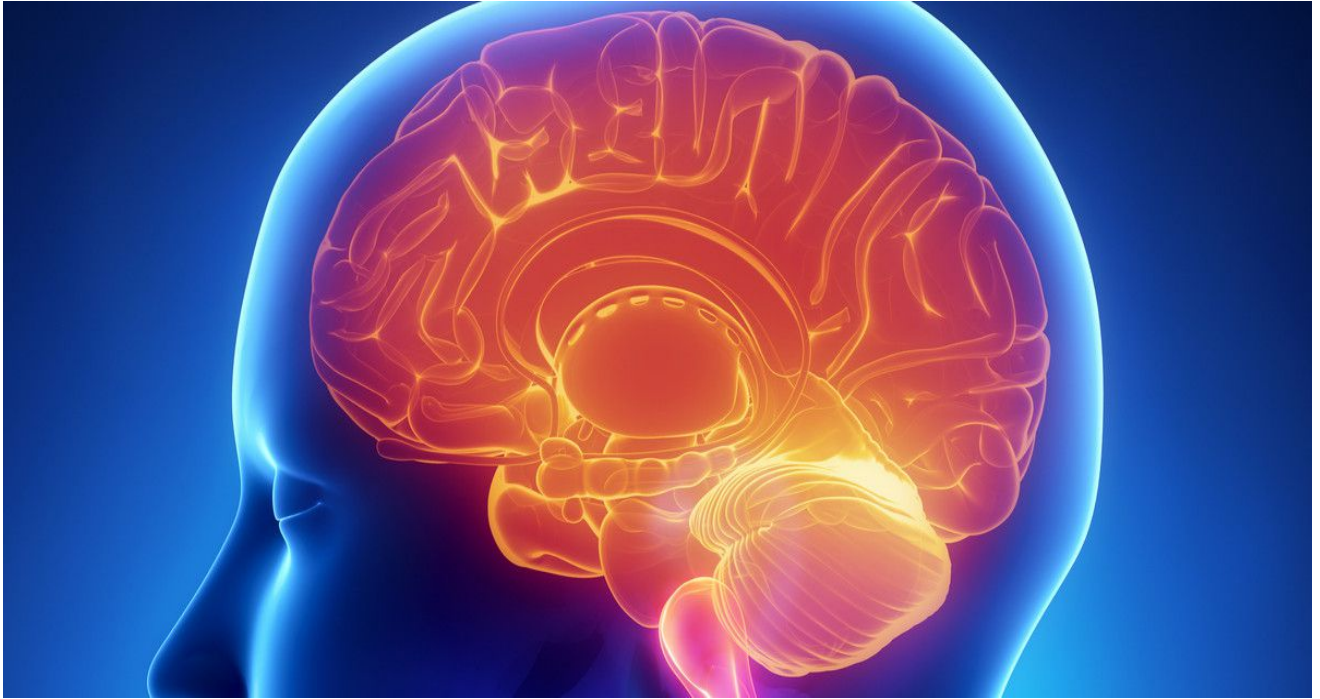




THE UNIVERSITY OF  
SYDNEY

# IMAGING THE HUMAN BRAIN

## in health & disease



### Where

Building K, Level 4  
94-100 Mallett Street  
Camperdown, 2050  
NSW

### Contact Information

**Associate Professor Kay Double**

Work: 02 9114 4292

[kay.double@sydney.edu.au](mailto:kay.double@sydney.edu.au)

**Karl Aoun**

Work: 02 911 442 41

Mobile: 04 522 666 72

[kaou6412@uni.sydney.edu.au](mailto:kaou6412@uni.sydney.edu.au)

### SEEKING VOLUNTEERS FOR RESEARCH ON THE BRAIN

Researchers at The University of Sydney are seeking volunteers aged between **50–70 years who are generally healthy** to help them investigate how the brain controls how we move, for example, getting up from a chair or picking up a light object.

The study will help understand how the brain changes as we get older and how we can keep the brain healthy in later life. Note that the study does not involve any strenuous exercise.

Volunteers will have their movements assessed by a neurologist and neuroscientist, and have images of their brain collected using a safe and non-invasive ultrasound method, and potentially complete a magnetic resonance imaging (MRI) scan. The study involves 1 to 3 study appointments at Camperdown or Randwick (each appointment lasts 2 to 4 hours).

Volunteers will be reimbursed for associated parking or public transport costs and refreshments will be provided.

If you wish to be involved or would like further information, please contact the corresponding study coordinators.