

# Meeting the Human Halfway

A Symposium by the BioHumanity Research Theme

**Friday 31 May**

**10am-4.30pm**

**Lecture Theatre 203**

**RD Watt Building**

## Invited speakers

**Dr. Sophie Chao**

University of Sydney

**Dr. Tarsh Bates**

University of Western Australia

**Dr. Florence Chiew**

Macquarie University

**Dr. Jacqueline Dalziell**

University of New South Wales

## Discussants

**Ass/Prof Thom van Dooren**

University of Sydney

**Dr. Astrida Neimanis**

University of Sydney

**Dr. Dinesh Wadiwel**

University of Sydney

**Professor Danielle Celermajer**

University of Sydney

*All welcome but RSVP is essential because of catering and distribution of readings*

Please register here by May 24: <https://bit.ly/2H0pqdB>

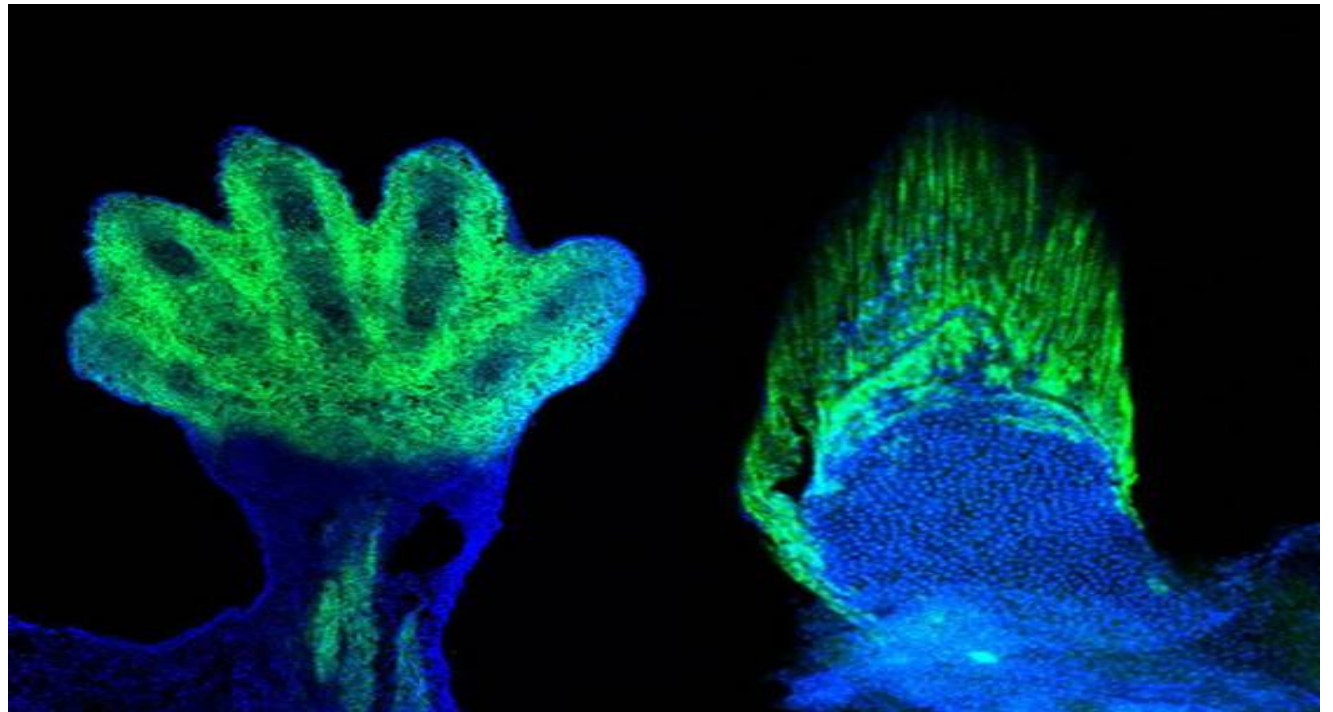


Image source: <https://nyti.ms/2IUqy4Q>

The “human,” “person,” or “self” has always been an unstable category in social theory, prone to multiple readings in the humanities and conflicting taxonomies in the sciences. This upcoming symposium brings together a range of social theorists to ask how the “human” has existed—as a concept, a framework, a method—and how we might deepen and recast our social theories of the human in the context of bioscientific innovations and multispecies entanglements. Pushed to their limit by abounding environmental crisis and emerging knowledge of our more-than-human worlds prevailing concepts of the human cannot hold. Disciplinary boundaries and methods for studying the human need to be reworked.

This symposium will showcase papers from four early career researchers who chart creative social theories of the human amid more-than-human worlds. Speakers will explore the interdependencies that emerge from more-than-human entanglements: for **Sophie Chao**, capitalist natures of palm oil and their impact on personhood among Marind communities in West Papua, and for **Tarsh Bates**, the relationship between humans and *Candida albicans* as a queer ecology. Others position more-than-human worlds as a provocation to turn back to disciplinary genealogies. To cast new lines for thinking through the role of sociology in current debates about nature and life **Florence Chiew** returns to the origins of sociology through Auguste Comte. And **Jacqueline Dalziell** interrogates the psychoanalytic underpinnings of Australian feminist theory, rereading Freud’s distinction between the hysterical and anatomical body to deepen feminist engagements with biology.

In response, four established scholars in this field will provide lively engagement as discussants.