



**Contact us**  
1800 SYD UNI (1800 793 864)  
+61 2 8627 1444 (outside Australia)  
[sydney.edu.au/ask](mailto:sydney.edu.au/ask)

# Postgraduate guide 2020

Economics, Social and Political  
Sciences, Social Work



We acknowledge the tradition of custodianship and law of the Country on which the University of Sydney campuses stand. We pay our respects to those who have cared and continue to care for Country.



Forest Stewardship Council (FSC®) is a globally recognised certification overseeing all fibre sourcing standards. This provides guarantees for the consumer that products are made of woodchips from well-managed forests and other controlled sources with strict environmental, economical and social standards.



THE UNIVERSITY OF  
SYDNEY

#### Contact us

1800 SYD UNI (1800 793 864)  
+61 2 8627 1444 (outside Australia)  
sydney.edu.au/ask

# Postgraduate guide 2020

## Economics, Social and Political Sciences, Social Work

### Join us

Where will postgraduate study take you? .....	3
Why study with us? .....	4
Fast-track your master's degree .....	8

### Cross-disciplinary

Executive Master of Arts and Social Sciences .....	10
--	----

### Economics

Master of Economics .....	12
Dual degree: Master of Economics (Fudan University) .....	14
Master of Economic Analysis .....	15

### Social and Political Sciences

Master of Development Studies .....	16
Master of Human Rights .....	18
Master of International Relations .....	20
Master of International Security .....	22
Master of Peace and Conflict Studies .....	24
Master of Political Economy .....	25
Master of Public Policy .....	26

### Social Work and Policy Studies

Master of Social Work .....	28
Master of Social Work (Qualifying) .....	29
Graduate Certificate in Human and Community Services .....	30

### Research

Research at Sydney .....	31
Master of Arts (Research) .....	32
Doctor of Arts .....	33
Doctor of Social Sciences .....	33
Master of Philosophy .....	34
Doctor of Philosophy (Arts and Social Sciences) .....	36

### Further information

Fees and costs .....	38
How to apply .....	39
CRICOS codes .....	40
Important dates .....	41









## Where will postgraduate study take you?

If your passion lies in making a difference, you will need to acquire a diverse set of skills for a rapidly changing world. Our master's degrees provide you with specialist knowledge and an advanced understanding of the key challenges and opportunities contemporary societies face.

At the University of Sydney, you will have the opportunity to broaden and deepen your skills for practical application in your current career or to carve out a new career path. Our postgraduate coursework degrees enable you to sharpen your focus, enhance your adaptability and agility, and advance your prospects in your chosen field.

Ranked 23rd in the world for studies in the arts and humanities,\* the Faculty of Arts and Social Sciences comprises multiple schools including Economics, Social and Political Sciences, and Education and Social Work. You will be taught by academics who are dedicated experts in their fields.

By undertaking a postgraduate degree in the social and political sciences, such as a Master of Political Economy, Master of Peace and Conflict Studies or Master of International Security, you will position yourself at the forefront of the most pressing political, economic and social issues of our time.

In this 'post-truth' era of political instability and social injustice, degrees such as the Master of International Relations, Master of Social Work and Master of Human Rights have never been more relevant.

Our Master of Economics and Master of Economic Analysis degrees have become an important training ground for economists in the region. Our graduates work in senior positions in Treasury, the Reserve Bank of Australia and other policy sectors across Commonwealth and state governments, as well as international agencies, companies and financial markets and institutions.

Our master's degrees are flexible, allowing both full-time and part-time study (the latter for domestic students only), and graduate diploma and graduate certificate options. This means you can update your skills to the level you require and with the time commitment that best suits you. If you'd like to take your postgraduate studies even further, you can choose a higher degree by research, such as a PhD or Doctor of Social Sciences.

Additionally, our master's degrees offer opportunities for international exchange, internships and work placements while you study.

Whatever your choice, you can be sure that a postgraduate course in the Faculty of Arts and Social Sciences at the University of Sydney will open up a new world of ideas and possibilities for you.

\* QS World University Rankings by Subject 2019

# Why study with us?

Whether you want to gain a professional qualification, change career direction or pursue a personal ambition, the University of Sydney will steer you to places you never imagined.

Our coursework and research degrees offer far more than knowledge. You'll join leading thinkers to challenge the known and explore the unknown in a stimulating environment that encourages both learning and networking.

To support research and teaching excellence, we are continually investing in the latest technology and exceptional facilities.

The University's people are its greatest resource. Across many disciplines, we give you access to leading lecturers, research supervisors, industry networks, research and teaching centre staff from Australia and worldwide.

Our graduates are among the world's most highly sought after employees – we're ranked first in Australia and fourth in the world for graduate employability.\* Our outstanding reputation is reflected in our regular ranking in the top 50 universities worldwide.\*\*

– [sydney.edu.au/world-rankings](https://sydney.edu.au/world-rankings)



## Postgraduate study in arts and social sciences

Our faculty encompasses many diverse areas, including:

- Economics
- Languages and cultures
- Literature, art and media
- Philosophical and historical inquiry
- Social and political sciences
- Education
- Social work
- Visual arts.

We cover the breadth and depth of the arts and social sciences across more than 40 coursework master's programs.

Whether you are pursuing career advancement through professional development or simply enriching your understanding of the world, we offer you a world-class environment for learning. We aim to enlighten and inspire, and take pride in providing the high quality education you need to reach your next goal.

For details of all our postgraduate courses, visit our website:

– [sydney.edu.au/pg-arts-ss](https://sydney.edu.au/pg-arts-ss)

\* QS Graduate Employability Rankings 2020  
\*\* QS World University Rankings 2020

## Postgraduate coursework options

### Master's degrees

These are ideal if you need specialised knowledge and skills, and want to:

- take the next step in your career
- gain professional qualifications for your next job
- upskill for your current role
- develop academic expertise in your chosen field
- expand your horizons.

A master's degree typically requires between one and two years of full-time study. If you cannot commit to full-time study due to other commitments, we also offer the flexibility of part-time study for domestic students.

Find out more about your course at:

- [sydney.edu.au/courses](https://sydney.edu.au/courses)

### Graduate diplomas and graduate certificates

These are usually based on master's degrees and offer a subset of the master's units of study. They are a good alternative if you want to try out postgraduate study or increase the breadth of your expertise and knowledge, or if you don't quite meet the entry requirements for a master's degree.

Once you finish a graduate certificate (usually six months of full-time study), you may then be able to progress to the equivalent graduate diploma (usually one year of full-time study) or a master's degree. See the progression diagram below as a guide, and please note that progression requirements can vary.

A graduate certificate or graduate diploma is also an excellent option if you don't want to commit to a master's degree but still need a solid grounding in your chosen field.

### Short courses

If you are not sure about studying a full degree or are interested in professional development, you may wish to take a single unit of study as a 'non-award' course.\*

We offer hundreds of units of study across selected faculties, including many you can use to earn continuing professional development points or to explore areas of general interest.

You will receive an official academic transcript at the end of your studies, and may be able to use it to request credit for a longer course, such as a master's degree.

- [sydney.edu.au/study/short-courses](https://sydney.edu.au/study/short-courses)

\* Note: international students are not eligible for a student visa for a short course. Only degrees that are CRICOS-registered are available to student visa holders for full-time study on shore. Check the details for individual courses at [sydney.edu.au/courses](https://sydney.edu.au/courses)

**Graduate certificate**  
Complete some of the essential units of study towards a master's degree.  
*Usually six months of full-time study.*

**Graduate diploma**  
Complete more units of study that you can count towards a master's degree.  
*Usually one year of full-time study.*

### Master's degree

Gain specialised skills and knowledge or professional qualifications.  
*Usually one to two years of full-time study.*





The new Social Sciences Building

## Facilities

### Building our future

The Faculty of Arts and Social Sciences has opened a landmark new building on the Camperdown Campus. The multipurpose Social Sciences Building draws on the latest technologies and design principles for 21st century interactive teaching, learning and research.

The new building better accommodates our teaching and research, with additional space for higher degree by research students, visiting academics, regular events and workshops.

The School of Economics and School of Social and Political Sciences are based in this building. It is also home to the Sydney Social Sciences and Humanities Advanced Research Centre, which turns great ideas into landmark outcomes for both theory and practice.

In 2020, we will see the opening of another landmark building on campus, the Chau Chak Wing Museum. It will include the collections of the Macleay Museum, Nicholson Museum and University Art Gallery, as well as other cultural highlights from the University's significant and historic collections.

The Chau Chak Wing Museum will provide state-of-the-art facilities for the collections to be used for research, community engagement and education at the University.

### The Quarter

This is a dedicated and exclusive space for postgraduate coursework students, located in the Badham Building on Science Road.

Our goal is to create a holistic student experience and develop a vibrant community that supports the teaching, learning and wellbeing of postgraduate coursework students – your 'home away from home', as well as an online community to help you anywhere, any time.

Our Postgraduate Learning Adviser team comprises current postgraduate students who can assist you to make the best use of everything the University provides, including:

- library resources and services
- connecting with experts
- peer advice and support
- technology
- eLearning
- finding the best coffee on campus!

The library offers a diverse program of events developed with our partners and guests, including workshops, seminars and drop-in 'clinics'.

We focus on supporting the University's education and research agenda in creative and imaginative ways. We assist postgraduate coursework students to extend their networks beyond their disciplines and develop a range of skills for both study and professional life.



## Global opportunities

We'll connect you to the world through our exchange programs, helping you gain real-world experience to enhance your career prospects and build your networks.

### Exchange programs

The University has close to 300 exchange partners in 42 countries. All can broaden your horizons and immerse you in different cultures and environments. More than 100 of our partners are listed among the top 200 universities in the world.\*

If you are eligible to become an exchange student,\*\* you will remain enrolled full time at the University of Sydney while you are overseas and continue to pay your usual tuition fees.

– [sydney.edu.au/arts/international](https://sydney.edu.au/arts/international)

## Links to industry

Along with the lifelong skills in research, communication and critical thinking that employers value highly, our courses give you the practical skills, experience and networking opportunities you need to secure a position in your field of choice.

For example, for the past six years, the faculty has collaborated with the Sydney Writers' Festival, giving students the opportunity to participate in public debate, disseminate research, and pursue fundamental questions.

Many of our postgraduate degree programs offer internships: these allow you to put into practice what you have learned, while gaining useful experience to improve your prospects when you graduate.

## Career services

The University of Sydney's Careers Centre is an important resource for personalised career and resume advice. Services on offer for postgraduate students include:

- detailed information on career options with a postgraduate research or coursework qualification
- information and resources to assist with writing a PhD thesis
- workshops and web-based resources to build and extend the skills needed for study and research at university.

Find out more at:

– [sydney.edu.au/careers](https://sydney.edu.au/careers)

\* Times Higher Education World University Rankings 2018-19

\*\* Postgraduate students can go on exchange if their course does not have specific accreditation requirements that need to be completed here in Sydney.



# Fast-track your master's degree

If you have completed previous studies in a related area or have relevant work experience, you can fast-track our master's degrees.

This is called recognition of prior learning, and means you won't have to repeat similar units of study and could graduate sooner. See the diagram below or our website:

– [sydney.edu.au/study/credit](https://sydney.edu.au/study/credit)

If you cannot gain direct entry to the master's degree of your choice, the equivalent graduate diploma and graduate certificate (when available) offer alternative entry points.

If you are not able to complete the master's degree due to other commitments, you may be able to graduate with one of these qualifications instead.

For qualifications outside Australia or where grading systems differ, the University determines equivalencies based on the country, institution and qualifications, assessed as equivalent to the Australian Qualifications Framework level.

The admission scores in this guide are based on our grading system.

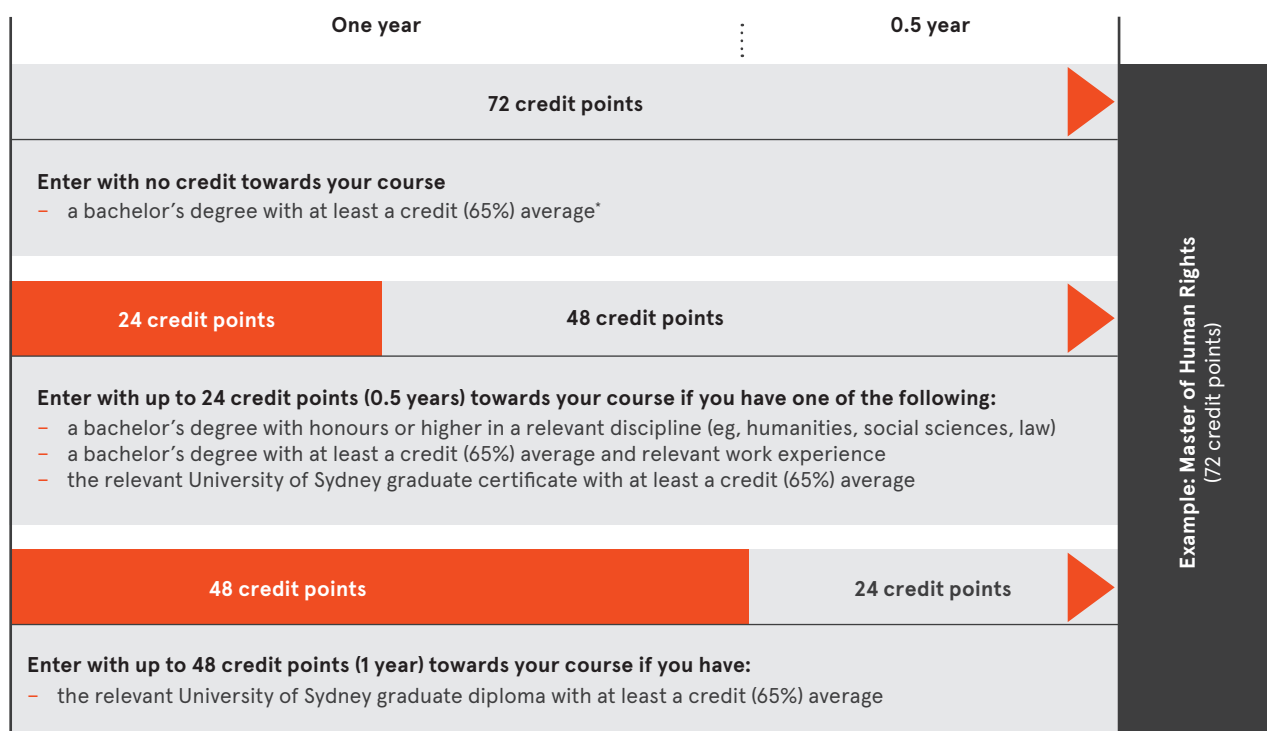
– [sydney.edu.au/students/guide-to-grades](https://sydney.edu.au/students/guide-to-grades)

Qualifications completed more than 10 years ago will not be accepted.

This is only a guide to recognition of prior learning. All recognition granted is subject to faculty assessment and approval.

## Example for a one-and-a-half-year master's degree (72 credit points)

Applicable courses include the Master of Economic Analysis; Master of Development Studies; Master of Peace and Conflict Studies; Master of Political Economy; and Master of Human Rights.\*



\* Some courses require a bachelor's degree in a relevant discipline or higher admission criteria





### Example for a two-year master's degree (96 credit points)

Applicable courses include the Executive Master of Arts and Social Sciences\*; Master of Economics; Master of International Relations; Master of International Security; and Master of Public Policy.

One year	...	One year
96 credit points		
<b>Enter with no credit towards your course</b> <ul style="list-style-type: none"> <li>a bachelor's degree in an unrelated discipline with at least a credit (65%) average</li> </ul>		
24 credit points	72 credit points	
<b>Enter with up to 24 credit points (0.5 years) towards your course if you have one of the following:</b> <ul style="list-style-type: none"> <li>a bachelor's degree in a relevant discipline (eg, humanities, social sciences, law) with at least a credit (65%) average</li> <li>a bachelor's degree with at least a credit (65%) average and relevant work experience</li> <li>the relevant University of Sydney graduate certificate with at least a credit (65%) average</li> </ul>		
48 credit points	48 credit points	
<b>Enter with up to 48 credit points (1 year) towards your course if you have one of the following:</b> <ul style="list-style-type: none"> <li>a bachelor's degree with honours or higher in a relevant discipline (eg, humanities, social sciences, law)</li> <li>a bachelor's degree in a relevant discipline (eg, humanities, social sciences, law), with at least a credit (65%) average and relevant work experience</li> <li>the relevant University of Sydney graduate diploma with at least a credit (65%) average</li> </ul>		

Example: Master of International Relations  
(96 credit points)

Fast-track your master's degree

\* This course has specific admission criteria; see [sydney.edu.au/courses/executive-master-of-arts-and-social-sciences](https://sydney.edu.au/courses/executive-master-of-arts-and-social-sciences)

# Executive Master of Arts and Social Sciences

This innovative master's degree is designed for those who have significant professional experience, aspire to leadership roles, and would like to combine their professional aspirations with an interest in the arts and social sciences. The program has a strong emphasis on public policy analysis, cultural awareness and sensitivity, ethical reasoning and critical analysis, and will equip you with a highly transferable and flexible skill set.

## Why study with us?

We offer one of the world's only cross-disciplinary executive leadership master's qualifications in arts and social sciences.

You have the opportunity to tailor your course by combining our comprehensive arts and social sciences curriculum with specialised coursework in other disciplines and faculties.

## Careers and opportunities

The Executive Master of Arts and Social Sciences enables leadership opportunities in the private, public and not-for-profit sectors, including government departments and other policymaking institutions, locally and globally.

Typical roles include designing and implementing policy, managing communication and legal strategy, leading the restructure of an organisation and redefining its culture.

Graduates are uniquely positioned to contribute sensitive, broad-minded leadership to any strategic decision-making role.

## Course structure

96 credit points (cp), comprising:

- 3 core units (18 cp)
- 12 electives (72 cp) selected from units taught in the Faculty of Arts and Social Sciences, Faculty of Science, Sydney Law School and the Faculty of Engineering
- 1 capstone experience (6 cp)

## Duration

- 2 years full time
- up to 6 years part time (domestic students only)

## Commencing semesters

- Semester 1 (February)
- Semester 2 (August)

## More information

For full course information and specific admission criteria, visit:

- [sydney.edu.au/courses/executive-master-of-arts-and-social-sciences](https://sydney.edu.au/courses/executive-master-of-arts-and-social-sciences)





## Inside view

---

### **Sian Hutchinson**

Executive Master of Arts and Social Sciences  
Principal Policy Officer,  
Department of Premier and Cabinet (NSW)

“After completing undergraduate degrees in Law and International Relations, I am working towards the Executive Master of Arts and Social Sciences. It’s allowing me to develop my academic skills and putting me back into a theoretical headspace, but across multidisciplinary subject areas.

“I have enjoyed applying some new theories and skills to the major group project in my crisis communications course. I have always worked in high-pressure policy areas and this project has helped me develop new and different skills.

“My career has focused on ‘wicked’ public policy issues. After graduating, I worked at the Department of Foreign Affairs and Trade, then moved into the role of Director of Community Engagement for the Royal Commission into Institutional Responses to Child Sexual Abuse. My current role is in the complex area of countering violent extremism for the NSW Department of Premier and Cabinet.

“While my legal training has been useful in all of my roles, my master’s degree is pushing me to improve my academic writing and research skills, which will also be useful in my career. I don’t know of any other master’s-level program in Australia that allows you the opportunity to tailor your studies in such a multidisciplinary way.”



Executive Master of Arts and Social Sciences



# Master of Economics

This degree provides you with the training and knowledge for a wide range of careers and focuses on advanced coursework in economics and data analysis – critical skills in today's workforce. Designed to be relevant to new graduates as well as professionals seeking further training in economics for career progression or a career change, the Master of Economics encourages you to apply your training in practical ways to address major challenges in business and policy.

## Why study with us?

The Master of Economics at Sydney is the preferred professional development qualification for many employers.

With its combination of industry-relevant training and academic rigour, the course is a benchmark for postgraduate economics training in Australia.

We offer evening classes to accommodate part-time students and professionals.

## Careers and opportunities

The Master of Economics prepares you for a career based on the key skills of economics, econometrics and finance. Our graduates hold positions in international, federal and state policy departments, global financial institutions, non-government organisations and intergovernmental agencies such as the Organisation for Economic Co-operation and Development (OECD).

## Course structure

96 credit points (cp), comprising:

- 4 foundation units (24 cp):
  - Microeconomic Theory
  - Macroeconomic Theory
  - Principles of Econometrics
  - Quantitative Tools for Economics
- 4 core units (24 cp):
  - Microeconomics Analysis 1
  - Macroeconomics Analysis 1
  - Econometric Applications
  - Communication in Economics
- 7 electives (42 cp), including at least one specialisation
- 1 capstone experience (6 cp)

## Duration

- 2 years full time
- up to 6 years part time (domestic students only)

A reduction in the volume of learning of up to 24 cp (representing the foundation units) may be available if you have completed an undergraduate degree with a major in economics.

## Commencing semesters

- Semester 1 (February)
- Semester 2 (August)

## Other study options

- Graduate Diploma in Economics (48 cp)
- Graduate Certificate in Economics (24 cp)

## More information

For full course information and specific admission criteria, visit:

- [sydney.edu.au/courses/master-of-economics](https://sydney.edu.au/courses/master-of-economics)



## Inside view

---

### **Robert Montgomery**

Master of Economics  
Chief Economist and Head of Policy,  
Infrastructure Partnerships Australia

“After completing a Bachelor of International Studies, I undertook several internships to develop my interest in economics and public policy. I chose to study economics to improve my understanding of what drives change within society and to develop a hard skill such as economic analysis.

“After graduating, I secured a role as an analyst at the Northern Territory Power and Water Corporation in Darwin based on my economics qualifications. Following a position as strategy consultant at Step Change, a boutique strategy consulting firm, I am now Chief Economist and Head of Policy at Infrastructure Partnerships Australia, and manage an interdisciplinary team of economists, engineers, anthropologists, lawyers and government relations experts.

“My postgraduate qualifications have added credibility to the work I produce and the positions for which I advocate, and strong training in economics has provided me with a problem-solving toolkit that allows me to understand complex issues quickly. I recommend the Master of Economics to help develop critical thinking and problem-solving skills, which are useful in any sector and in almost any role.”



Master of Economics

# Dual degree: Master of Economics (Fudan University)

Graduate with two master's degrees from two prestigious international universities. Designed for students who wish to engage in international business partnerships with China and take advantage of growing business opportunities in the region, this dual degree equips you with advanced analytical and quantitative skills in economics.

## Why study with us?

The Sydney–Fudan dual degree is a unique program that offers you the opportunity to study at two leading universities in two vibrant international cities.\*

First, you will study at the University of Sydney, where you will undertake rigorous academic training in economic principles, data analysis, and communication in economics.

You will then study at Fudan University in Shanghai, where you will complete English-taught elective units on China's economy, financial system, and national policies. You will also complete a master's thesis.

Upon completion, you will be awarded a Master of Economics from the University of Sydney and a Master in World Economy (Globalisation and Chinese Economy) from Fudan University.

## Careers and opportunities

The Sydney–Fudan dual degree program is ideal for anyone with an undergraduate major in economics who wishes to grasp the growing business opportunities in China or engage in an international business partnership with China.

## Course structure

Our Master of Economics (CRICOS 083950M) requires the completion of 96 credit points (cp). This dual degree pathway is only available to applicants with a major in economics, econometrics or financial economics, based on which a reduction in the volume of learning of 24 cp will be applied, representing the four core units in the Master of Economics. For this dual degree, you therefore need to complete 72 cp as follows:

- 8 units (48 cp) at the University of Sydney, comprising:
  - 4 core units (24 cp):
    - Microeconomic Analysis 1
    - Macroeconomic Analysis 1
    - Econometric Applications
    - Communication in Economics
  - 4 elective units (24 cp) including at least one specialisation.

24 cp will be credited to your Sydney degree on the completion of one year of full-time study at Fudan University, comprising:

- 4 compulsory units:
  - Chinese Economy
  - China's Taxation System and Fiscal Policy
  - Doing Business in China
  - Basic Chinese
- 2 elective units
- 1 master's thesis

## Duration

- Total duration for the dual degree is 2 years full time (1 year in Sydney and 1 year in Fudan)
- The University of Sydney Master of Economics is two years full time. This will be reduced by 1 semester (or 24 cp) based on your undergraduate major in economics.
- A further 1 semester (or 24 cp) will be applied as credit upon completion of the Fudan degree.
- The Fudan University Master in World Economy (Globalisation and Chinese Economy) requires 1 year of full-time study.

## Commencing semesters

Study in Sydney begins in February (Semester 1) or August (Semester 2). Study at Fudan begins in September. If you complete your studies in Sydney at the end of Semester 2, you will have a study gap until the following September. International student visa holders may not be able to remain in Australia during this period and will need to check with the Department of Home Affairs about their visa status.

For full information on the dual degree, including admission criteria and tuition fees, visit:

- [sydney.edu.au/courses/master-economics-fudan](https://sydney.edu.au/courses/master-economics-fudan)

\* Due to Ministry of Education of P.R. China regulations, this dual degree is not available for Chinese citizens.



# Master of Economic Analysis

Designed for students who already have a strong background in economics, this degree provides the skills to become a professional economist or economic analyst in the public or private sector. It is built around a core of advanced training in economic theory and econometrics, with electives in a wide range of economic applications.

## Why study with us?

You will receive advanced training in economics and a pathway to higher degree study. With innovative instruction in cutting-edge economic theory and applications, the Master of Economic Analysis is a challenging graduate program in economics for highly focused students. You will learn to analyse real-world issues from public policy to financial markets and economic development.

We have a long tradition of excellence and dynamic research activities in all fields of economics. You will learn methods of economic modelling, the art and science of working with data using sophisticated tools, and how to use these tools to produce independent research.

## Careers and opportunities

This degree will prepare you for work as an economist with major national and international organisations such as the Reserve Bank of Australia, and corporations such as the major global banks and consultancies.

It is also suitable if you are seeking a path to a PhD in economics, as it prepares you for admission to PhD programs in Australia and overseas.



## Course structure

72 credit points (cp), comprising:

- 4 core units (24 cp):
  - Microeconomics Analysis 1
  - Macroeconomics Analysis 1
  - Mathematical Methods of Economic Analysis
  - Econometric Applications
- 4 core electives (24 cp)
- 2 electives (12 cp)
- 1 capstone experience – research dissertation (12 cp)

### Duration

- 18 months full time
- up to 6 years part time (domestic students only)

### Commencing semesters

- Semester 1 (February)
- Semester 2 (August)

### Other study options

- Graduate Diploma in Economic Analysis (48 cp)
- Graduate Certificate in Economic Analysis (24 cp)

### More information

For full course information and specific admission criteria, visit:

- [sydney.edu.au/courses/master-of-economic-analysis](https://sydney.edu.au/courses/master-of-economic-analysis)

# Master of Development Studies

Understand the challenges of sustainable human development on a local and global scale. This program provides theoretical foundations and opportunities for practice-based learning of development policy, programs and outcomes. Options include an internship at local or overseas organisations, field school, practice-based collaborative project unit and a supervised research dissertation.

## Why study with us?

Address issues in development policy and debate with experts in anthropology, international relations, political economy, human rights, peace and conflict studies, linguistics, public health, human geography, economics and sociology. Benefit from workshops, seminars and conferences in a research-driven environment, and from our strong commitment to building industry relationships in a global city.

## Careers and opportunities

The Master of Development Studies equips you for a career in areas of administration, project leadership, planning and policy, education and management relevant to development.

Our graduates work with governments and non-government organisations, including the United Nations, the World Bank, the Australian Council for International Development, Coffey International Development, Devex, GRM International, Oxfam, and World Wildlife Fund.

## Course structure

72 credit points (cp), comprising:

- 4 core units (24 cp):
  - Development: Civil Society and Wellbeing
  - Development: Communication and Education
  - Rethinking Poverty
  - Culture and Development: Key Concepts
- 1 core elective (6 cp)
- 5 electives (30 cp)
- 1 capstone experience (6 cp)

## Duration

- 18 months full time
- up to 6 years part time (domestic students only)

## Commencing semesters

- Semester 1 (February)
- Semester 2 (August)

## Other study options

- Graduate Diploma in Development Studies (48 cp)
- Graduate Certificate in Development Studies (24 cp)

## More information

For full course information and specific admission criteria, visit:

- [sydney.edu.au/courses/master-of-development-studies](https://sydney.edu.au/courses/master-of-development-studies)



## Inside view

---

### **Adrian Enright**

Master of Development Studies  
Future Planet Program, Qantas

“I chose to study this program to help develop my theoretical understanding of how sustainable development in poorer countries can be facilitated most effectively.

“My internship at WWF-Australia gave me outstanding experience and industry links. This allowed me to pursue an area of particular interest, and draw on professional networks to write a small paper which benefited WWF and was submitted as part of my course.

“The internship also later led to me being offered a position with WWF as its Climate Change Policy Manager and later Carbon Finance Manager.”



# Master of Human Rights

Understand how human rights apply in various political, social, economic and environmental contexts. Acquire the skills to test academic knowledge in real situations and achieve change. Explore international and regional human rights systems along with sociology and social policy, political economy, philosophy and history.

## Why study with us?

This program combines social, scientific and legal approaches to the study of human rights and provides a holistic perspective on human rights and social change.

The program's point of difference is its uniquely interdisciplinary training in human rights.

You will consider policy and legal issues in the Asia-Pacific region and beyond, and address human rights violations at local, national, regional and global levels. You will undertake independent scholarly research on current human rights issues and participate in a vocational placement in an Australian or international human rights organisation.

## Careers and opportunities

The Master of Human Rights opens up career options within non-government agencies and the United Nations, and roles in international human rights and development agencies as well as federal and state government. Our graduates also find employment in print and visual media where a human rights specialisation is required. Some graduates go on to pursue research degrees and academic careers.



## Inside view

**Saskia van Otterloo**  
Master of Human Rights

“Partaking in the Glebe Social Justice Learning Lab program as part of my master’s degree gave me a deep understanding of the issues surrounding social injustice in my own city.

“Not only do I have academic understanding of the problems our society faces, I now have a practical, interdisciplinary understanding of social injustice in our society and, more specifically, housing injustice in Sydney.”



### Course structure

72 credit points (cp), comprising:

- 4 core units (24 cp):
  - Indigenous Rights – Global Issues
  - Human Rights: Norms and Mechanisms
  - Dynamics of Human Rights Violations
  - Human Rights Simulation
- 2 core electives (12 cp)
- 4 or 5 electives (24 or 30 cp)
- 1 capstone experience (6 or 12 cp for a dissertation or social justice placement)

### Specialisations

- Global Migrations
- International Relations
- Social Policy
- Social Research

### Duration

- 18 months full time
- up to 6 years part time (domestic students only)

### Commencing semesters

- Semester 1 (February)
- Semester 2 (August)

### Other study options

- Graduate Diploma in Human Rights (48 cp)
- Graduate Certificate in Human Rights (24 cp)

### More information

For full course information and specific admission criteria, visit:

- [sydney.edu.au/courses/master-of-human-rights](https://sydney.edu.au/courses/master-of-human-rights)

# Master of International Relations

Understand and address the world's most pressing challenges, including war and peace, social and economic justice, poverty, development and environmental sustainability. Investigate relations among states and non-state actors, including the evolution of the international system. Develop sophisticated critical thinking through this intellectually rigorous, research-intensive program.

## Why study with us?

The Department of Government and International Relations is one of the largest of its kind in Australia, with links to some of the major policy think tanks in Australia, such as the Australian Institute of International Affairs, and the Lowy Institute. We also house the Centre for International Security Studies and the Electoral Integrity Project.

Our academics are recognised experts in international relations theory, public policy, international political economy and security, Australian and comparative politics, migration, and North and Southeast Asian politics.

## Careers and opportunities

This degree equips you for a career in consulting, diplomacy, development, defence, government, immigration, intelligence, international business, journalism or risk management.

You may find a role in international organisations, including the United Nations or European Union, or in humanitarian, government and non-government organisations. The course also provides an opportunity for professionals in these sectors to gain advanced training to support career advancement.

## Course structure

96 credit points (cp), comprising:

- 5 core units (30 cp):
  - Forces of Change in International Relations
  - Foundations of International Relations
  - International Organisations
  - International Security
  - Globalisation and Governance
- 4 or 5 core electives (24 or 30 cp)
- 5 electives (30 cp)
- 1 capstone experience (6 cp or 12 cp for a dissertation)

### Specialisations

- Economics
- Foreign Language
- Global Migrations
- Human Rights
- International Law
- Peace and Conflict Studies
- Political Economy
- Social Research
- Sociology, Social Policy and Development
- US Studies

### Duration

- 2 years full time
- up to 6 years part time (domestic students only)

### Commencing semesters

- Semester 1 (February)
- Semester 2 (August)

### Other study options

- Graduate Diploma in International Relations (48 cp)
- Graduate Certificate in International Relations (24 cp)

### More information

For full course information and specific admission criteria, visit:

- [sydney.edu.au/courses/master-of-international-relations](https://sydney.edu.au/courses/master-of-international-relations)



## Inside view

---

### Ivan Pyatak

Master of International Relations  
Cyber Security Associate,  
DXC Technology

“My biggest passion is international politics. The idea of working in the diplomatic service or in academia, helping resolve issues of global significance and contributing to international peace and prosperity really fascinates me.

“I was lucky enough to receive a postgraduate scholarship at the University of Sydney and I undertook some of the degree at Sciences Po in Paris as part of an exchange program. My research dissertation explored regional integration arrangements among authoritarian regimes and their impact on state sovereignty, focusing on the Eurasian Economic Union. This project helped me develop deep expertise in my topic area, and allowed me to consolidate all the theoretical, methodological and research skills taught throughout the program.

“The degree complements my technical background in IT and has helped me develop first-class analytical and research skills, as well as many important, transferable skills such as public speaking, debating, negotiating, critical thinking, persuasive writing and learning a foreign language.

“It has helped me to make sense of today’s highly complex international environment, and to develop an independent, well-informed and critical mindset towards issues of global significance. I’m now more versatile and adaptable to the changing demands of today’s global marketplace.”



# Master of International Security

Understand traditional and emerging security challenges and apply theories to current events and policy debates. Explore complex, interconnected issues such as causes and consequences of war; ethnic, religious and ideological conflict; and threats from climate change, disease and nuclear proliferation. We will draw on economics, political science, law, business, public health and more.

## Why study with us?

We provide an extraordinary depth and breadth of study. Our teachers are actively engaged with the policy community and regularly undertake field research within the region.

Through our Centre for International Security Studies, you will have the opportunity to take classes in international relations, public policy and Australian politics, and receive broad training in international security.

Our Department of Government and International Relations has links to some of the major policy think tanks in Australia, such as the Australian Institute of International Affairs and the Lowy Institute.

## Careers and opportunities

This degree enables you to pursue a career in government, diplomacy, development, defence, intelligence, business, risk management, or journalism within humanitarian, government and non-government organisations.

Our graduates can be found at KPMG, the Australian Federal Police, the Department of Defence and the Lowy Institute, to name just a few employers.

## Course structure

96 credit points (cp), comprising:

- 4 core units (24 cp):
  - New Security Challenges
  - Strategy and Security in the Asia-Pacific
  - Statebuilding and 'Fragile States'
  - International Security
- 3 core electives (18 cp)
- 8 electives (48 cp)
- 1 capstone experience (6 cp)

## Specialisations

- Economics
- Foreign Language
- Global Migrations
- International Law
- Peace and Conflict Studies
- Political Economy
- Social Research
- Sociology, Social Policy and Development
- US Studies

## Duration

- 2 years full time
- up to 6 years part time (domestic students only)

## Commencing semesters

- Semester 1 (February)
- Semester 2 (August)

## Other study options

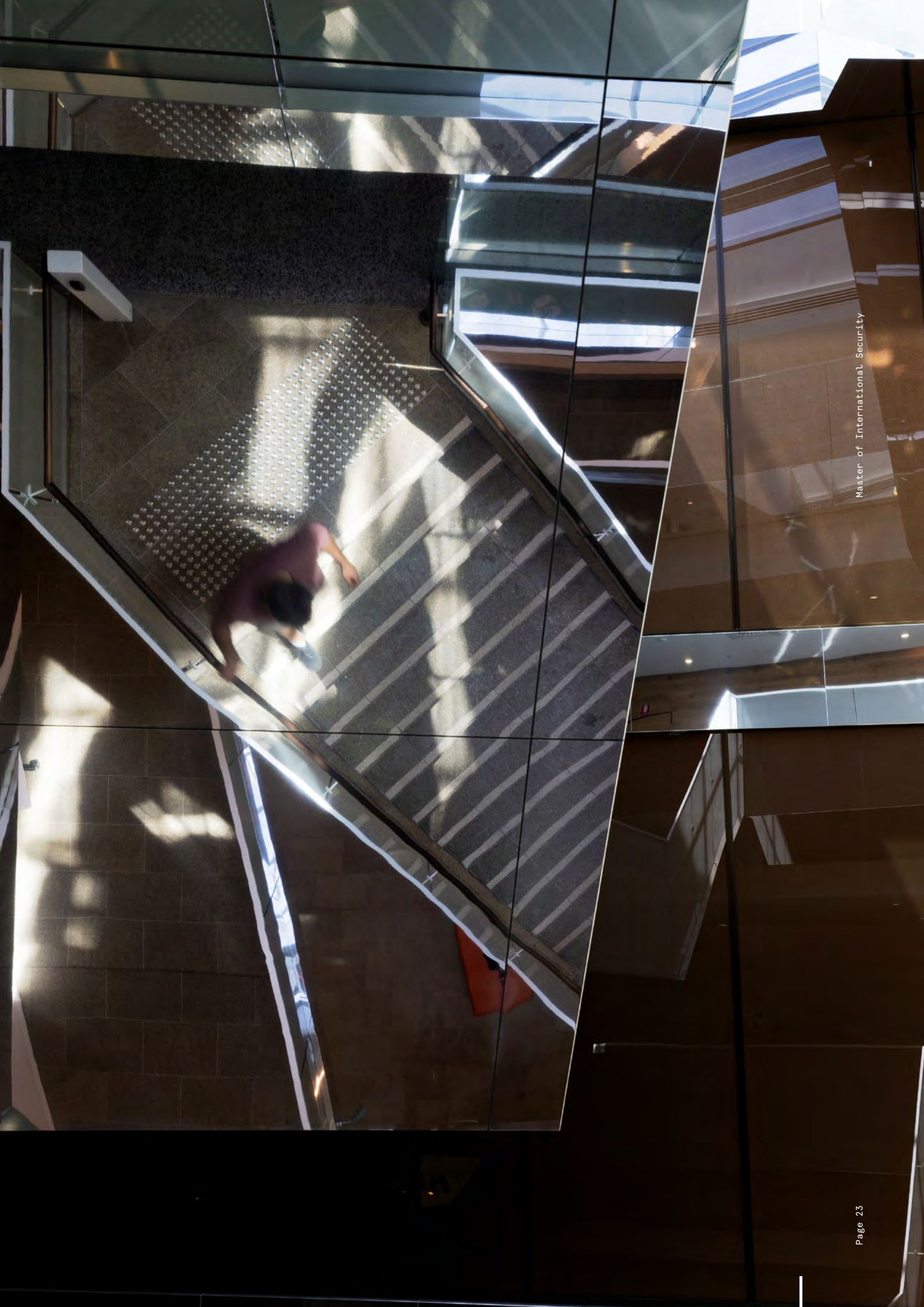
- Graduate Diploma in International Security (48 cp)
- Graduate Certificate in International Security (24 cp)

## More information

For full course information and specific admission criteria, visit:

- [sydney.edu.au/courses/master-of-international-security](https://sydney.edu.au/courses/master-of-international-security)







# Master of Peace and Conflict Studies

Gain a distinctive qualification in this growing field, focusing on the interconnections between peace, conflict, justice and human rights. From conflict transformation after mass violence to the role of the media in peace building, we will explore the intellectual and practical challenges of attaining peace with justice in a program that you can tailor to suit your personal interests and career aspirations.

## Why study with us?

Learn from leading scholars and expert commentators and practitioners in a range of units of study covering peace journalism, transitional justice, human rights, reconciliation, the psychology of peace, non-violence, community mediation, the United Nations, conflict-sensitive development, religion, war and peace. Take the opportunity to learn skills in conflict analysis and resolution in the program's capstone unit.

You can complete a dissertation or social justice internship pathway as part of the degree, preparing you for higher degree research or professional practice. Our distance learning program allows mid-career professionals to obtain a globally recognised qualification without having to relocate to Sydney.

## Careers and opportunities

Our graduates enjoy challenging and rewarding professional careers with the United Nations and non-government organisations including UNICEF, the World Bank and Oxfam, as well as media outlets including the *ABC* and the *Guardian*, the private sector and government departments and agencies including AusAID.

A number of our graduates have gone on to pursue PhDs and academic careers.

## Course structure

72 credit points (cp), comprising:

- at least 3 core units (18 cp) from:
  - Key Issues in Peace and Conflict Studies
  - Human Rights, Peace and Justice
  - Peace of Mind: The Psychology of Peace
  - Reconciliation and Conflict Transformation
- at least 3 core electives (18 cp)
- up to 4 electives (24 cp)
- 1 capstone experience (6 cp)

## Specialisation

- Social Research

## Duration

- 18 months full time
- up to 6 years part time (domestic students only)

## Commencing semesters

- Semester 1 (February)
- Semester 2 (August)

## Other study options

- Graduate Diploma in Peace and Conflict Studies (48 cp)
- Graduate Certificate in Peace and Conflict Studies (24 cp)

## More information

For full course information and specific admission criteria, visit:

- [sydney.edu.au/courses/master-of-peace-and-conflict-studies](https://sydney.edu.au/courses/master-of-peace-and-conflict-studies)

# Master of Political Economy

Gain extensive knowledge of key trends underlying the global economy and its transformation. Analyse economic issues in their social and political contexts and from a variety of perspectives. Develop an understanding of issues such as power and inequality, globalisation and its impact on national economic policy settings, and the trade-offs between the free market and broader social concerns.

## Why study with us?

The Department of Political Economy is a leading centre for economic analysis and research. The Master of Political Economy will provide you with a deeper knowledge of current economic challenges and trends.

Taught from a range of heterodox economics traditions, our approach promotes dialogue and synthesis with other social science disciplines. Subjects include country risk, wealth and income inequality, labour migration, environmental sustainability, finance and fragility, trade and development.

## Careers and opportunities

Graduates enjoy careers in government and international agencies, business, leading research institutions, the community sector and the media.

## Inside view

### Jacob Stone

Master of Political Economy

“This degree offers a wide variety of units that analyse relevant and engaging economic issues. I took an international field-based unit in Laos that explored fundamental issues such as population growth, food security, resource scarcity and economic globalisation.”

## Course structure

72 credit points (cp), comprising:

- 3 core units (18 cp):
  - Core Concepts in Political Economy
  - Strategic Debates on Economic Change
  - Research in Political Economy
- 3 core electives (18 cp)
- 4 electives (24 cp)
- 1 capstone experience (6 cp)

### Specialisations

- Country Risk Assessment
- Social Research

### Duration

- 18 months full time
- up to 6 years part time (domestic students only)

### Commencing semesters

- Semester 1 (February)
- Semester 2 (August)

### Other study options

- Graduate Diploma in Political Economy (48 cp)
- Graduate Certificate in Political Economy (24 cp)

### More information

For full course information and specific admission criteria, visit:

- [sydney.edu.au/courses/master-of-political-economy](https://sydney.edu.au/courses/master-of-political-economy)



# Master of Public Policy

Gain critical perspectives on the global, national and local levels of a rapidly changing policy environment with growing public scrutiny and complex challenges. Explore the opportunities and constraints stemming from political, social, economic, civil and technological factors. We will explore migration, corruption, crisis management, governance and the environment through real-world examples.

## Why study with us?

This degree is designed for people who work in (or are looking to work in) government and the public sector, and for those working in non-government or private sector bodies who seek a better understanding of the role of government in public policymaking.

Based within the Department of Government and International Relations, electives include international relations, comparative politics and Australian politics, enabling a deeper understanding of policy design and implementation.

Join practically minded and career-oriented peers and create valuable networks. Capitalise on the many government and private sector networks available in Sydney.

## Careers and opportunities

This program provides opportunities for a career in administration, research, planning, education and management.

Our graduates are policy analysts in national, state and local government, advisers to political parties, business groups and trade unions, strategic planners or advisers on government/business relations, policy experts in non-profit or 'third-sector' agencies, and policy advocates for international organisations such as the United Nations.

## Course structure

96 credit points (cp), comprising:

- 2 core units (12 cp):
  - Policy Making, Power and Politics
  - Public Management and Governance
- 5 core electives (30 cp)
- 8 electives (48 cp)
- 1 capstone experience (6 cp)

## Specialisations

- Economic Policy
- Foreign Language
- Global Migration
- International Law
- International Policy
- Media and Cultural Policy
- Optional exchange
- Peace and Conflict Studies
- Political Economy
- Social Policy
- US Studies

## Duration

- 2 years full time
- up to 6 years part time (domestic students only)

## Commencing semesters

- Semester 1 (February)
- Semester 2 (August)

## Other study options

- Graduate Diploma in Public Policy (48 cp)
- Graduate Certificate in Public Policy (24 cp)

## More information

For full course information and specific admission criteria, visit:

- [sydney.edu.au/courses/master-of-public-policy](https://sydney.edu.au/courses/master-of-public-policy)





## Inside view

---

### **Freya Crawshaw**

Master of Public Policy

Senior Policy Officer, NSW Department of Education

“Having been employed in a policy role in the Commonwealth Public Service, I recognised the need to increase my knowledge about public policy. I chose the Master of Public Policy because it has a strong focus on different approaches to public policy and public management.

“As part of the degree, I researched a number of policy issues in areas as diverse as European Union agricultural policies and homelessness policy responses. These research projects improved my ability to analyse different policies quickly and use a range of public policy tools.

“Having a postgraduate qualification has given me an advantage when applying for jobs and given me greater confidence at work because of my expanded knowledge of public policy issues and tools.”

# Master of Social Work

Reflect on your practice, appraise alternative practices and theories, and assess your clients' needs in new ways. Critically evaluate your existing practice and gain skills to promote change, improve services and improve the lives and situations of the people you work with. Examine theories and initiatives in social policy and their impacts.

## Why study with us?

The program's combined focus on social work and social policy provides a solid intellectual foundation for work in this sector. You will learn from teachers who sit on local, state and national advisory boards, serve on community welfare organisation boards and provide advice to a range of welfare agencies.

You have the opportunity to study with educators engaged with practice research across a wide range of fields, including:

- specific population groups: women, youth, migrants, Aboriginal and Torres Strait Islander peoples and other specific groups
- mental health, practice with Aboriginal Australians, critical leadership, climate change and social work, working with communities
- theories of social work practice
- comparative studies of welfare policy and practice in a range of sociocultural settings (including Europe and Asia)
- history and theory of the global social policy
- a range of social welfare issues and social policy areas.

## Careers and opportunities

This program provides opportunities for careers in evaluating existing practice, promoting change and improving services and outcomes that affect clients' circumstances.

## Course structure

48 credit points (cp), comprising:

- 2 core units (12 cp):
  - Social Research
  - Practice Theory Development
- 4 or 5 electives (24 or 30 cp)
- 1 capstone experience (6 or 12 cp)

## Duration

- 1 year full time
- 2 years part time (domestic students only)

## Commencing semesters

- Semester 1 (February)
- Semester 2 (August)

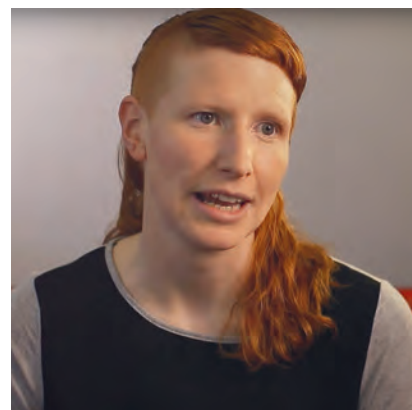
## Other study options

- Graduate Diploma in Social Work (36 cp)
- Graduate Certificate in Human and Community Services (24 cp)

## More information

For full course information and specific admission criteria, visit:

- [sydney.edu.au/courses/master-of-social-work](https://sydney.edu.au/courses/master-of-social-work)



## Inside view

**Renata Field**  
Master of Social Work

"Since I've graduated, I've worked as a case worker and done further research. I'm now working in advocacy and policy. I'd never dreamed that I would be able to represent women and children escaping domestic violence."

# Master of Social Work (Qualifying)

Become an accredited social worker, advance your career and become equipped to take on social work roles in health and community services. Make a positive difference in mental health, women's services, corrections, disability support, child and family services, migrant and refugee services or international development.

## Why study with us?

Our Master of Social Work (Qualifying) program is taught by experienced and highly skilled teachers who will guide you in an in-depth understanding of the health, social development and community services sector. Gain invaluable real-world experience and take up opportunities to apply theory to best practice via two work placements.

This program is recognised by the Australian Association of Social Workers and aligned with the association's key priority learning areas for accreditation: child protection; cross-cultural practice; standards for practice with Aboriginal and Torres Strait Islander people and communities; and mental health.

## Career and opportunities

The Master of Social Work (Qualifying) equips you with the skills and knowledge to become a professional social worker in the health, community services or non-government sector. It is also a pathway to leadership roles in social work and related professions.

## Course structure

96 credit points (cp), comprising:

- 72 cp of core units
- 3 electives (18 cp), including at least one research unit
- 1 capstone experience (6 cp)

## Duration

- 2 years full time
- 4 years part time (domestic students only)

## Commencing semesters

- Semester 1 (February)

## More information

For full course information and specific admission criteria, visit:

- [sydney.edu.au/courses/master-of-social-work-qualifying](https://sydney.edu.au/courses/master-of-social-work-qualifying)





# Graduate Certificate in Human and Community Services

Understand and appreciate the latest developments in policy and its application, practice and research in this vital and growing sector. Strengthen your professional knowledge and specialise in your preferred sector, including community work policy and practice, mental health practice standards, and policy responses to domestic violence in Australia.

## Why study with us?

You will be taught by experienced and highly skilled academic staff, while group discussion and class interaction will help you understand and develop ideas and maximise your skills.

This graduate-level program may provide a pathway for suitable candidates into the Master of Social Work (Qualifying), which leads to a professional qualification in social work recognised by the Australian Association of Social Workers.

## Careers and opportunities

The Graduate Certificate in Human and Community Services provides a solid foundation in the social justice and social welfare arena.

## Course structure

24 credit points (cp), comprising:

- 1 core unit (6 cp):  
Practice: Theory Development
- 3 electives (18 cp)

### Specialisation

- Domestic and Family Violence

### Duration

- 6 months full time when commencing in Semester 2
- 1 year part time when commencing in Semester 1 (domestic students only)

### Commencing semesters

- Semester 1 (February)
- Semester 2 (August)

### More information

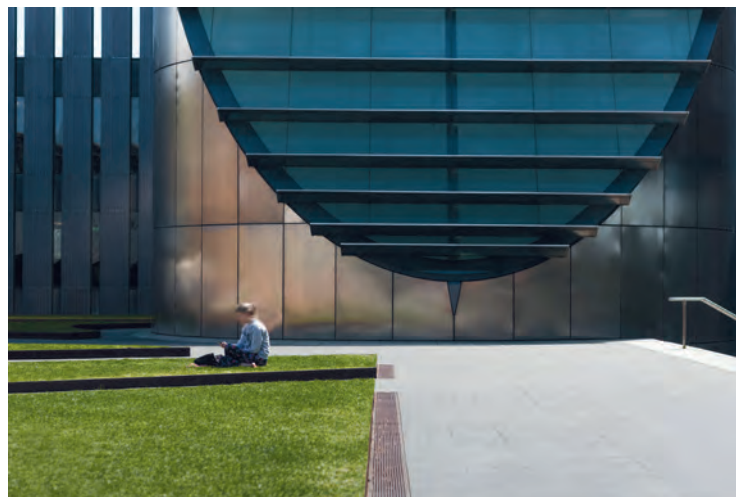
For full course information and specific admission criteria, visit:

- [sydney.edu.au/courses/graduate-certificate-in-human-and-community-services](https://sydney.edu.au/courses/graduate-certificate-in-human-and-community-services)



# Research at Sydney

The University of Sydney is one of the world's top 45 research universities. Our researchers are tackling some of the world's greatest problems.



We are one of the world's best research universities and a member of Australia's prestigious Group of Eight network and the Association of Pacific Rim Universities. This partners us with others institutions that excel in research, including Stanford University, the University of California, Los Angeles (UCLA), Shanghai Jiao Tong University and the University of Hong Kong.

We're home to more than 90 research and teaching centres and have a track record of excellence.

Our research combines the expertise and talents of scholars from many disciplines. This collaborative spirit drives our interdisciplinary research centres, including several dedicated to deepening our understanding of China and Southeast Asia and increasing Australia's engagement in these regions.

The Australian Government ranked all of our research at world standard or above in its latest Excellence in Research for Australia ratings.

Find out more about our current research:

– [sydney.edu.au/research](https://sydney.edu.au/research)

## Our research degrees

Embarking on a research degree at Sydney is an opportunity to work alongside some of the world's brightest and most accomplished academics. We offer exceptional resources and we're investing in major new facilities to support collaboration and partnerships with researchers from diverse disciplines who are tackling society's most challenging problems.

We have the drive to challenge traditional ways of thinking. You will have all the support you need to contribute to research that makes a meaningful, real-world impact and changes lives.

We offer several higher degrees by research – the Doctor of Philosophy (PhD) is the highest qualification that you can attain in Australia.

Learn more about our research degrees:

– [sydney.edu.au/study/pg-research](https://sydney.edu.au/study/pg-research)

## Breadth and depth

Our research extends across a diverse range of disciplines in the arts and social sciences, embracing traditional, emerging and cross-disciplinary subjects. Our research agenda is driven by the pursuit of new knowledge that benefits Australia and the wider world.

Our staff have international reputations in their chosen fields, reflected in the high level of publications (books, articles, chapters and conference papers) they publish.

The faculty's newest research centre, the Sydney Social Sciences and Humanities Advanced Research Centre, instantiates our commitment to addressing the intellectual and practical challenges that face the world.

Its researchers tackle a range of issues including human differences and diversity; international orders, regimes and people; education, values and learning; political, social, economic and cultural systems, and contemporary local, national and global policy problems.

To find out more, visit:

– [sydney.edu.au/arts/pg-research](https://sydney.edu.au/arts/pg-research)

# Master of Arts (Research)

If you would like to extend your studies beyond your undergraduate degree but do not have an undergraduate degree with honours or other qualification for entry into a Master of Philosophy (MPhil) or Doctor of Philosophy (PhD), the Master of Arts (Research) is for you.

Primarily completed by thesis, the Master of Arts (Research) degree can be undertaken in a range of subject areas and is a qualification for admission to higher degree research candidature.

You cannot upgrade to a PhD without completing a master's degree.

## Course structure

The Master of Arts (Research) can be undertaken by a combination of thesis and coursework, or by thesis only, as outlined below:

- 2 postgraduate units of study (12 credit points) and a thesis of 26,000 to 28,000 words
- 1 postgraduate unit of study (6 credit points) and a thesis of 28,000 to 30,000 words
- a thesis of 30,000 to 35,000 words.

A thesis is an original work on an approved topic that you research and write under the supervision of a member of our academic staff.

## Duration

- 1 to 2 years full time
- 2 to 4 years part time (domestic students only)

It is essential to settle on a research proposal before applying. You should discuss potential topics with possible supervisors, either in person or by email.

## More information

For full course information and specific admission criteria, visit:

- [sydney.edu.au/courses/master-of-arts-research](https://sydney.edu.au/courses/master-of-arts-research)





# Doctor of Arts

# Doctor of Social Sciences

Pursue a higher degree of rigorous scholarship and advance your professional practice with a Doctor of Arts or Doctor of Social Sciences.

The professional doctorate is designed to respond to the rapid changes taking place in the professional workplace that require professionals such as journalists, creative writers, anthropologists, linguists, policy advisers and managers to upgrade their qualifications.

This higher degree will enable you to become more aware of the changing environment of your professional practice and developments within your field, and increase your knowledge of research and analytical techniques. You will develop strong intellectual and practical skills that are in high demand.

## Course structure

The professional doctorate comprises two units of coursework training and research leading to a thesis of 60,000 to 80,000 words. Candidates who submit a significant creative project complete a thesis of 20,000 to 30,000 words.

You may complete research in various areas, such as creative writing, digital cultures, gender and cultural studies, government and international relations, museum studies, peace and conflict studies, performance studies, political economy or sociology and social policy.

Examples of significant creative projects include novels, memoirs and biographies, collections of short stories, poetic works, plays and other performance scripts, performed pieces, documentaries, audio and/or video works, feature articles, and documented contributions to public debates such as submissions, reports and major essays.

It is essential to settle on a research proposal before applying. Discuss potential topics with possible supervisors, either in person or by email.

## Duration

- 3 to 4 years full time
- 6 to 8 years part time (domestic students only)

## More information

For full course information and specific admission criteria, visit:

- [sydney.edu.au/courses/doctor-of-arts](https://sydney.edu.au/courses/doctor-of-arts)
- [sydney.edu.au/courses/doctor-of-social-sciences](https://sydney.edu.au/courses/doctor-of-social-sciences)



# Master of Philosophy

The Master of Philosophy (MPhil) involves research and advanced coursework. You will be assigned a research supervisor and an auxiliary supervisor. You will be required to complete a probationary year and produce an extended research proposal at the end of that year.

## Arts and social sciences

You can carry out research in any of more than 40 subject areas within the schools of Economics; Education and Social Work; Languages and Cultures; Literature, Art and Media; Philosophical and Historical Inquiry; and Social and Political Sciences.

Research may also be undertaken in association with prominent humanities and social sciences research centres or groups.

### Course structure

Candidates for the MPhil will research and write a thesis of 40,000 to 60,000 words on an approved topic under the supervision of a member of our academic staff.

### Duration

- 1 to 2 years full time
- 2 to 4 years part time (domestic students only)

### More information

For full course information and specific entry requirements, visit:

- [sydney.edu.au/courses/master-of-philosophy-arts-and-soc-sci](https://sydney.edu.au/courses/master-of-philosophy-arts-and-soc-sci)

## Social work

Research can be undertaken in areas including gender relations and gender identity; Indigenous issues; sexuality and sexual identity; social change; sociology of knowledge; knowledge building in social work practice; ageing and the end of life; child and young people safety and wellbeing; counselling; welfare and community services; disability and mental health; social policy; social work in health care; violence against women and children; or an area negotiated with a potential supervisor.

### Course structure

You will be required to complete a probationary year and produce an extended research plan at the end of that year. Examination is by presentation of a thesis of about 30,000 words.

### Duration

- 2 years full time
- up to 4 years part time (domestic students only)

### More information

For full course information and specific admission criteria, visit:

- [sydney.edu.au/courses/master-of-philosophy-in-social-work](https://sydney.edu.au/courses/master-of-philosophy-in-social-work)







# Doctor of Philosophy (Arts and Social Sciences)

The Doctor of Philosophy (PhD) is a degree completed entirely by research. Students undertaking this degree will work with an allotted supervisor and an associate supervisor.

The Faculty of Arts and Social Sciences at the University of Sydney is consistently ranked as one of the world's most outstanding academies for research in the humanities and social sciences.

The faculty's schools and related centres and institutes provide abundant PhD research opportunities with academic staff members who are experts and leaders in their fields of research.

## Course structure

PhD candidates are required to complete a probationary year and to produce an extended thesis proposal (10,000 to 12,000 words) at the end of their first year of full-time candidature (or the part-time equivalent).

The normal length of a PhD thesis is about 80,000 words.

Examination is by presentation of the thesis.

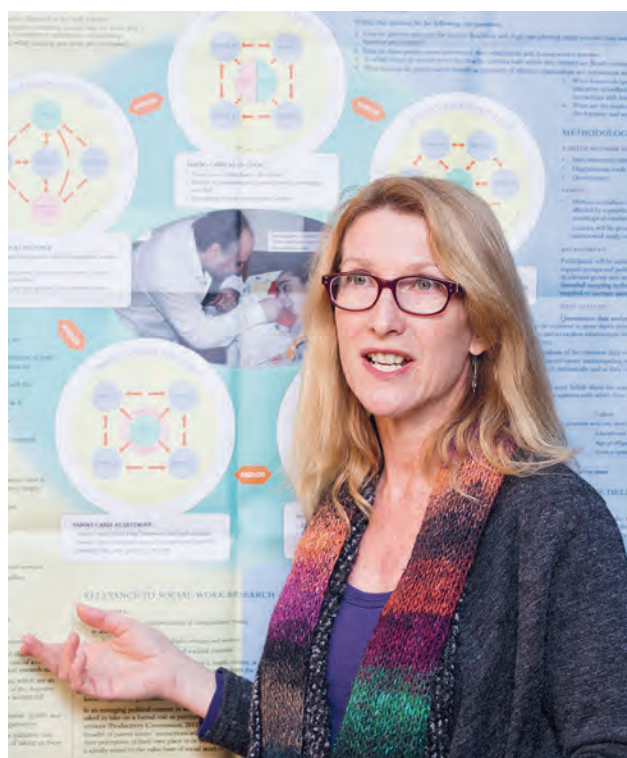
## Duration

- 3 to 4 years full time
- 6 to 8 years part time (domestic students only)

## More information

For full course information and specific admission criteria, visit:

- [sydney.edu.au/courses/doctor-of-philosophy-arts-and-soc-sci](https://sydney.edu.au/courses/doctor-of-philosophy-arts-and-soc-sci)



## Inside view

**Pam Joseph**  
Doctor of Philosophy (Social Work)

“There’s so much satisfaction to be gained from the research process in its own right – I’ve learned so much about different methodologies and how they do or don’t apply to my own work, the ethical issues that need to be considered, and how my own philosophies shape the work I am doing.”

## Inside view

---

### Gareth Bryant

PhD (Political Economy)

“I chose to undertake my PhD with the Department of Political Economy because it provided an opportunity to engage in an in-depth research project in an area I am passionate about: climate change.

“The Faculty of Arts and Social Sciences hosts the leading political economy program in the world and offers opportunities to connect with researchers across the social sciences and humanities. The interdisciplinary make-up of the faculty makes it possible to develop critical understandings of, and formulate solutions to, pressing social and environmental challenges.

“Since completing my PhD in 2016, I have been a Lecturer in Political Economy at the University of Sydney. I have also continued my research and have a contract with Cambridge University Press to publish a book developed from my PhD thesis.”



# Fees and costs

## Domestic students

Most domestic postgraduate students study in a fee-paying place; however, a limited number of Commonwealth supported places (CSPs) may be available for some courses, on a competitive basis. To determine whether your specific course offers CSPs, visit:

- [sydney.edu.au/courses](https://sydney.edu.au/courses)

### Fee-paying students

The University calculates the tuition fees for single postgraduate coursework degrees based on an annual course fee that is subject to increase each year. Fees are based on a full-time student enrolment load of 24 credit points per semester, or 48 credit points per year (1.0 EFTSL). If your study load for the year is more or less than 1.0 EFTSL, your tuition fee or student contribution amount will differ. Check the tuition fees for your specific course at:

- [sydney.edu.au/courses](https://sydney.edu.au/courses)

The Australian Government does not subsidise fee-paying places. However, the government-funded loan program FEE-HELP is available to eligible domestic postgraduate coursework students to assist in paying your tuition fees. For more information, visit:

- [www.studyassist.gov.au](https://www.studyassist.gov.au)

### CSP students

Your tuition fees will be subsidised by the Australian Government. You will pay the remainder, called a 'student contribution amount' and set by the University for your particular course of study. Exact student contribution amounts for your course will depend on your calendar year of study and the specific units of study in which you enrol. Costs can vary depending on the discipline of study (student contribution band) and study load of each unit.

Student contribution amounts are reviewed annually by the University and will increase each year of your period of study (subject to an Australian Government-specified cap), effective at the start of each calendar year. Eligible CSP students can obtain a full or part HECS-HELP loan for their contribution. For details, visit:

- [www.studyassist.gov.au](https://www.studyassist.gov.au)

## Research Training Program

The government-funded Research Training Program provides funding for eligible domestic higher degree by research candidates to cover the cost of their tuition fees for the duration of an accredited course.

This can be up to four years of full-time-equivalent study for a doctorate by research and two years of full-time-equivalent study for a master's degree by research. To find out more, visit:

- [sydney.edu.au/rtp](https://sydney.edu.au/rtp)

## International students

The University calculates the tuition fees for postgraduate degrees based on an annual course fee that is subject to an increase each year. Tuition fees vary between courses and the calendar year that you undertake study. Fees are based on a full-time student enrolment load of 24 credit points per semester, or 48 credit points per year (1.0 EFTSL). If your study load for the year is more or less than 1.0 EFTSL, your tuition fee will differ.

## Annual review

Tuition fees are subject to annual review by the University and will increase each year, effective at the start of each calendar year.

### More information

For more information about tuition fees and other costs, visit:

- [sydney.edu.au/study/finances](https://sydney.edu.au/study/finances)



# How to apply

Every year we welcome outstanding local and international students who surprise, inspire and support each other throughout their studies.

## Steps

### Step 1: Choose your course

The Faculty of Arts and Social Sciences offers a wide range of postgraduate degrees. Find your course here:

- [sydney.edu.au/courses](https://sydney.edu.au/courses)

### Step 2: Check the admission criteria

You need to meet certain admission criteria to apply for our courses. Learn more:

- [sydney.edu.au/study/admission-criteria](https://sydney.edu.au/study/admission-criteria)

### Step 3: Attend an information event

Visit us on campus and speak with faculty representatives, career experts and admissions advisers about your study options. For a list of upcoming events in Sydney or overseas, visit:

- [sydney.edu.au/event-dates](https://sydney.edu.au/event-dates)
- [sydney.edu.au/international-open-days](https://sydney.edu.au/international-open-days)

### Step 4: Apply online

You will need to submit your application online by the closing date. Learn more:

- [sydney.edu.au/study/how-to-apply](https://sydney.edu.au/study/how-to-apply)

### Step 5: Apply for scholarships

The University of Sydney and the Faculty of Arts and Social Sciences offer a range of postgraduate coursework and research scholarships. Learn about the scholarships on offer at:

- [sydney.edu.au/scholarships](https://sydney.edu.au/scholarships)

## Recognition of prior learning

Waivers and reductions in the volume of learning may be granted to master's students in recognition of prior learning (such as completion of a major or honours in the subject area).

If you wish to apply for recognition of prior learning, see pages 8 and 9 for more information, speak with the faculty or refer to our website:

- [sydney.edu.au/study/credit](https://sydney.edu.au/study/credit)

## English language requirements

You will need to demonstrate English language proficiency if:

- English is not your first language, or
- you have not undertaken tertiary studies in English within the past five years at an institution where the medium of instruction, assessment and examination was English.

To learn more, visit:

- [sydney.edu.au/study/english-reqs](https://sydney.edu.au/study/english-reqs)

Minimum English language test scores needed for entry into our degrees

Program	IELTS	TOEFL iBT
All coursework programs (except those listed below)	7.0 overall, minimum 6.0 in each band	96 overall, 17 in R,L,S and 19 in W
Master of Economic Analysis	7.0 overall, minimum 6.5 in each band	96 overall, 20 in R,L,S and 22 in W
Master of Social Work (Qualifying)	7.5 overall, minimum 7.0 in each band	105 overall, 23 in R,L,S and 25 in W
Research degrees	6.5 overall, minimum 6.0 in each band	85 overall, 17 in R,L,S and 19 in W

L = Listening, R = Reading, S = Speaking, W = Writing  
IELTS = International English Language Testing System  
TOEFL iBT = Test of English as a Foreign Language: internet based

# CRICOS codes

Courses with a CRICOS code are available for full-time study on-shore in Australia on a student visa.

Course	CRICOS code
Executive Master of Arts and Social Sciences	083319A
Master of Economics	083950M
Dual degree: Master of Economics (Fudan University)	083950M
Master of Economic Analysis	079202D
Master of Development Studies	082903D
Master of Human Rights	082905B
Master of International Relations	079205A
Master of International Security	082906A
Master of Peace and Conflict Studies	082908K
Master of Political Economy	079642B
Master of Public Policy	082909J
Master of Social Work	023334K
Master of Social Work (Qualifying)	072217J
Graduate Certificate in Human and Community Services	068550G
Master of Arts (Research)	050922K
Doctor of Arts	045007K
Doctor of Social Sciences	045008J
Master of Philosophy (Arts and Social Sciences)	009061C
Master of Philosophy in Social Work	039860A
Doctor of Philosophy (Arts and Social Sciences)	0100200

# Important dates

Here are some important dates to add to your calendar to plan for the year ahead.

## **Postgraduate Info Evening**

Wednesday 4 December 2019

## **Info Day**

Thursday 19 December 2019

## **Semester 1, 2020 applications close\***

Domestic students: Tuesday 11 February 2020

International students: Friday 31 January 2020

## **Semester 2, 2020 applications close\***

Domestic students: Wednesday 15 July 2020

International students: Tuesday 30 June 2020

To find out about other important University dates, visit:

– [sydney.edu.au/dates](https://sydney.edu.au/dates)

\* Some exceptions apply. Please search for your course online to check its exact application closing dates: [sydney.edu.au/courses](https://sydney.edu.au/courses)



This guide provides the key information you need to apply for a degree here, but the next step is up to you.

To learn more, come and meet us at one of our postgraduate information sessions, call our helpline or visit our website.

**[sydney.edu.au/postgraduate](https://sydney.edu.au/postgraduate)**

### **Contact us**

[sydney.edu.au/ask](https://sydney.edu.au/ask)

1800 SYD UNI (1800 793 864)

+61 2 8627 1444 (outside Australia)