

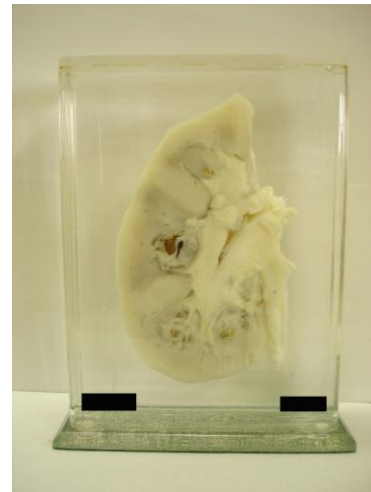
PATHOLOGICAL AND ANATOMICAL SPECIMENS RECONDITIONING AND REBOTTLING SERVICE

The Pathology Museum provides reconditioning and rebottling service for pathological and anatomical specimens. A customized Perspex box is made for each specimen and all mounting and solutions are included.

Below is the price for Perspex box construction and mounting of specimen.

Up to	Cost
500 cm ³	\$145
1000 cm ³	\$175
1500 cm ³	\$217
2500 cm ³	\$247
4000 cm ³	\$294
5500 cm ³	\$330
7000 cm ³	\$392
8500 cm ³	\$427

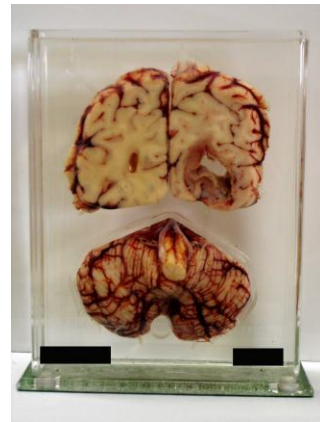
Boxes are also available separately [The cost is \$65 less than the amount indicated in the table above].



Please note that the prices above are for containers that are more than 35 cm tall.

All prices quoted are exclusive of GST and delivery charges.

Minimum charge \$140.



Please note that a fee of no less than \$25 is incurred for specimen that requires fat removal and \$50 for cradle made for brain specimen.

For further enquiries, please contact Alfee Liau at 9351 2933 or alfee@med.usyd.edu.au