

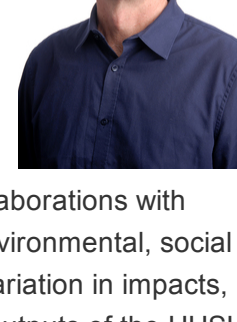
HUMAN HEALTH AND SOCIAL IMPACTS NODE

Newsletter



August 2020

Note from the Node Leader, Associate Professor Geoffrey Morgan



Welcome to the Human Health and Social Impacts (HHSI) Node Newsletter for August 2020. The University of Sydney leads the HHSI Node research and policy translation program funded by NSW Department of Planning, Industry and Environment (DPIE) and NSW Health. The HHSI Node's three year research program includes University of Sydney researchers from a range of disciplines and collaborations with other universities and organisations. Our research focuses on the environmental, social and economic consequences of climate change, including regional variation in impacts, vulnerability and adaptation in NSW. This newsletter highlights the outputs of the HHSI Node research as well as related developments in Australia and internationally. I hope you enjoy this HHSI Node update.

HUMAN HEALTH AND SOCIAL IMPACTS NODE

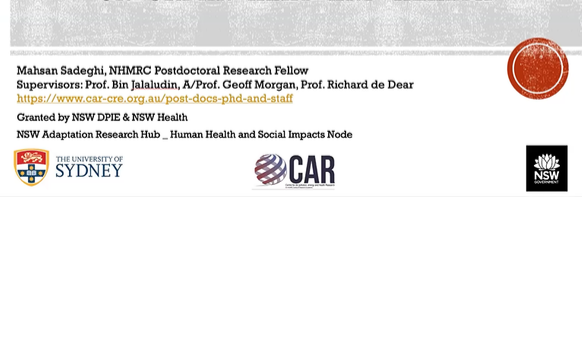
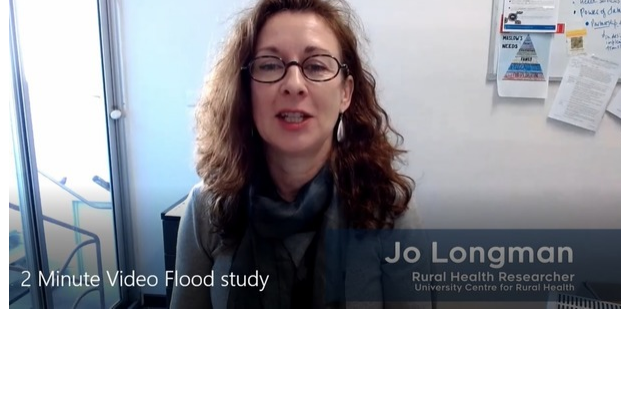
July 2017 - July 2020



<https://www.sydney.edu.au/medicine/health/our-research/research-centres/climate-change-human-health-and-social-impacts-node.html>

Research bites

[Listen to Dr Jo Longman](#) from the University Centre for Rural Health talk about their research examining the mental health impacts from the 2017 Lismore flooding.



Dr Mahsan Sadeghi talks about the impact of adaptation technologies on urban heat and health. [Catch up on this webinar](#) as part of the University of Sydney's Indoor Environmental Quality (IEQ) Lab Seminar Series.

Upcoming Events

Save the date! Node Research Showcase: December 8th 2020.

Please save the date for our HHSI Node Research Showcase scheduled for **December 8th 2020**. Hear about all of our great research on climate and health and identify collaborative opportunities for 2021! If you missed out on our HHSI Node Showcase held in March 2020, you can access the powerpoint slides [here](#).

Node publications that you may have missed out on....

- Morris NB, Gruss F, Lempert S, English T, Hospers L, Capon A and Jay O (2019) **A preliminary study of the effect of dousing and foot immersion on cardiovascular and thermal responses to extreme heat**. Journal of the American Medical Association; 322(14):1411-1413; [doi:10.1001/jama.2019.13051](https://doi.org/10.1001/jama.2019.13051)
- Morris NB, English T, Hospers L, Capon A and Jay O (2019) **The effects of electric fan use under differing resting heat index conditions: A clinical trial**. Annals of Internal Medicine; Nov 5;171(9):675-677; [doi: 10.7326/M19-0512](https://doi.org/10.7326/M19-0512)
- Capon A, Jay O, Ebi K, Lo S (2019) **Heat and health: A forthcoming Lancet Series**. Lancet; 394(10198):551-552; [doi: 10.1016/S0140-6736\(19\)31759-3](https://doi.org/10.1016/S0140-6736(19)31759-3)
- Jay O and Capon A (2018) **Using physiological evidence in heat wave public policy**. Lancet Planetary Health; 2(1):e10. [https://doi.org/10.1016/S2542-5196\(17\)30178-X](https://doi.org/10.1016/S2542-5196(17)30178-X)
- Longman, J.M., Bennett-Levy, J., Matthews, V. et al. (2019). **Rationale and methods for a cross-sectional study of mental health and wellbeing following river flooding in rural Australia, using a community-academic partnership approach**. BMC Public Health 19, 1255. <https://doi.org/10.1186/s12889-019-7501-y>
- Matthews V, Longman J, Berry HL, Passey M, Bennett-Levy J, Morgan GG, Pit S, Rolfe M, Baillie RS (2019). **Differential Mental Health Impact Six Months After Extensive River Flooding in Rural Australia: A Cross-Sectional Analysis Through an Equity Lens Front**. Public Health, 06 December <https://doi.org/10.3389/fpubh.2019.00367>
- King J, Longman J, Matthews V, Bennett-Levy J, Baillie R, Carrigoe S, Passey M (2020). **Disruptions and mental health outcomes following Cyclone Debbie**. Australian Journal of Emergency Management. 35:3 [ISSN: 1324-1540](https://doi.org/10.1186/s1324-1540)
- Fitzgerald K, Pit S, Rolfe M, McKenzie J, Matthews V, Longman J, Baillie R. (2020) **Cross sectional analysis of depression amongst Australian rural business owners following cyclone-related flooding**. BMC Journal of Occupational Medicine and Toxicology. 15: 12. <https://doi.org/10.1186/s12995-020-00264-1>
- Boylan S, Beyer K, Schlosberg D, Mortimer A, Hime N, Scalley B, Alders R, Corvalan C, Capon A. **A conceptual framework for climate change, health and wellbeing in NSW, Australia**. Public Health Res Pract. 2018;28(4):e2841826. <https://doi.org/10.17061/phrp2841826>
- Edokpolo B, Allaz-Barnett N, Irwin C, et al. **Developing a Conceptual Framework for Environmental Health Tracking in Victoria, Australia**. Int J Environ Res Public Health. 2019;16(10):1748. Published 2019 May 17. [doi:10.3390/ijerph16101748](https://doi.org/10.3390/ijerph16101748)

Read, watch, listen

Publications

- Hall NL, Crosby L. **Climate Change Impacts on Health in Remote Indigenous Communities in Australia** [published online ahead of print, 2020 Jun 16]. Int J Environ Health Res. 2020;1-16. [doi:10.1080/09603123.2020.1777948](https://doi.org/10.1080/09603123.2020.1777948)
- O'Kane G. **Climate change and rural health**. Aust J Rural Health. 2020;28(2):186. [doi:10.1111/ajr.12614](https://doi.org/10.1111/ajr.12614)
- Buse CG, Patrick R. **Climate change glossary for public health practice: from vulnerability to climate justice** [published online ahead of print, 2020 Jul 3]. J Epidemiol Community Health. 2020;jech-2020-213889. [doi:10.1136/jech-2020-213889](https://doi.org/10.1136/jech-2020-213889)
- Harrison S, Macmillan A, Rudd C. **Framing climate change and health: New Zealand's online news media** [published online ahead of print, 2020 Jan 31]. Health Promot Int. 2020;daz130. [doi:10.1093/heapro/daz130](https://doi.org/10.1093/heapro/daz130)
- Kwon HJ. **Climate Change and Health: More Research Is Still Needed**. J Prev Med Public Health. 2020;53(1):1-2. [doi:10.3961/jpmph.20.005](https://doi.org/10.3961/jpmph.20.005)
- Palinkas LA, Wong M. **Global climate change and mental health**. Curr Opin Psychol. 2020;32:12-16. [doi:10.1016/j.copsyc.2019.06.023](https://doi.org/10.1016/j.copsyc.2019.06.023)
- Martin G, Reilly KC, Gilliland JA. **Impact of awareness and concerns of climate change on children's mental health: a scoping review protocol**. JBI Evid Synth. 2020;18(3):516-522. [doi:10.1124/JBISIR-D-19-00253](https://doi.org/10.1124/JBISIR-D-19-00253)
- Salvador C, Nieto R, Linares C, Díaz J, Gimeno L. **Effects of droughts on health: Diagnosis, repercussions, and adaptation in vulnerable regions under climate change. Challenges for future research**. Sci Total Environ. 2020;703:134912. [doi:10.1016/j.scitotenv.2019.134912](https://doi.org/10.1016/j.scitotenv.2019.134912)
- Sweilhe WM. **Bibliometric analysis of peer-reviewed literature on climate change and human health with an emphasis on infectious diseases**. Global Health. 2020;16(1):44. Published 2020 May 8. [doi:10.1186/s12992-020-00576-1](https://doi.org/10.1186/s12992-020-00576-1)

Highlights

The Australian Bushfire and Climate Plan, developed with more than 150 experts and affected community members at the National Bushfire and Climate Summit 2020, provides a broad plan and practical ideas for governments, fire and land management agencies and communities to help us mitigate and adapt to worsening fire conditions. The plan's 165 recommendations include many measures that can be implemented right now, to ensure communities are better protected. A key recommendation is to "develop and implement a national climate change, health and well-being strategy". Read more [here](#).

In [this MJA Insight article](#), Tony Capon and Fiona Armstrong explain how **Australia has an opportunity to invest in a healthy, green and fair recovery to tackle inequality, contribute its fair share of the global task of tackling climate change, and secure population health and wellbeing**.

Webinar recordings

2020 will be defined as the year that physical and mental health led the agenda and headlines, from bushfire smoke, to COVID19 and economic recession. The interface between these crises, sustainability, climate change and health must be considered. Listen to [this Sydney Ideas webinar](#).

Fiona Armstrong was part of an expert panel discussing **'The Domino Effect: Climate Change and Pandemics'**, presented by The Conversation, The Bob Hawke Prime Ministerial Centre and the Embassy of France in Australia. Watch the video recording [here](#).

[This panel](#) focuses on **key, implementable responses for lessening the impacts of heatwaves** – low-cost personal strategies to keep cool, housing design to keep the heat out, and neighbourhood and local council strategies to counter the heating of suburbs. In discussion are straightforward policy suggestions to keep the most vulnerable among us safe as climate change heats our cities.

The US-based National Institute of Environmental Health Sciences held their fourth annual Global Environmental Health Day event: **"Science at the Cutting Edge of Global Environmental Change and Health"**. Watch their series climate, environment and health [here](#).



THE UNIVERSITY OF SYDNEY

Copyright © 2020. The University of Sydney, NSW 2006 Australia
Phone +61 2 9351 2222 ABN 15 211 513 464 CRICOS Number: 00026A

Please add sinead.boylan@sydney.edu.au to your address book or senders safe list to make sure you continue to see our emails in the future.

[Unsubscribe](#)

View this email [online](#).

[Disclaimer](#) | [Privacy statement](#) | [University of Sydney](#)

Keep in touch



[Subscribe](#) to our email list.