

NURSE-LED IMPROVEMENTS TO THE SAFETY AND QUALITY OF NURSING CARE FOR HOSPITAL PATIENTS

HIRAID® INPATIENT



What is HIRAID®?

- History, including Infection risk, Red flags, Assessment, Interventions, Diagnostics, reassessment and communication
- An evidence-based framework to support nurses assess and manage patients.
- Originally developed for emergency nurses has been adapted for Aged Care and now...

Responding to sector demand, a standardised, ‘whole-of-patient’ nursing framework for hospital inpatients - **HIRAID® Inpatient** - will be designed to support nurses in optimal patient assessment and escalation of care of deteriorating patients.

How will HIRAID® Inpatient be implemented?

Phase 1 CO-DESIGN AND ADAPTION

Co-design of HIRAID® for inpatient wards with end users (including ward nurses, doctors, consumer representatives, allied health staff and managers).

Phase 2 IMPLEMENTATION STRATEGY

Mixed method study using staff surveys and focus groups to develop an evidence-informed implementation strategy for sustained behaviour change that is feasible for use by medical and surgical ward nurses.

Phase 3 IMPLEMENTATION AND EVALUATION

Type II effectiveness-implementation hybrid study assessing HIRAID® impact on patient, staff and health service outcomes via a step-wedge cluster RCT in 35 wards, 10 hospitals.

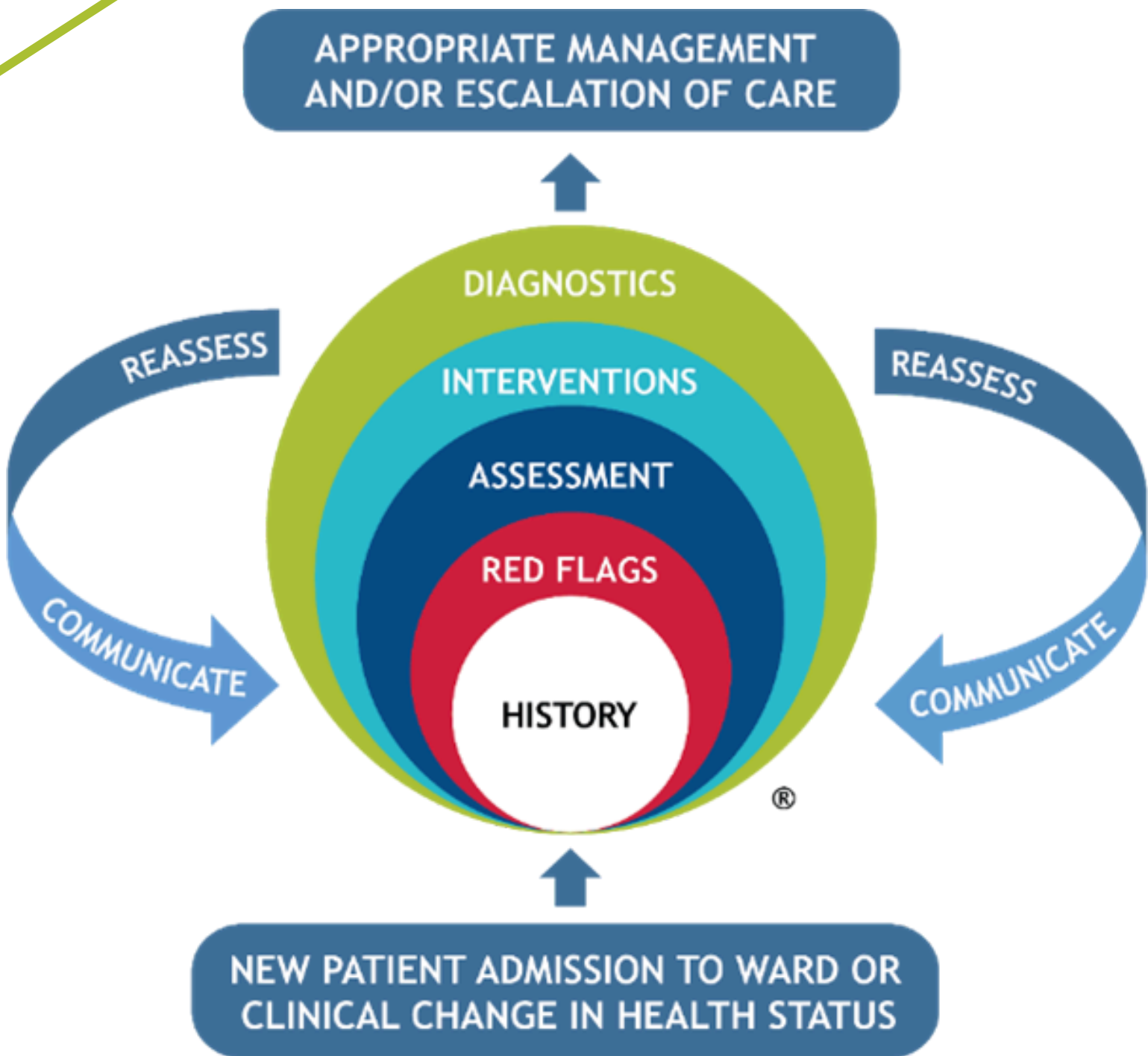
Why do we need HIRAID® Inpatient?



Preventable adverse events in Australia’s hospitals are a major safety issue.

In 2021-2022, 608,995 of Australia’s hospital patients experienced an adverse event that led to unintended harm or death, costing an extra \$4.1 billion.

Over half of these events are preventable and involve nurses’ inadequate prevention, recognition, or response to clinical deterioration.



What are the expected outcomes from implementing HIRAID® Inpatient?

20% Reduction in preventable patient deterioration and rapid response team reviews

10% Reduction in Hospital Acquired Complications (HAC03 and HAC06)

20% Reduction in events causing patient harm or near miss

10% Improvement in experience of care reported by patient or carer

10% Increase in quality of nurse communication and handover

NURSE UNIT MANAGERS

- ✓ Contribute to the adaptation and co-design
- ✓ Participate in focus groups
- ✓ Complete surveys
- ✓ Facilitate and support your nurses to attend training and apply the framework in practice

NURSES

- ✓ Engage in co-design via focus groups and surveys
- ✓ Attend training
- ✓ Use HIRAID® in clinical practice - all supported and during worktime

What does the HIRAID® Inpatient study mean for me?

- ✓ Participate in the framework adaptation
- ✓ Complete surveys

OTHER STAFF (Doctors, Allied health)

- ✓ Contribute to the co-design process
- ✓ Complete surveys

PATIENTS AND CARERS

- ✓ Collaborate on the design of HIRAID® Inpatient
- ✓ Support nurse training and implementation at the ward level
- ✓ Provide performance unit data
- ✓ Enable research governance processes

HOSPITALS



Australian College of Nursing



Western Sydney and Illawarra Shoalhaven Local Health Districts

AUSTRALIAN COMMISSION ON SAFETY AND QUALITY IN HEALTH CARE



Eastern Health



Thyne Reid Foundation

