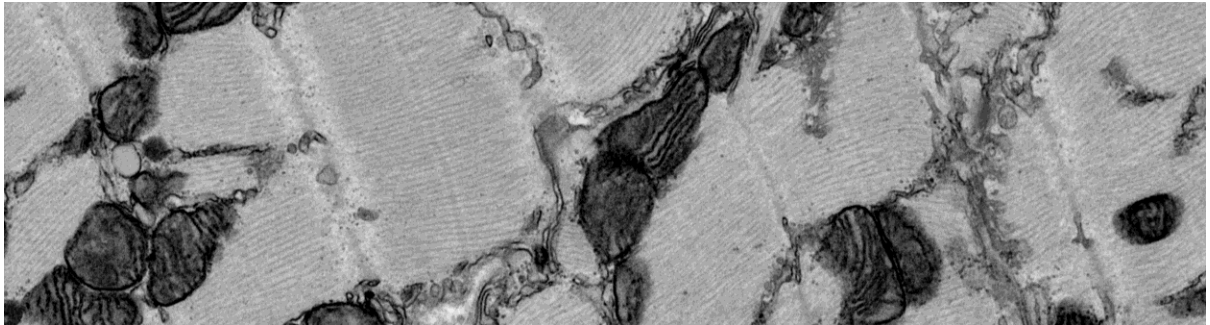




Sydney Microscopy & Microanalysis 2023 Fee Schedule



University of Sydney users:

- \$50 per hour (up to 8 consecutive hours per session per instrument)
- \$12.50 per hour (each consecutive hour over 8 hours per session per instrument)
- \$4 per hour for specimen preparation and image analysis equipment

Individual user cap of \$1,800 per calendar year*

* Except where an individual has multiple Supervisors in a calendar year

User cap excludes: \$300 one-off registration fee for new users
 \$200 per hour for staff instrument operation
 3View Serial Block Face Scanning Electron Microscope

External users (excludes GST):

Registration fee of \$300 per new user

Category	Instruments p/hr 0-8hrs	Staff p/hr
Australian Publicly Funded Research Agencies (PFRA)	\$150	\$200
Commercial	\$350	\$200

After 8 hours the hourly instrument rate drops to 25% of the listed rate for remainder of session

Sydney Analytical

Standard rates for users from other Universities, publicly-funded research organisations, and charities.

Contact us for further information:

Email | sydney.analytical@sydney.edu.au

Phone | +61 2 8627 6903

Web | sydney.edu.au/sydney-analytical

Instrument rates

Vibrational spectroscopy

Infrared and Raman spectrometers	\$ 130 / hour	🕒
Portable spectrometers & Innova AFM	\$ 65 / hour	➔

X-ray spectroscopy

X-ray or ultraviolet photoelectron spectroscopy (XPS/UPS)	\$ 130 / hour	🕒
X-ray fluorescence	\$ 65 / hour	
Portable XRF and Artax	\$ 65 / hour	➔

Magnetic Resonance

NMR 200 - 500 MHz	\$ 10 / hour
NMR 600 MHz	\$ 20 / hour
NMR 800 MHz	\$ 30 / hour
Electron paramagnetic resonance	\$ 20 / hour

X-ray diffraction

Powder diffractometers, including controlled environment accessories	\$ 65 / hour	🕒
Single Crystal X-ray Diffraction (SCXRD)	\$ 26 / hour	

X-ray and light scattering

Small- and wide-angle X-ray scattering (SAXS/WAXS)	\$ 130 / hour	🕒
Malvern Nanosight or Zetasizer	\$ 26 / hour	

Drug Discovery

AKTA Purifier	\$ 80 / hour
General equipment charge	\$ 16 / hour

Thermal analysis

Phoenix DSC or Jupiter STA	\$ 50 / hour
----------------------------	--------------

Notes

➔ Long-term rates for portable instruments: \$440/day; \$2000/week

🕒 Extended bookings of longer than 8 hours will have subsequent hours charged at 25% of the standard rate

Volume discounts

Sydney Analytical offers generous discounts for large volumes of work:

33% discount on instrument usage beyond 50 hours

50% discount on instrument usage beyond 350 hours

Training & Services

Training

Training in operation of equipment & data analysis for vibrational spectroscopy and X-ray techniques \$130 per person per instrument

Drug Discovery technique training \$80/hour. Training for small groups can be integrated into projects for a 20% surcharge.

We also periodically run courses covering technique basics, sample preparation and data analysis.

Vibrational spectroscopy, X-ray techniques & Magnetic Resonance

Staff assistance, including sample preparation and data analysis. \$100/hour (short periods of assistance are not charged)

Drug Discovery

Protein production & characterisation, protein NMR, metabolomics NMR and SPR services Contact us for a quote

Primary fragment-based drug screen and validation \$15,000

Cyclic peptide ligand screen \$ 6,000

Sample preparation

Hard material cutting and polishing Contact us for a quote

Rock thin sections Contact us for price list

Staff acknowledgement

If facility staff have been involved in data analysis, structure solution or refinement, it is expected that they will be co-authors on any publication arising from the experiment.

Arrangements for collaborators

External academics who are joint Chief Investigators on Category 1 grants are offered *internal rates* for work funded by the grant, but do not qualify for the group fee cap.

Joint Chief Investigators on LIEF grants (or similar equipment grants) are offered the same arrangement for work using the equipment covered by the LIEF grant for a period of up to three years.

January 2023

Sydney Analytical

Standard rates for University of Sydney students, staff, and affiliates on internal or grant funding.

Instrument rates (eligible for cap)

Vibrational spectroscopy

Infrared and Raman spectrometers	\$ 50 / hour	🕒
Portable spectrometers & Innova AFM	\$ 25 / hour	→

X-ray spectroscopy

X-ray or ultraviolet photoelectron spectroscopy (XPS/UPS)	\$ 50 / hour	🕒
X-ray fluorescence and Artax	\$ 25 / hour	→

Magnetic Resonance

NMR 200 - 500 MHz	\$ 5 / hour
NMR 600 MHz &	\$ 10 / hour
NMR 800 MHz	\$ 15 / hour
Electron paramagnetic resonance	\$ 10 / hour

X-ray diffraction

Single crystal X-ray diffractometers	\$ 10 / hour	🕒
Powder diffractometers	\$ 25 / hour	🕒

X-ray and light scattering

Small- and wide-angle X-ray scattering	\$ 50 / hour	🕒
Malvern Nanosight or Zetasizer	\$ 10 / hour	

Drug discovery

AKTA Purifier	\$ 50 / day
General equipment charge	\$ 10 / hour

Thermal analysis

Phoenix DSC or Jupiter STA	\$ 25 / hour
----------------------------	--------------

Notes:

- Long-term rates for portable instruments: \$ 200/day; \$1000/week
- 🕒 Extended bookings of longer than 8 hours will have subsequent hours charged at 25% of the standard rate

User Access Scheme

Grants of up to \$5000 of instrument time are available on a competitive basis to University of Sydney users without alternate sources of funding. Please enquire for details.

<https://sydney.edu.au/research/facilities/user-access-scheme.html>

Staff acknowledgement

If facility staff have been involved in data analysis, structure solution or refinement, it is expected that they will be co-authors on any publication arising from the experiment.

Research Group Caps for instrument time: \$5,000 per calendar year

for research groups with up to 5 members. The caps increase by \$250 per additional group member. Conditions apply (see notes)

Cap #1 \$5,000 Covers all Sydney Analytical equipment except Magnetic Resonance

Cap #2 \$5,000 Magnetic Resonance spectrometers only

Training & Services

Training

Training in operation of equipment & data analysis for vibrational spectroscopy, X-ray techniques and magnetic resonance. \$50 per person per instrument, up to a training cap of \$400 per group

Drug Discovery technique training \$50/hour. Training for small groups can be integrated into projects for a 20% surcharge.

We also periodically run courses covering technique basics, sample preparation and data analysis.

Vibrational spectroscopy, X-ray techniques & Magnetic Resonance

Staff assistance, including sample preparation and data analysis. \$100/hour (short periods of assistance are not charged)

Drug Discovery

Protein production & characterisation, protein NMR, metabolomics NMR and SPR services	Contact us for a quote
Primary fragment-based drug screen and validation	\$15,000
Cyclic peptide ligand screen	\$ 3,000

Sample preparation

Hard material cutting and polishing	Contact us for a quote
Rock thin section	Contact us for price list

Notes on the Group Cap for instrument time:

- Charges for consumables and staff time are not capped and do not contribute to the cap.
- Application of the cap is contingent on approval from the Academic Director. Please contact Sydney Analytical and arrange a meeting with the Academic Director to discuss outcomes from the access that has been provided to date.
- The group size includes all research staff, students (HDR and Honours) and long-term visitors under the supervision of the named academic, averaged over the calendar year, regardless of whether they are using Sydney Analytical Facilities.
- Where grants are shared, then the charges can be contributed equally between the CIs on request.
- Free instrument time provided via the User Access Scheme does not contribute to this cap.

Contact us for further information:

Email | sydney.analytical@sydney.edu.au

Phone | +61 2 8627 6903

Web | sydney.edu.au/sydney-analytical

Sydney Informatics Hub Rate Sheet - 2023

SIH Research Support Service	Internal# (i.e. Payable by journal transfer only)	Other Universities & Publicly Funded Research Organisations (excluding GST)	SKH (excluding GST)	Commercial	Additional Information
Project support (2 days to 12 weeks)**	\$3,500/week*	\$6000/week*	\$6000/week*	Contact SIH for a custom quote	Formal scoping by SIH required. Request assistance: Request support
Project Management Overheads (for above projects)	\$350/week* (in-kind)	\$600/week*	\$600/week*	Included in custom quote	
Project Support Total	\$3,500/week*	\$6,600/week*	\$6,600/week*	Custom quote	
One-off short support (up to 2 days/project)	Dependent on staff availability – no charge	N/A	N/A	N/A	Request assistance: Request support
SIH Project Scheme: (Up to 5 weeks* in-kind support per scheme - awarded on merit)	Value: \$3,850/week* (in-kind)	N/A	N/A	N/A	Awarded on merit. Limited number of projects. For application eligibility and details see: SIH Schemes
Statistical consulting: 1-2 hour consult	Free to Researchers and Research students	N/A	N/A	N/A	Request assistance: Request support
Scheduled Training Courses / Workshops	Free to Researchers and Research students Bookings required Numbers limited	N/A	N/A	N/A	See: Workshops and Training
Custom training courses / workshops	Dependent on staff availability – see rates below				

SIH University of Sydney Custom Workshop Internal Rates			
Workshop Length (days)	Number of SIH Instructors	Number of Attendees	Internal (Payable by journal transfer only)
½	1	10 or less	\$760
½	2	11 to 20	\$1,260
½	3	21 to 30	\$1,660
1	1	10 or less	\$1,520
1	2	11 to 20	\$2,520
1	3	21 to 30	\$3,320
2	1	10 or less	\$3,040
2	2	11 to 20	\$5,040
2	3	21 to 30	\$6,640
Other Universities and Publicly Funded Research Organisations rates: 2 x Internal rates (plus GST)			
Commercial rates: 3 x Internal rates (plus GST)			

*week is equivalent to 35 hours of SIH research support services

**Longer engagements by arrangement only. Further fees will apply.

“In-kind” (i.e. no charge to researcher) indicates ‘value only’ of services.

#Grant applications: This pricing is provided as a guide for preparation of grant applications where the SIH support level required for your project is well understood. For assistance with scoping and quotes for SIH support services for your grant application please contact SIH no less than 2 weeks prior to the grant application closure date at: sih.info@sydney.edu.au

Note: These rates will apply for Sydney Informatics Hub quotes starting from 21st November 2022 (with the support services quoted generally expected to be delivered in 2023).

Sydney Manufacturing Hub – Rates 2023

Please contact smh.info@sydney.edu.au to discuss your project

Instrument	Cost (Internal Users)
GROUP 1 EQUIPMENT	
Furnaces	\$10/hour
Salt baths	
Oil baths	
Extruders (Polymers lab)	
Vickers Hardness Tester	
WASP paste printer	
Pre & Post Fabrication Equipment	
High End Desktop machines	
Powder Characterisation Equipment – PowderFlow (CarneyFlow), GranuDrum	
Grinder (specimen preparation)	
3D Polymer Printers – AON M2+, Intamsys Funmat HT, Formlabs 3B, Phrozen Mega 8K, Phrozen Mini 8K, BMF S240, 3D Platform Large Format, Prusa	
GROUP 2 EQUIPMENT	
3D Metal Printers- Mlab, M2, A2X & SpectraH	\$40/hour
3D Ceramic Printer – CeraFab 7500	
<i>*The base rate for heat treatment of ceramic parts will be capped at \$200</i>	
Nanoindentation System	
Induction Casting Unit	
3D Confocal Microscope	
Arc Melter	
EDM	
Additional cost	
Technical Staff Assistance	\$100/hour
Consumables – Metal powders, ceramic slurry, polymer resins and filaments will be charged to the researcher per weight/volume used	Quotation Required- Contact Facility
TRAINING	
Training fee for Equipment	\$50 per session (from 2-6 sessions depending upon equipment)



USER CAPS	
Individual user cap (applicable for internal staff only) <i>Not included in the cap: Staff time, Consumables & Training</i>	\$1700/calendar year
External Academic rates: 2x Base Internal Rate for Equipment \$100 an hour for staff time Consumables at cost \$50 per session Training fee (from 2-6 sessions depending upon equipment)	
External Commercial Rate: 3 x Base Internal rate for equipment (<i>This is valid for all equipment except for the 3D Ceramic Printer – CeraFab7500 for which the commercial rate is \$350/hour</i>) \$200 an hour for staff time Consumables at cost Training Fees- contact facility for quotation	

Sydney Mass Spectrometry

The University of Sydney Price List

- Registration (inc. training)
 - 2D Gel Course \$300
 - Mass Spectrometry \$500
- Bench Fees
 - IEF Cells & large gel tanks \$1/hr
 - LC systems from \$1/hr
 - LCMS & MS Imaging systems \$10/hr
- Consumables
 - ZipTips \$250/box
 - ABGene 96 well plates \$7.50
 - PCR strips (8 tubes) inc seal \$2
 - Indium Tin Oxide Slides \$15
 - Vials (box of 100) \$110
- Contract Research
 - Sample clean up \$35/sample
 - MALDI TOF Analysis (inc Peptide Mass Fingerprinting, Deuteration and Intact Protein Mass) \$80/sample
 - 1D LCMS (protein identification in simple mixtures or intact protein mass) \$120/sample
 - Mass Spec Imaging (lipids) \$500/slide
 - Mass Spec Imaging (peptides) \$750/slide
 - Plasma Targeted Metabolomics \$120/sample
 - Quantitative Proteomics \$750/sample
- Please contact us for a quote for 2D gel analysis, discovery metabolomics and other services.
- Not USyd? See next page for external rates.



Sydney Mass Spectrometry

External (Academic) Price List

- Registration (inc. training)
 - 2D Gel Course \$300
 - Mass Spectrometry \$500
- Bench Fees
 - IEF Cells & large gel tanks \$2/hr
 - LC systems from \$2/hr
 - LCMS & MS Imaging systems \$25/hr
- Consumables
 - ZipTips \$250/box
 - ABGene 96 well plates \$7.50
 - PCR strips (8 tubes) inc seal \$2
 - Indium Tin Oxide Slides \$15
 - Vials (box of 100) \$110
- Contract Research
 - Sample clean up \$50/sample
 - Deuteration Analysis \$80/sample
 - MALDI TOF Analysis (inc Peptide Mass Fingerprinting and Intact Protein Mass) \$120/sample
 - 1D LCMS (protein identification in simple mixtures or intact protein mass) \$180/sample
 - Plasma Targeted Metabolomics \$180/sample
 - Mass Spec Imaging (lipids) \$750/slide
 - Mass Spec Imaging (peptides) \$1125/slide
 - Quantitative Proteomics \$1125/sample
- Please contact us for a quote for 2D gel analysis, discovery metabolomics and other services.
- Commercial? Please contact us for quote.



Sydney Cytometry 2022 (internal users)

Sydney Cytometry			
Instrument	Cost/hour (unassisted)	Cost/hour (operator assisted)	Notes
Cell sorter: basic (2 lasers)	\$36	\$80	FACSJazz
Cell sorted: advanced	\$54	\$95	FACSAria IIu, Influx, FACSMelody
Sort set up	\$48		"flag-fall" each session
Cytometers: basic (<4 lasers)	\$36	\$80	FACSCantoll, FACSVerse, Aurora (3 laser)
Cytometers: advanced (>4 lasers)	\$54	\$95	LSRFortressa, LSRFortressa X-20, LSR II 5L, LSR X, Aurora (5 laser)
Image Cytometer: plates	\$35	\$80	PE Opera Phenix. Rebates apply after first 6 hours of continuous use
Image Cytometer: ImageStream	\$50	\$95	Imagstream XmkII
Mass Cytometer - Suspension	\$60	\$100	
Mass Cytometer - Imaging	\$60	\$100	
Additional operator assistance		\$50	
AutoMACS Pro	\$30	\$80	
Analysis Computers	\$4	\$54	
Group Training (per person, per hour)		\$30	
Individual training		\$50	
<i>Software maintenance fees (including FlowJo, Imaris, Volocity) will be charged on a usage basis</i>			
<i>Used vs booked time reconciliation will be applied to all instruments (ie user will be charged the longer of the two (unless someone else uses some of the time)</i>			
<i>A charge of 50% of usage rate will be applied to late cancellation of bookings (where the slot has not been used by someone else). Cut off time will be set at 12 hours</i>			
<i>External Academic rates = 2x Base Internal Rate</i>			
<i>External Commercial Rate = 3x Base Internal Rate</i>			

Note: These rates are currently under review for 2023.



Sydney Imaging 2022 Internal User Costs	
PRECLINICAL	
3T MRI	\$300pp registration fee, then \$200 per hour*#
7T MRI	\$300pp registration fee, then \$200 per hour*#
3T PET/MRI	\$300pp registration fee, then \$200 per hour*#
IVIS Spectrum	\$100pp registration fee, then \$50 per hour \$50 per hour technical assistance fee
VisualSonics Ultrasound and Photoacoustic (Vevo2100 + VevoLAZR, Vevo3100 + LAZR-X)	\$100pp registration fee, then \$50 per hour \$50 per hour technical assistance fee
3D microCT	\$100pp registration fee, then \$50 per hour \$50 per hour technical assistance fee
echoMRI	\$20pp registration fee, then \$20 per hour \$50 per hour technical assistance fee
Dual-Energy X-ray Absorptiometry (DXA)	\$40pp registration fee, then \$40 per hour \$50 per hour technical assistance fee
Computer Analysis Computer/VRD	\$2 per hour
Note: costs will be calculated based on 30-minute blocks (e.g. 20 min of usage will be charged as 30 min).	
* Includes technical staff support	
# Tracer and/or contrast consumables are an additional cost	
HYBRID THEATRE	
Please contact us for a bespoke quote for Hybrid Theatre projects.	

Note: Pricing under review for 2023