

Sydney Manufacturing Hub



Delivering world-class capabilities in additive manufacturing and materials processing.



Powering Innovation and Transforming Manufacturing

Sydney Manufacturing Hub (SMH) is an advanced manufacturing research facility at the University of Sydney.

With our colleagues working in material and mechanical characterisation, we can provide a fully integrated approach to manufacturing R&D and support you at any stage of your industry project.

Do you want to explore an advanced manufacturing solution to a project or problem?

We are a fully operational early TRL facility and can assist with designing, prototyping and proof-of-concept, testing and validating, up to short-run production.

We welcome you to visit our facilities and to discuss your project.

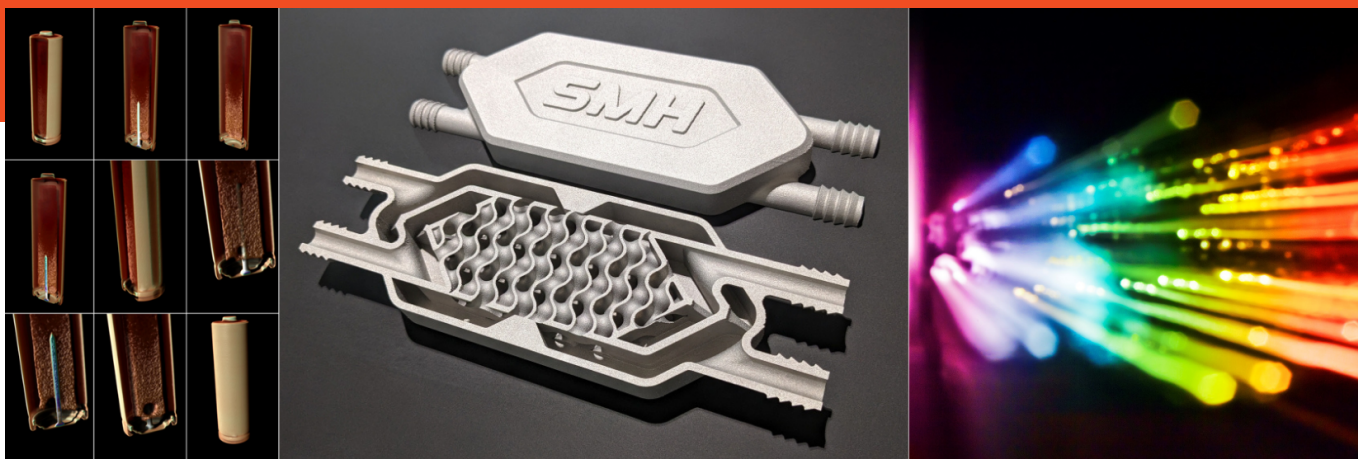
We are ready to partner with industry, providing access to our **capabilities** and **expertise** in areas of:

- Product design and engineering
- Reverse engineering
- Material development
- Additive manufacturing (3D printing) of metals, ceramics, polymers and composites
- Heat treatment
- Precision machining
- Conformity inspection operations
- Material characterisation (failure analysis, defect characterisation, chemical composition)
- Material analysis (residual stress measurement, chemical mapping, thermal analysis)
- Mechanical property testing (statics, dynamics, fatigue, creep, impact, bi-axial)
- Physical property testing (conductivity, electronic, magnetic and optical)
- Corrosion and wear testing

We can engage on a fee-for-service basis, alternatively you may be able to access our facility and equipment directly.

Contact us here to see how to collaborate with us!

✉ smh.info@sydney.edu.au



For more information about our facilities use the QR codes

Sydney Manufacturing Hub



Centre for Advanced Structural Engineering Laboratory



Sydney Microscopy and Microanalysis



Advanced Materials Facilities



Sydney Analytical



View SMH capabilities brochure

