

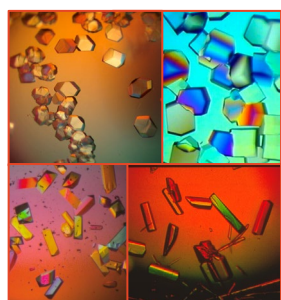


THE UNIVERSITY OF  
**SYDNEY**

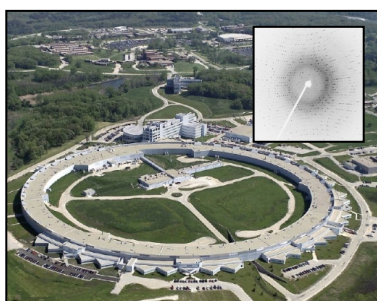
# Sydney Analytical Macromolecular crystallography

Sydney Analytical provides expertise and access to advanced equipment to facilitate macromolecular crystallography. This includes a Perkin Elmer Janus liquid handler and crystallization robotics with our Mosquito<sup>®</sup> LCP (sptlabtech). These enable the automated setting of crystallization screens with hanging drop, sitting drop, additive, and seeding methods, as well as Lipidic Cubic Phase (LCP) experiments for membrane protein crystallisation.

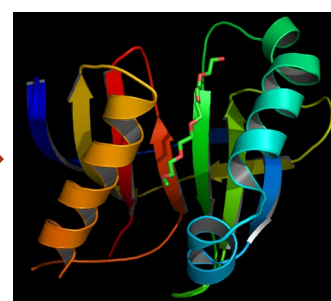
We have access to the Australian Synchrotron x-ray facility through the Collaborative Access Program (CAP) which allows for the screening and data collection for crystals. We also provide training to users on crystal screen set-up, crystal optimization as well as remote x-ray data collection at the Australian Synchrotron.



**Crystallisation Screening**



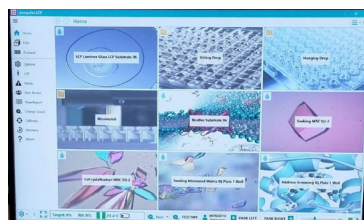
**Data Collection  
at the Australian Synchrotron**



**Structure Solution**



**Janus Standard 8-Tip Varispan (Perkin Elmer)**



**Mosquito LCP (sptlabtech)**

## SERVICES PROVIDED

- ❖ Commercial crystallization screens
- ❖ Crystallization incubators
- ❖ Microscopes for crystal viewing
- ❖ Crystal cryo storage and shipping
- ❖ Remote x-ray data collection at the Australian Synchrotron
- ❖ Data collection and structure determination
- ❖ Crystallization and structure solution training



**To request more information  
or for instrument training,  
please contact us:**

[sydney.analytical@sydney.edu.au](mailto:sydney.analytical@sydney.edu.au)

+61 2 86276903