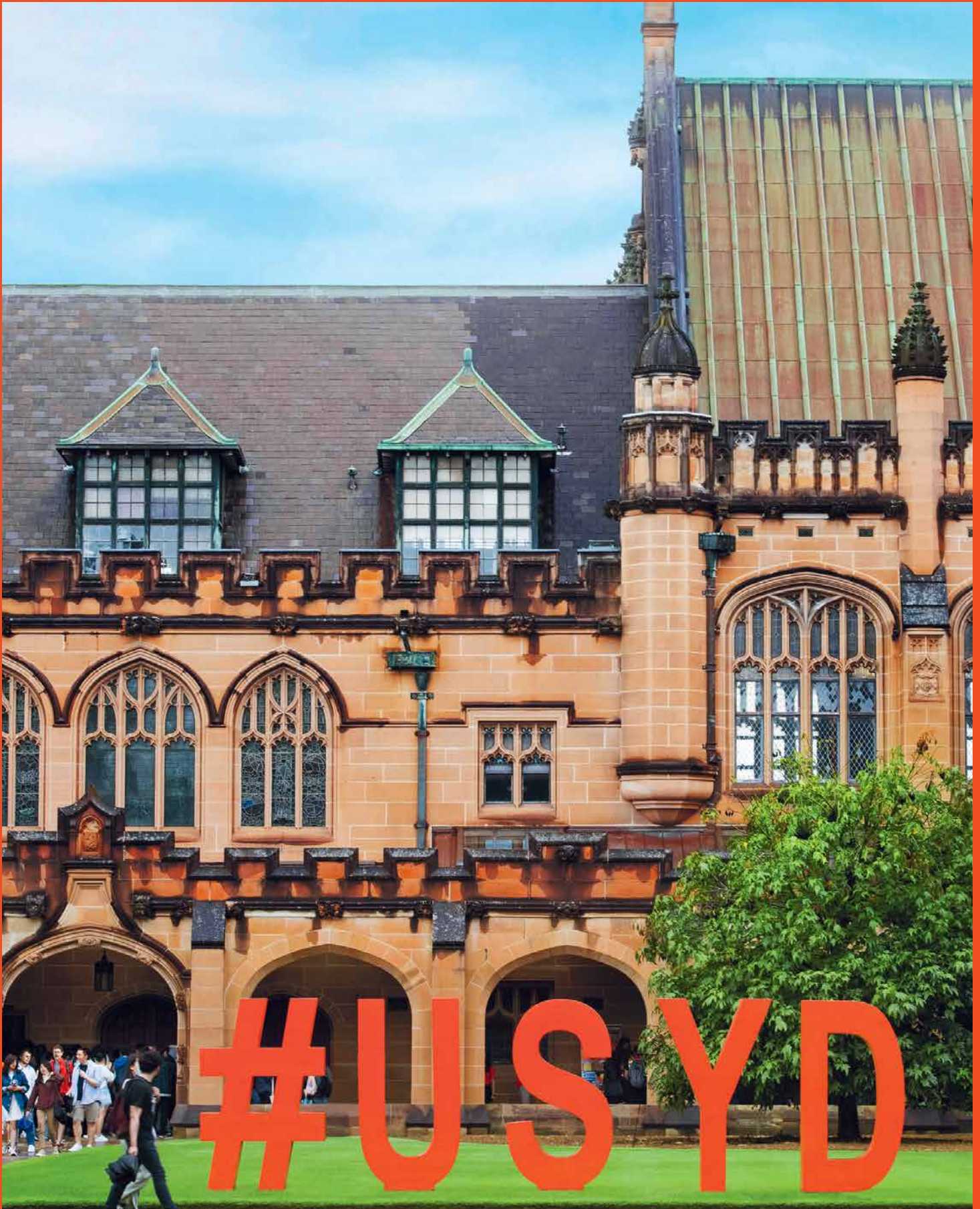


Year 10
Guide 2023
for domestic students



THE UNIVERSITY OF
SYDNEY



We acknowledge the tradition of custodianship and law of the Country on which the University of Sydney campuses stand. We pay our respects to those who have cared and continue to care for Country.

Why choose *Sydney*?

Design your own degree

We provide opportunities to follow your passions and combine your interests, with the option to choose from over 400+ study areas.

Land your dream job

Our strong rankings and reputation set our graduates apart. We are ranked 1st in Australia and 4th in the world for graduate employability*, and are in the top 40 in world university rankings.**

Make the world your campus

We have one of the largest mobility programs in Australia and over 250+ international partners, making it easy for you to travel while you study.

Find your crew

Meet like-minded people, expand your networks and make friends by joining one of our 250+ clubs and societies.

Score a scholarship

We have over \$135 million in scholarships and prizes available to our students each year.

* QS Graduate Employability Rankings 2022

** QS World University Rankings 2022



Uni 101

High school



Uni

Start and finish at the same time,
Monday to Friday

Learn in the classroom

Teacher-directed study

Four school terms

Spend all day at school

Start and finish at different times
each day, Monday to Friday

Learn in lectures, tutorials, labs, design studios,
workshops, field research and more

Independent learning and self-directed study

Two university semesters: late February to
late June; early August to late November

Your daily schedule is determined by your subject
choices and/or degree, giving you more freedom
and control over how you spend your time

LEARN THE LINGO

To view
more Year 10
resources
and a full
glossary



BACHELOR When you start university after high school, you will apply for an undergraduate (bachelor's) degree. These are at least three years long.

ENROLMENT Enrolment is the process that secures your place in a course at the University. It includes accepting the University's conditions of being a student and selecting units of study for the coming semester or year.

UNIT The individual subjects you take each semester are referred to as 'units' or 'units of study'. Each unit has assessments and exams. When you pass these, you progress to the next stage of your degree.

MAJOR A major is a sequence of subjects, also known as 'units of study', that develop depth of expertise in a field of study. A major is usually made up of 8 units of study. For example, you may choose to complete a major in criminology, marketing or microbiology.

C	C	M	E	T	N	F	N	B	A	C	H	E	L	O	R	T	C	E	E	N	N
V	E	S	E	W	E	O	D	M	H	F	O	B	M	M	M	I	R	A	D	R	A
S	S	B	H	N	E	R	A	N	I	U	V	I	P	U	S	F	O	U	U	S	D
E	K	E	R	Y	V	J	Y	N	O	L	F	A	O	F	L	E	N	H	E	O	N
P	S	H	N	T	O	I	M	I	S	L	R	T	F	T	F	V	T	E	W	E	A
R	H	U	E	R	S	O	H	E	P	T	E	A	A	Y	N	A	A	S	E	N	R
E	F	E	D	E	O	M	M	L	T	I	R	H	I	G	H	R	C	H	T	E	T
R	M	E	O	P	S	L	O	I	H	M	L	T	A	L	N	P	A	U	A	T	E
E	W	U	E	O	U	C	M	O	N	E	B	E	U	U	F	S	A	H	L	O	F
Q	E	N	B	M	I	E	A	E	L	O	O	O	G	N	N	O	N	O	P	T	R
U	A	D	T	E	D	U	D	O	N	I	R	K	E	U	U	E	A	E	A	D	Y
I	N	A	E	S	E	D	M	D	O	T	D	A	E	S	W	O	V	O	S	E	T
S	D	I	D	C	E	A	E	I	O	A	F	I	S	P	L	N	T	S	T	R	W
I	L	A	T	O	N	H	S	T	N	P	M	W	I	T	E	T	A	N	E	T	S
T	R	L	E	I	V	T	D	E	E	I	N	Y	T	U	I	H	O	T	E	D	V
E	K	E	U	R	H	T	C	D	A	H	N	A	A	R	L	S	R	T	I	L	A

MINOR Similar to a major, a minor is a set of subjects, taken sequentially, that are designed to develop expertise in a particular study area. In comparison to a major, you would study fewer units of study (usually 6). A full list of majors and minors can be found for each degree on our courses website:
sydney.edu.au/courses

PREREQUISITE Prerequisites are subjects you need to complete at the required standard to be eligible for admission.

PART-TIME OR FULL-TIME STUDY

Studying full-time or part-time depends on how many units of study you take for the semester. If you choose to study part-time, you will have fewer hours in lessons or group activities, and it will take longer to finish your degree. Not all degrees are available part-time.

FACULTY A Faculty is a group of university departments or schools that teach a similar area of study, e.g. the Faculty of Science or Faculty of Medicine and Health.

Where do you start?

It's time to start thinking about your future and how studying your dream course at the University of Sydney can turn your interests into a career.

To get into some of our courses, you will need to choose certain subjects in Years 11 and 12, which are prerequisites for admission. In addition to prerequisites, many of our courses also have recommendations for assumed knowledge in certain subjects, which are not required for admission, but are related to the course and will be useful for you to complete. That's why it is important to start preparing now.



“There can be a lot of pressure and expectations other people have for you when graduating high school. My advice would be to try and work out the things you love, the path you wish to take, and to focus on your personal achievements and goals.”

Kawana Crowe
Bachelor of Science and
Bachelor of Advanced Studies (Advanced)

Start your journey early. Preparation is key.

→ Year 10

Join us for our Year 10 Info Evenings and begin exploring your options.



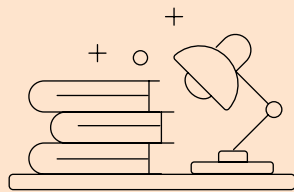
1. Look into career options and areas of study and consider whether you can see yourself doing any of these jobs.



2. Make a short list of the university courses that interest you and will set you on the right path towards your career goals.

6.

Keep up your extracurricular activities such as sports, performance and community involvement. This helps us get a better sense of the 'whole you', which is very important if you are applying for one of our scholarships or admission schemes.

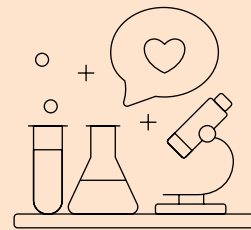


5.

Get into good study habits to prepare yourself to achieve strong results in Year 12.

4.

Take subjects you like and do well in at school. This is also a good way to determine your future career direction.



3.

Check the admission criteria and high school subjects required or advised for those courses, so you know what subjects to take in Years 11 and 12. These are referred to as 'prerequisites' and 'assumed knowledge'.

TAKE NOTE



→ Year 11

Visit a career expo to get the answers to your questions.



7.

Learn about how the Australian Tertiary Admission Rank (ATAR), is calculated and how subjects are scaled. sydney.edu.au/atar-explained



8.

Look at the entry requirements for your dream course. We offer Guaranteed Entry for most courses and list a guaranteed selection rank - ATAR + adjustment factors. Guaranteed Entry to a course is subject to meeting other essential admission criteria and the availability of places. Additional admissions criteria might include an audition, portfolio, interview, etc.



9.

This is the year to focus on doing well at school and get serious about your university choices.



10.

Research all the details of your chosen course, such as the admission requirements, prerequisites, assumed knowledge and the application process.



11.

Learn about some of your other university opportunities, including admission pathways, scholarships, overseas exchange, internships, and career support during your degree.



Things to note when selecting your subjects

PREREQUISITES VS ASSUMED KNOWLEDGE

Prerequisites are subjects you need to complete at the required standard to be eligible for admission. Many of our courses have a **mathematics prerequisite**.

For details, visit sydney.edu.au/study/maths or find your course at sydney.edu.au/courses

Some of our **education degrees** also have specific prerequisites. See sydney.edu.au/courses

For some courses, we recommend you to have achieved a certain level of knowledge in areas such as **mathematics, physics and chemistry** through your high school studies in order to successfully study at university level. We advise you to consider all the **assumed knowledge** when selecting your subjects.

For details, visit sydney.edu.au/hsc-subject-selection and sydney.edu.au/courses

Get ready for university!



Join us

at an event



YEAR 10 INFO EVENINGS

On campus

Wednesday 20 April

Wednesday 4 May

Online

Thursday 5 May

OPEN DAY

On campus

Saturday 27 August

sydney.edu.au/ug-events

Share the excitement

#USYD22 @Sydney_Uni



The information published in this guide is current at the time of publication and is subject to change for future years. For the latest course information, including admission criteria, course structure and availability, refer to: sydney.edu.au/courses

Produced by Marketing and Communications, the University of Sydney, March 2022. The University reserves the right to make alterations to any information contained within this publication without notice. CRICOS 00026A 22/8843