

Year 10 Guide

Domestic students

For Year 10 students in 2025



THE UNIVERSITY OF
SYDNEY

Celebrating **175** years



Why choose *Sydney*?

Design your own degree

At the University of Sydney, our degrees offer flexibility, allowing you to combine your interests across different subjects with more than 400 study areas available.

Get experience while you study

Practical and professional experiences are an integral part of all of our degrees. You can get involved with our highly sought-after placements, internships, research programs and projects.

Make the world your campus

We have the largest student exchange program in Australia with over 260 international partners, making it easy for you to travel as part of your study.*

Find your people

Immerse yourself in our vibrant student community and make friends by joining one of our 270+ clubs and societies.

Score a scholarship

We have over \$135 million in scholarships and prizes available to our students each year.

Become part of something bigger

We are ranked 18th in the world university rankings** and have over 430,000 graduates forming an influential worldwide network.

Find your pathway to your dream degree

There is more than one way to get into your course. We take your achievements, circumstances or abilities into consideration through our admission pathways.

* Australian Universities International Directors' Forum
Learning Abroad Benchmarking 2023 (in 2024)

** QS World University Rankings 2025



How uni works

High school

VS

Uni

Start and finish at the same time,
Monday to Friday

Learn in the classroom

Teacher-directed study

Four school terms

Spend all day at school

Start and finish at different times
each day, Monday to Friday

Learn in lectures, tutorials, labs, design studios,
workshops, field research and more

Independent learning and self-directed study

Two university semesters:
late February to late June;
late July/early August to late November

Your daily schedule is determined by your subject
choices and degree, giving you more freedom
and control over how you spend your time

Learn the lingo

How to
choose your
HSC subjects



BACHELOR When you start university after high school, you will apply for an undergraduate (bachelor's) degree. These are at least three years long.

ENROLMENT Enrolment is the process that secures your place in a course at the University. It includes accepting the University's conditions of being a student and selecting units of study for the coming semester or year.

UNIT The individual subjects you take each semester are referred to as 'units' or 'units of study'. Each unit has assessments and exams you must successfully complete to pass a unit of study.

MAJOR A major is a sequence of subjects that develop depth of expertise in a field of study. A major is usually made up of 8 units of study. A full list of majors and minors can be found for each degree on our website:

– sydney.edu.au/courses

C	C	M	E	T	N	F	N	B	A	C	H	E	L	O	R	T	C	E	E	N	N
V	E	S	E	W	E	O	D	M	H	F	O	B	M	M	M	I	R	A	D	R	A
S	S	B	H	N	E	R	A	N	I	U	V	I	P	U	S	F	O	U	U	S	D
E	K	E	R	Y	V	J	Y	N	O	L	F	A	O	F	L	E	N	H	E	O	N
P	S	H	N	T	O	I	M	I	S	L	R	T	F	T	F	V	T	E	W	E	A
R	H	U	E	R	S	O	H	E	P	T	E	A	A	Y	N	A	A	S	E	N	R
E	F	E	D	E	O	M	M	L	T	I	R	H	I	G	H	R	C	H	T	E	T
R	M	E	O	P	S	L	O	I	H	M	L	T	A	L	N	P	A	U	A	T	E
E	W	U	E	O	U	C	M	O	N	E	B	E	U	U	F	S	A	H	L	O	F
Q	E	N	B	M	I	E	A	E	L	O	O	O	G	N	N	O	N	O	P	T	R
U	A	D	T	E	D	U	D	O	N	I	R	K	E	U	U	E	A	E	A	D	Y
I	N	A	E	S	E	D	M	D	O	T	D	A	E	S	W	O	V	O	S	E	T
S	D	I	D	C	E	A	E	I	O	A	F	I	S	P	L	N	T	S	T	R	W
I	L	A	T	O	N	H	S	T	N	P	M	W	I	T	E	T	A	N	E	T	S
T	R	L	E	I	V	T	D	E	E	I	N	Y	T	U	I	H	O	T	E	D	V
E	K	E	U	R	H	T	C	D	A	H	N	A	A	R	L	S	R	T	I	L	A

MINOR Similar to a major, a minor is a set of subjects, taken sequentially, that are designed to develop expertise in a particular study area. In comparison to a major, you would study fewer units of study (usually 6).

PREREQUISITE Prerequisites are subjects you must complete at the required standard to be eligible for admission.

PART-TIME or FULL-TIME STUDY

Studying full-time or part-time depends on how many units of study you take for the semester. If you choose to study part-time, you will have fewer hours in lessons or group activities, and it will take longer to finish your degree. Not all degrees are available part-time.

FACULTY A faculty is a group of university departments or schools that teach a similar area of study, e.g. the Faculty of Science or Faculty of Medicine and Health.

Where do *you start?*

It's time to think about your future and learn how the University of Sydney can turn your interests into a career.



"I'm the first in my family to go to uni and it was a tricky process, particularly deciding to live away from home. But at the University of Sydney there were lots of scholarships and pathways for regional students... The University's rankings are so impressive. I was also drawn by the fact that I could study my passion, Art History, as a major."

Maeve Sullivan

Bachelor of Arts and Bachelor of Laws

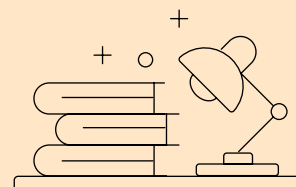
Start your
journey early.
Preparation
is key.

→ *Year 10*

Join us at one of
our **Year 10 Subject
Selection Evenings**
to begin exploring
your options.

6.

Maintain a healthy study-life balance with sports, hobbies and community involvement. These activities may also improve applications for some scholarships and entry schemes.



5.

Get into good study habits to prepare yourself to achieve strong results in Year 12.



→ *Year 11*



Visit a **career expo**
to find the answers
to your questions.

7.

Learn about how the Australian Tertiary Admission Rank (ATAR), is calculated and how subjects are scaled.





1.

Consider different career options and what job you can see yourself doing.



2.

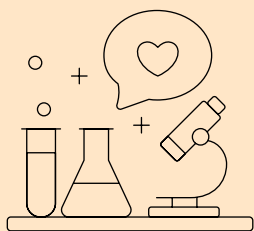
Make a short list of the university courses that interest you and match your career goals.

TAKE
NOTE



3.

Take note of any 'prerequisites' or 'assumed knowledge' listed for your courses. These can help you decide which subjects to take in Years 11 and 12.



4.

Choose subjects you like and do well in at school. This is also a good way to determine your future career direction.

→ Year 12



Don't miss Open Day
on Saturday 30 August

8.

Look at the entry requirements for your dream course. What ATAR should you aim for? Are there any prerequisites you must meet? Do you need to submit a portfolio or attend an interview?



9.

This is the year to get serious about your university choices. Remember to maintain a healthy study-life balance with your extracurricular activities.



10.

Consider the pathways you may take if you don't get the ATAR you need. Look into entry schemes and research scholarships you'd like to apply for.

Things to note when selecting your subjects

PREREQUISITES

VS

ASSUMED
KNOWLEDGE

Prerequisites are subjects you need to complete at the required standard to be eligible for admission. Some of our courses have a **mathematics prerequisite**.

For details, visit sydney.edu.au/study/maths

Some of our **education degrees** also have specific prerequisites. To check if you need to meet a prerequisite, visit sydney.edu.au/courses

For some courses, we expect you to achieve a certain level of knowledge in areas such as **mathematics, physics or chemistry** through your high school studies in order to successfully study at a university level. You can still receive an offer to a course if you do not meet the assumed knowledge.

For details, visit sydney.edu.au/hsc-subject-selection and sydney.edu.au/study/prerequisites

Get ready for
university!



11.

Double check the details of your courses and understand the application process. Most offers to university are made throughout December and January.

Join us

at an event



YEAR 10 SUBJECT SELECTION EVENINGS

On campus

Thursday 8 May 2025

Online

Thursday 15 May 2025

OPEN DAY

On campus

Saturday 30 August 2025

Stay up to date with our
upcoming events:

sydney.edu.au/ug-events



Share the excitement

#USYD

@Sydney_uni



We recognise and pay respect to the Elders and communities – past, present, and emerging – of the lands that the University of Sydney's campuses stand on. For thousands of years they have shared and exchanged knowledge across innumerable generations for the benefit of all.

The information published in this guide is current at the time of publication and is subject to change for future years. For the latest course information, including admission criteria, course structure and availability, refer to: sydney.edu.au/courses

Produced by Marketing and Communications, the University of Sydney, February 2025. The University reserves the right to make alterations to any information contained within this publication without notice. CRICOS 00026A TEQSA PRV12057 25/9903