

# Animal Agriculture

Facilitator: Prof. Sergio (Yani) Garcia  
Director Dairy Research Foundation

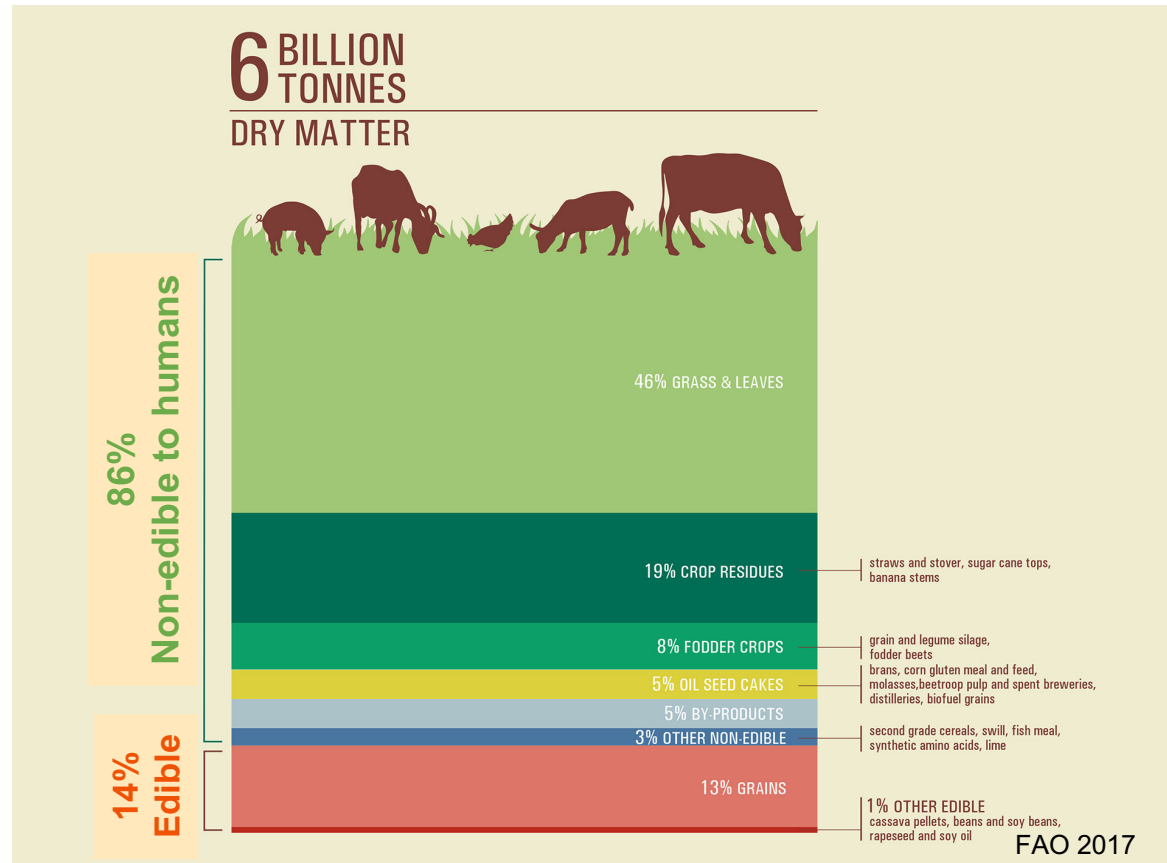
Sydney Institute of Agriculture  
School of Life and Environmental Sciences  
Faculty of Science



THE UNIVERSITY OF  
**SYDNEY**

# Animal Agriculture

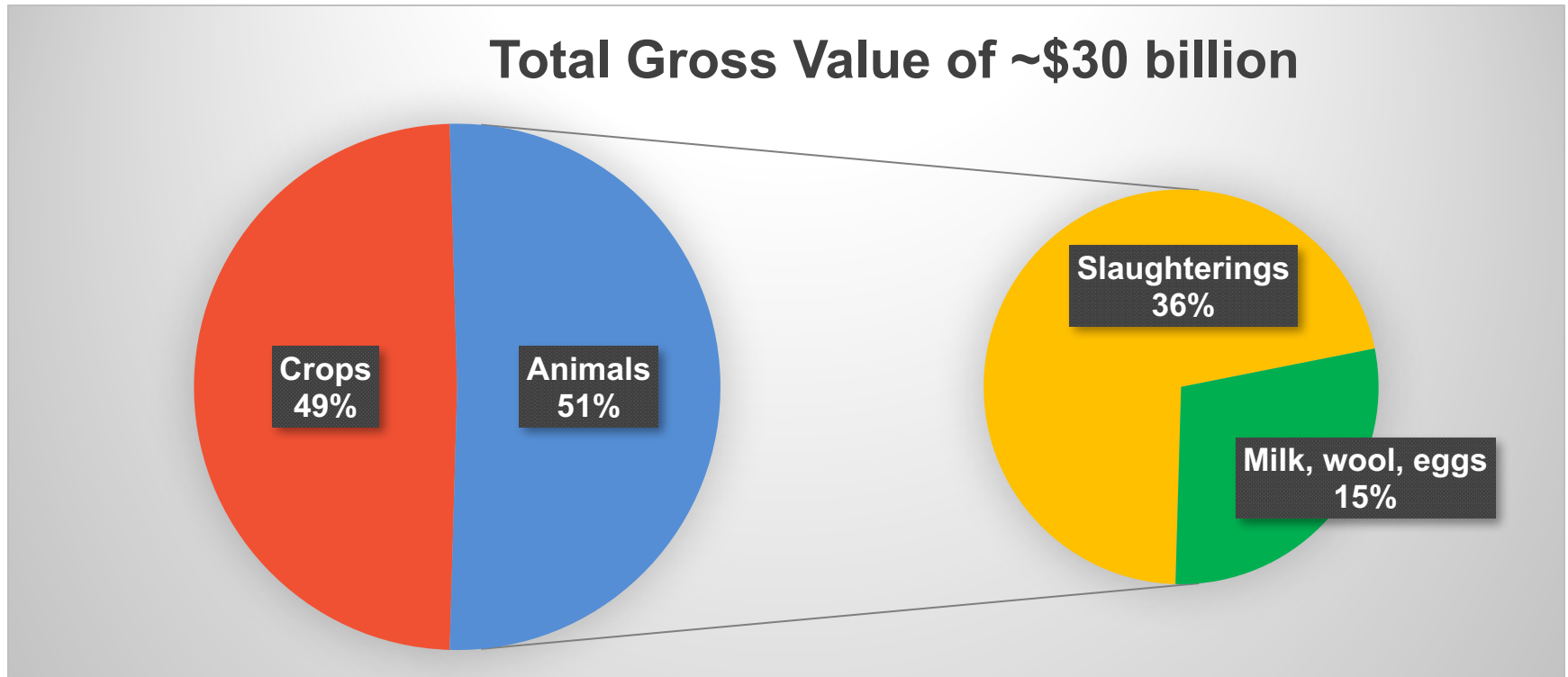
- 18% energy\*
- 25% protein (high quality)\*
- Source of income
- Integral role in the food system\*\*
  - Marginal lands into food
  - Fertiliser for crops
  - Non-edible feed into edible food



\*FAOSTAT, 2016

\*\*Mottet et al 2017, GFS 14:1-8

# Animal Agriculture in Australia



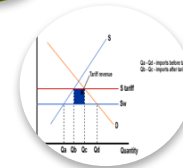
Source: [www.abs.gov.au](http://www.abs.gov.au)

# Animal Agriculture: needs, opportunities and challenges

- 70% more animal products by 2050
- Largest scope for technology and innovation
- New and emerging challenges



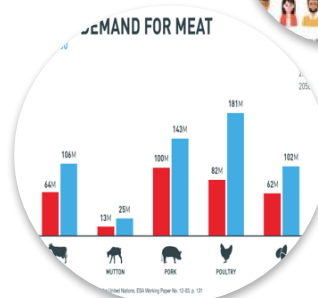
Loss of primary agricultural land



New market protectionism?



The 'People' factor



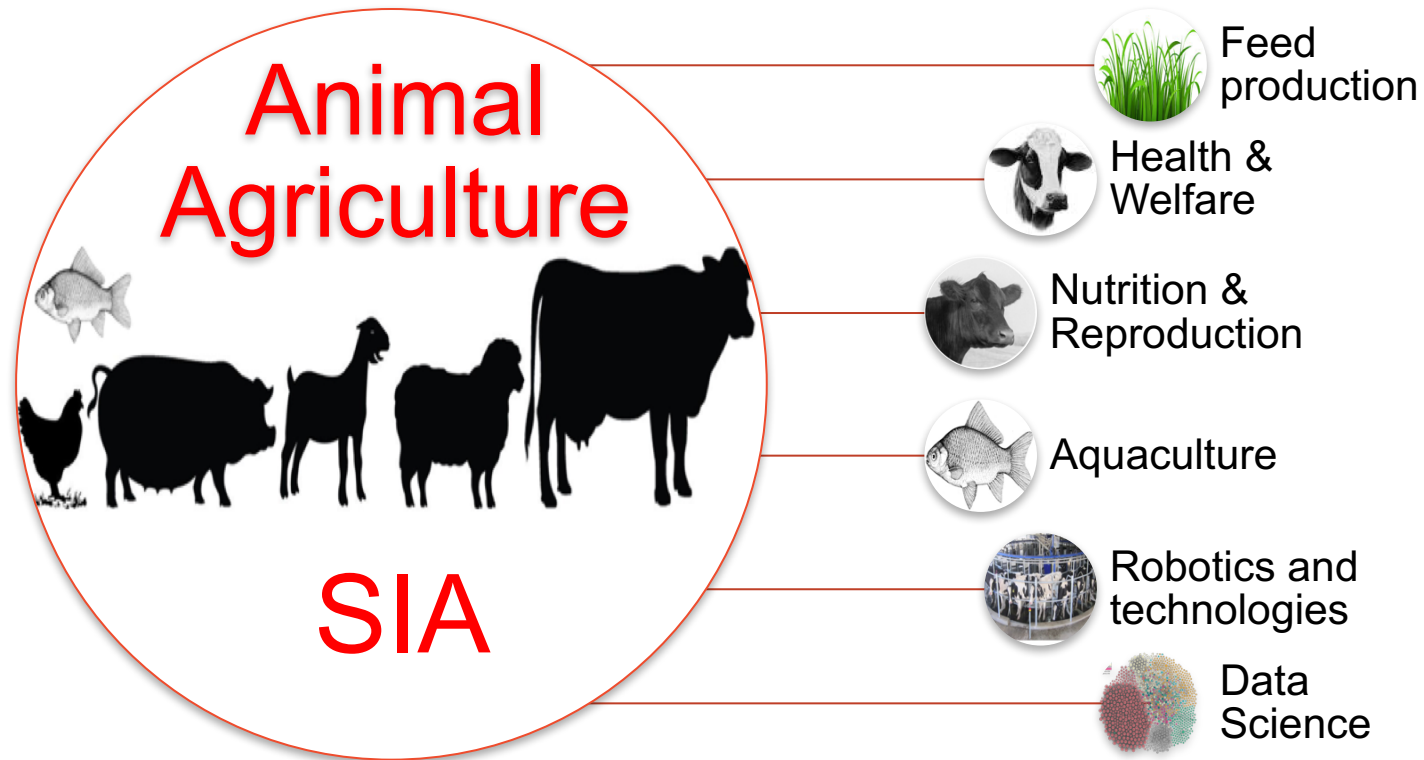
Food demand



Robotics



# Animal Agriculture at The University of Sydney



## Our speakers today...

# Animal Agriculture



# SIA



A/Prof  
Luciano  
González  
(SoLES)



A/Prof Roslyn  
Bathgate  
(SSVS)



Alexandra  
Green (PhD  
candidate,  
SoLES)