

A herd of black and white dairy cows is grazing in a lush green field. The cows are scattered across the frame, with some in the foreground and others further back. The background shows a line of trees under a bright, slightly hazy sky. The overall scene is peaceful and represents a typical agricultural landscape.

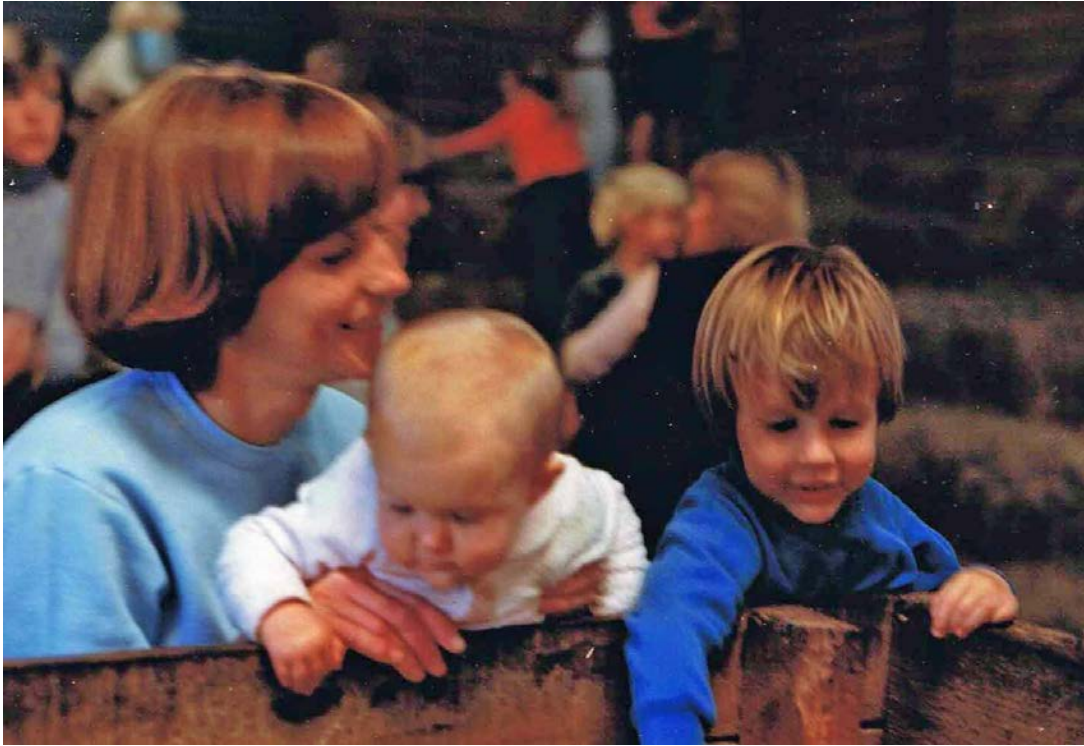
# Women in Agriculture: my journey and our future

Caroline Wardrop

2019 RD Watt Memorial Lecture



Fascinated with nature and animals, even from an early age



# My journey

2003: Human pharmaceuticals

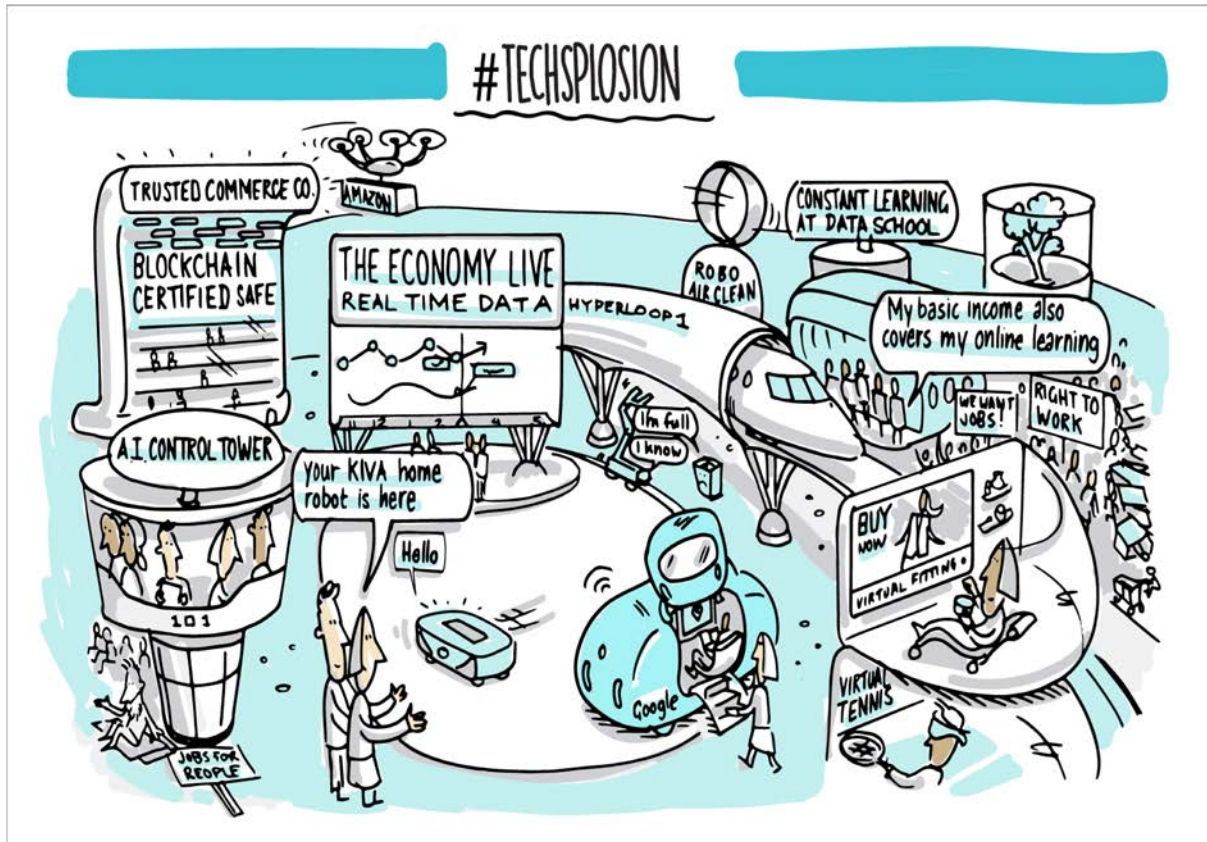
2005: Australian Lot Feeders' Association

2007: Department of Agriculture and Water Resources

- National Landcare Program
- Sustainable agriculture
- Soil RD&E Strategy
- Water Infrastructure
- Meat Exports + Codex Alimentarius
- Live Animal Exports
- Cabinet support
- Agricultural and Veterinary Chemicals

2018: Department of the Prime Minister and Cabinet

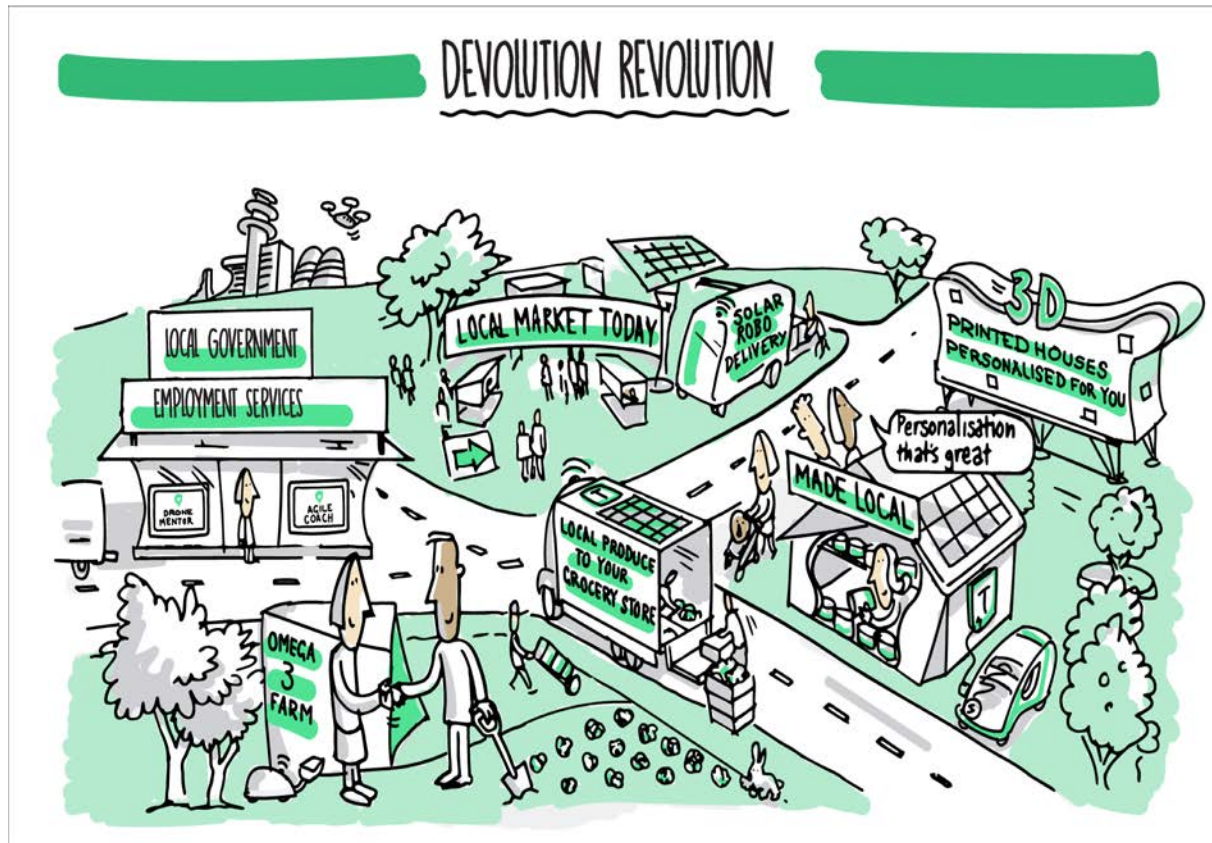
# Imagining the future



- Disruptive technologies have developed at an accelerated and exponential pace, and Australians are early adopters
- Workforce transitions have rapidly risen, favouring people with specialised skills



# Imagining the future



- Local institutions and organisations increase in relevance as Australians lose trust in big institutions
- People are reconnecting with their local communities, buying local and relying on community services

# Imagining the future



- Political destabilisation worsens, with constant changes of leadership and government, leading to people becoming frustrated with political institutions
- Highly personalised social media 'echo chambers' have supplanted traditional sources of news and current affairs, resulting in polarised and partisan coverage becoming the norm
- Australians are increasingly taking control into their own hands and directly shaping policy on the issues that matter to them most.

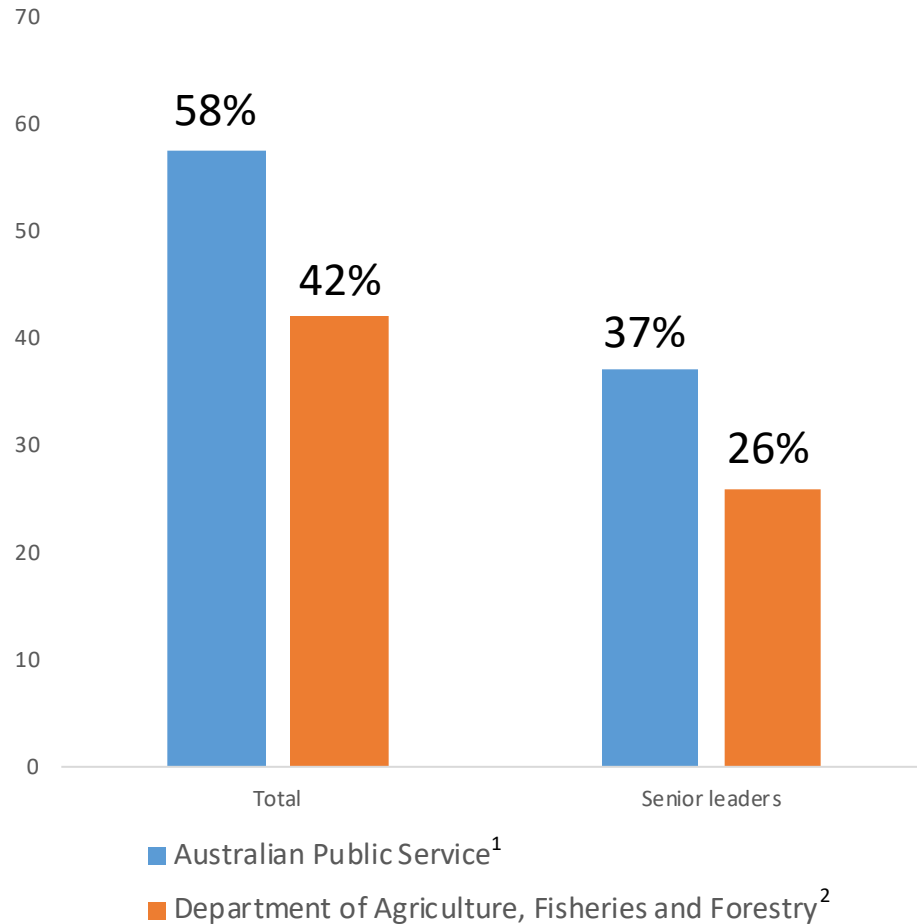
# Imagining the future



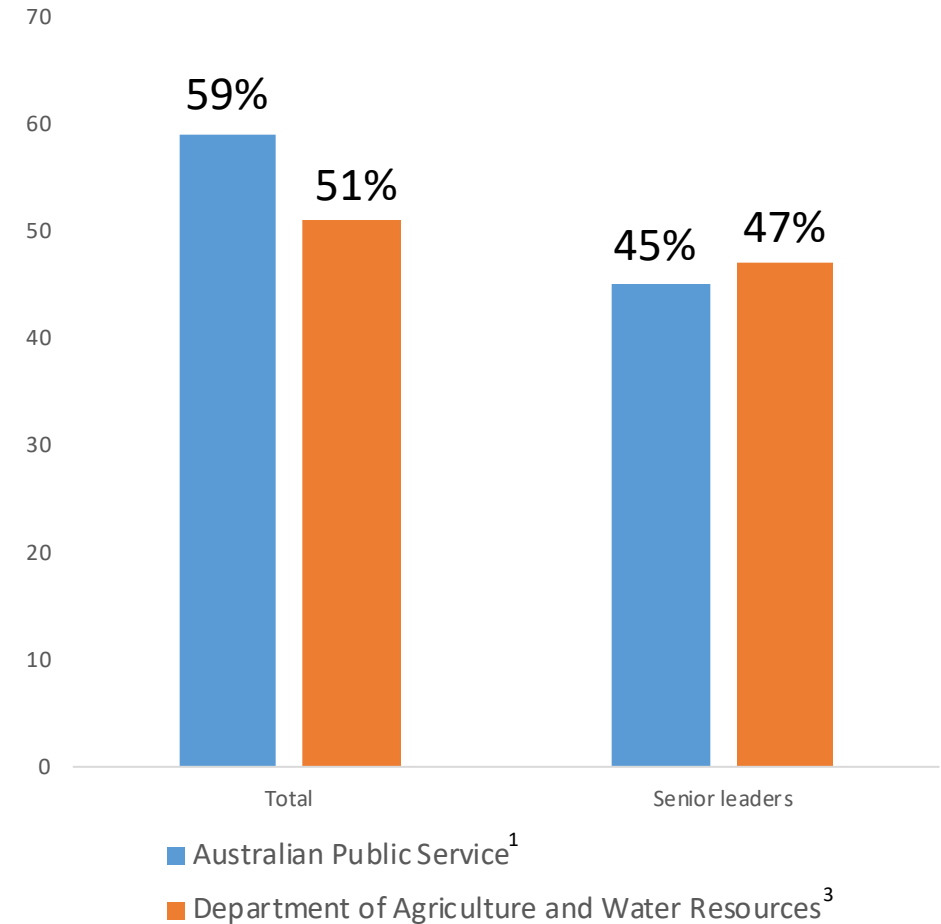
- Political, economic, environmental and social instability accelerates.
- Trade wars and protectionism prevails, tensions remain high and multinational agreements and international organisations break down.
- Nations are turning inwards, and people expect and trust their government to advocate for their interests and keep them safe and secure.

# The Australian Public Service is making progress...

30 June 2008



30 June 2018



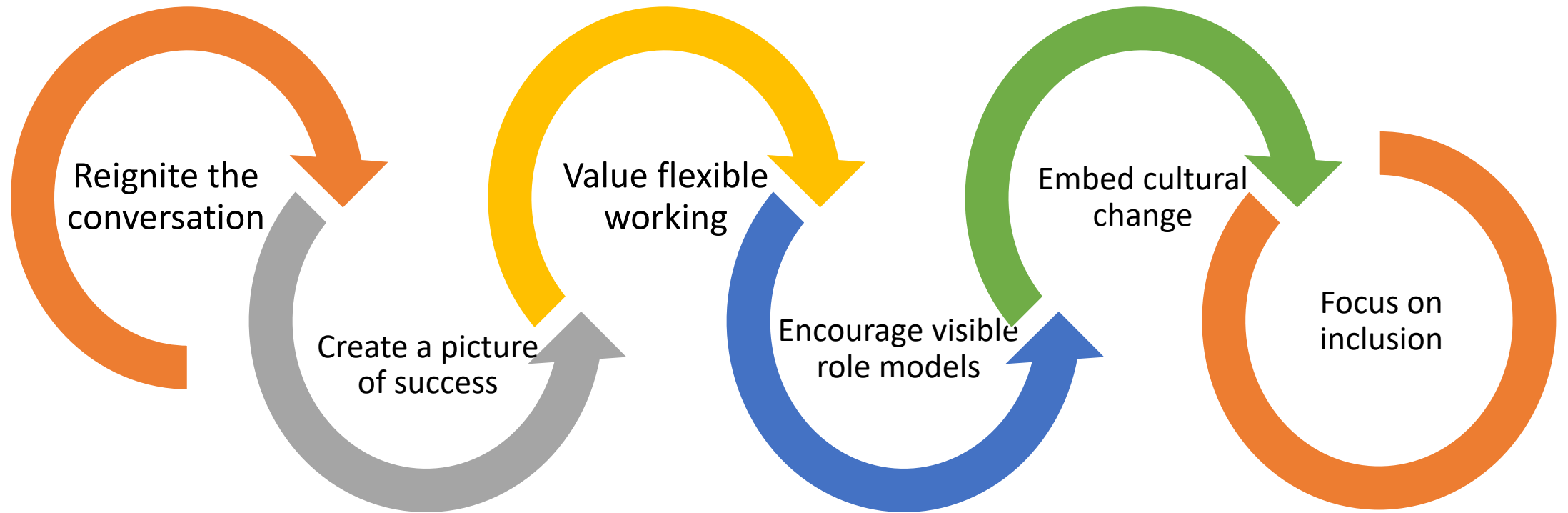


... but the agriculture sector is not

*Women make up only 18 per cent of industry  
representative boards*

*Only 15% of rural companies have formal diversity  
strategies*

# What can we do?



Thank you!