

## HOW TO APPLY: DOMESTIC APPLICANTS

### THE APPLICATION PROCESS

If you are an Australian citizen, Australian permanent resident or a New Zealand citizen, you are considered to be a domestic applicant.

Please refer to the course page <https://sydney.edu.au/courses/search.html> for the admission criteria, application opening and closing dates for each program.

You are encouraged to submit a completed application as early as possible. Places into the programs are highly competitive and limited. All offers are made based on academic merit. Rolling offers are released to applicants with high academic merit. Round offers may be released between December – January, subject to place availability.

**Note:** The Graduate Entry Master programs have strict deadlines to accept and enrol as there are limited places available. Please ensure that you read your offer letter and note any Faculty and course specific information. Any information available on the offer letter supersedes all other generic information available.

No deferrals are permitted for the Graduate Entry Master programs.

The majority of the Graduate Entry Master offers are full fee-paying place. There may be a small number of Commonwealth Supported Places (CSP) available and these are automatically allocated to Aboriginal and Torres Strait Islander applicants or applicants with high academic merit.

For further information about financial assistance for postgraduate study please visit: <https://sydney.edu.au/study/finances-fees-costs/fees-and-loans/fee-payment-assistance.html>

### Domestic applicant document checklist (Certified copies not required)

- ❖ Completed an accepted degree\*: All pages of official final academic transcript and degree testamur
- ❖ Completing an accepted degree\*: All pages of the most up-to-date official academic transcript
- ❖ Evidence of residency status (passport or birth certificate or citizenship certificate)
- ❖ If you are a Permanent Resident of Australia, written consent to verify your permanent residency visa with the Department of Home Affairs
- ❖ Evidence of name change (marriage certificate etc.), if applicable
- ❖ Evidence of English Language Proficiency, if applicable

Additional documents for courses with pre-requisite requirements:

- ❖ Completed 2020 Pre-requisite Information Form (available on course page)
- ❖ Official unit outlines for the nominated units

If your documents are not in English, they need to be officially translated into English by your institution and include the institution's official stamp on each page. Alternatively, you can have your document translated and certified by the National Accreditation Authority for Translators and Interpreters (NAATI).

Please submit an online application for assessment.

Note: It is the applicant's responsibility to provide all documents for assessment. Incomplete documents will not be assessed.

Please upload all required documents with your application. When you have submitted your application, you will receive a confirmation email from the University.

Admission enquiries:

[domestic.admissions@sydney.edu.au](mailto:domestic.admissions@sydney.edu.au)

## HOW TO APPLY: INTERNATIONAL APPLICANTS

### THE APPLICATION PROCESS

If you are NOT an Australian citizen, Australian permanent resident or New Zealand citizen, you are considered to be an international applicant.

Please refer to the course page <https://sydney.edu.au/courses/search.html> for the admission criteria, application opening and closing dates for each program.

You are encouraged to submit a completed application as early as possible. Places into the programs are highly competitive and limited. All offers are made based on academic merit. Rolling offers are released to applicants with high academic merit. Round offers are released between December – January, subject to place availability.

**Note:** The Graduate Entry Master programs have strict deadlines to accept and enrol as there are limited places available. Please ensure that you read your offer letter and note any Faculty's course specific information. Any information available on the offer letter supersedes all other generic information available.

No deferrals are permitted for the Graduate Entry Master programs.

Separate scholarship deadlines may apply - check the scholarships website for details <http://sydney.edu.au/scholarships/>

### International applicant document checklist

- ❖ Completed an accepted degree\*: All pages of official final academic transcript and degree testamur
- ❖ Completing an accepted degree\*: All pages of the most up-to-date official academic transcript
- ❖ Explanation of Grading System
- ❖ Copy of valid passport
- ❖ Evidence of English Language Proficiency
- ❖ Evidence of name change (marriage certificate etc.), if applicable

Additional documents for courses with pre-requisite requirements:

- ❖ Completed 2020 Pre-requisite Information Form (available on course page)
- ❖ Official unit outlines for the nominated units

If your documents are not in English, they need to be officially translated into English by your institution and include the institution's official stamp on each page. Alternatively, you can have your document translated and certified by the National Accreditation Authority for Translators and Interpreters (NAATI).

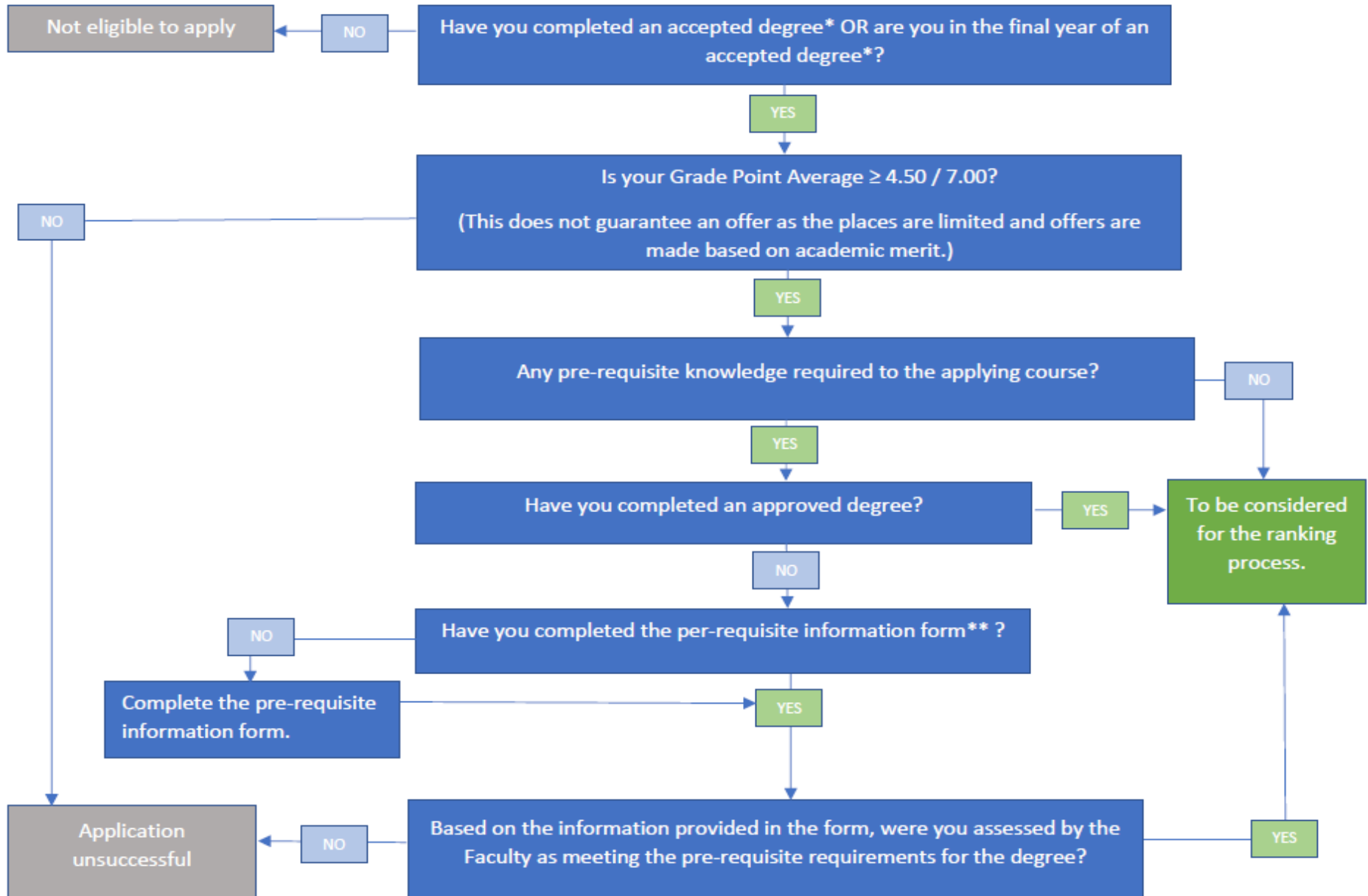
Please submit an online application for assessment. Note: It is the applicant's responsibility to provide all documents for assessment. Incomplete documents will not be assessed.

Please upload all required documents with your application. When you have submitted your application, you will receive a confirmation email from the University.

Admission enquiries:

[international.admissions@sydney.edu.au](mailto:international.admissions@sydney.edu.au)

### ADMISSION PROCESS FOR DOMESTIC AND INTERNATIONAL APPLICANTS



\*An accepted degree must be either:

a) a bachelor's degree, master's degree or PHD accredited under the Australian Qualifications Framework from an Australian university or self-accrediting higher education institution; or

b) a bachelor's degree, master's degree or PHD from an overseas university listed in the National Office of Overseas Skills Recognition Guide, provided that the degree is equivalent to an Australian bachelor's, master's degree or PHD under the Australian Qualifications Framework.

Additional information:

- Applicants who have more than one eligible degree should submit all qualifications, and the degree that meet the Grade Point Average (GPA) requirement or yields the higher GPA will be used as the basis for assessing eligibility for ranking process.
- All GPA calculations are calculated based on the most up-to-date academic transcript at the time of application and the calculation is internal information only.
- Note: Graduate Certificate and Graduate Diploma qualifications are not considered as meeting the tertiary qualification requirement.
- \*\*Before completing the form, please read all instructions carefully and ensure that you refer to the supplementary documents provided. NOTE: incomplete forms will not be assessed.