

# Master of Medicine (Advanced) (General Practice and Primary Health Care)

Note: requirements for the Master's must be completed first  
(60 credit points)

## Compulsory units (12 credit points)

CEPI5100 Introduction to  
Clinical Epidemiology (S1+2)

GPPC5002 Complexity in  
Primary Health Care (S2)



## Stream Specific units (Min 24 – max 30 credit points)

GPPC5001 Primary Health Care  
Fundamentals (S1)

IMAG5042 Essential Imaging  
for Clinicians (S1)

MBHT5004 Cardiovascular  
Metabolic Management (S2)

BMRI5019 Psychiatry in Clinical  
Practice (S1)

INTM5014 Cardiology (S1)

PAIN5003 Pain Treatment and  
Management Principles (S1+2)

DERM5001 Essential  
Dermatology (S1)

MBHT5001 Diabetes  
Management (S1)

PAED5008 Common Childhood  
Presentations (S1)<sup>#</sup>



## Elective units

(Min 6 – max 12 credit points. Can be chosen from  
stream specific units above OR the list below)

BETH5204 Clinical Ethics (S1)

INTM5007 Basic Renal  
Medicine (S2)\*

PAED5007 Paediatric Critical  
Care (S1)

PUBH5510 Healthy Aging and  
fall prevention (S2)

GMED5001 Genomics in  
Clinical Practice (S1)

MBHT5002 Advanced Diabetes  
Management (S2)

PMED5100 Paediatric  
Infectious Diseases (S1)<sup>#</sup>

SEXH5205 Adolescent Sexual  
Health (S2)

INTM5003 Basic Rheumatology  
(S1)\*

MEDF5002 Teaching in the  
Clinical Environment (S2)

PMED5101 Paediatric Allergy  
(S2)

SEXH5401 Introduction: Sexual and  
Reproductive Health (S1+2)

INTM5004 Basic Respiratory  
Medicine (S1)\*

PAED5002 Adolescent  
Medicine (S2)

PMED5102 Paediatric Nutrition  
and Obesity (S2)<sup>#</sup>

SEXH5402 Counselling for  
Health Professionals (S1+2)

INTM5005 Basic  
Gastroenterology (S2)\*

PAED5003 Neurology and  
Developmental Paediatrics (S1)

PUBH5018 Introductory  
Biostatistics (S1)

SEXH5405 Contraception and  
Preconception Care (S2)

SEXH5407 Sex Gender and  
Sexuality (S2)



## Project units (12 credit points)

MEDF5301 Advanced Masters  
(12cp) (S1 or 2)

MEDF5302/3 Advanced Masters  
(2x 6cp) (S1 + 2)

### Key:

S1 = Semester 1

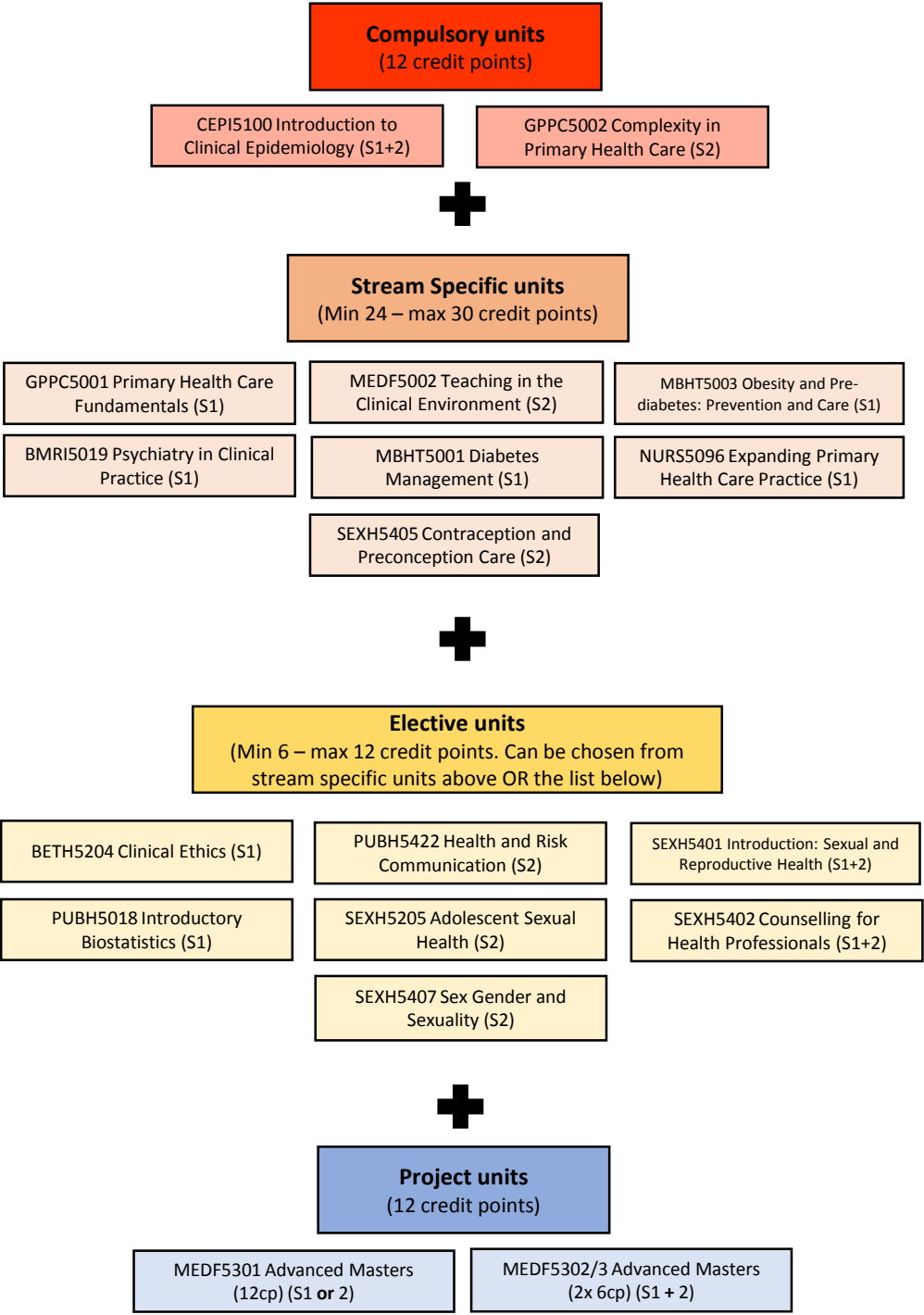
S2 = Semester 2

\*3 credit point units

<sup>#</sup> Not available in 2020

# Master of Science in Medicine (Advanced) (General Practice and Primary Health Care)

Note: requirements for the Master's must be completed first  
(60 credit points)



**Key:**  
S1 = Semester 1  
S2 = Semester 2  
IO = Intensive October

**Master of Medicine (General Practice and Primary Health Care)**  
(48 credit points)

**Compulsory units**  
(12 credit points)

CEPI5100 Introduction to  
Clinical Epidemiology

GPPC5002 Complexity in  
Primary Health Care (S2)



**Stream Specific units**  
(Min 24 – max 30 credit points)

GPPC5001 Primary Health Care  
Fundamentals (S1)

IMAG5042 Essential Imaging  
for Clinicians (S1)

MBHT5004 Cardiovascular  
Metabolic Management (S2)

BMRI5019 Psychiatry in Clinical  
Practice (S1)

INTM5014 Cardiology (S1)

PAIN5003 Pain Treatment and  
Management Principles (S1+2)

DERM5001 Essential  
Dermatology (S1)

MBHT5001 Diabetes  
Management (S1)

PAED5008 Common Childhood  
Presentations (S1)<sup>#</sup>



**Elective units**  
(Min 6 – max 12 credit points. Can be chosen from  
stream specific units above OR the list below)

BETH5204 Clinical Ethics (S1)

INTM5007 Basic Renal  
Medicine (S2)\*

PAED5007 Paediatric Critical  
Care (S1)

PUBH5510 Healthy Aging and  
fall prevention (S2)

GMED5001 Genomics in  
Clinical Practice (S1)

MBHT5002 Advanced Diabetes  
Management (S2)

PMED5100 Paediatric  
Infectious Diseases (S1)<sup>#</sup>

SEXH5205 Adolescent Sexual  
Health (S2)

INTM5003 Basic Rheumatology  
(S1)\*

MEDF5002 Teaching in the  
Clinical Environment (S2)

PMED5101 Paediatric Allergy  
(S2)

SEXH5401 Introduction: Sexual and  
Reproductive Health (S1+2)

INTM5004 Basic Respiratory  
Medicine (S1)\*

PAED5002 Adolescent  
Medicine (S2)

PMED5102 Paediatric Nutrition  
and Obesity (S2)<sup>#</sup>

SEXH5402 Counselling for  
Health Professionals (S1+2)

INTM5005 Basic  
Gastroenterology (S2)\*

PAED5003 Neurology and  
Developmental Paediatrics (S1)

PUBH5018 Introductory  
Biostatistics (S1)

SEXH5405 Contraception and  
Preconception Care (S2)

SEXH5407 Sex Gender and  
Sexuality (S2)

**Key:**

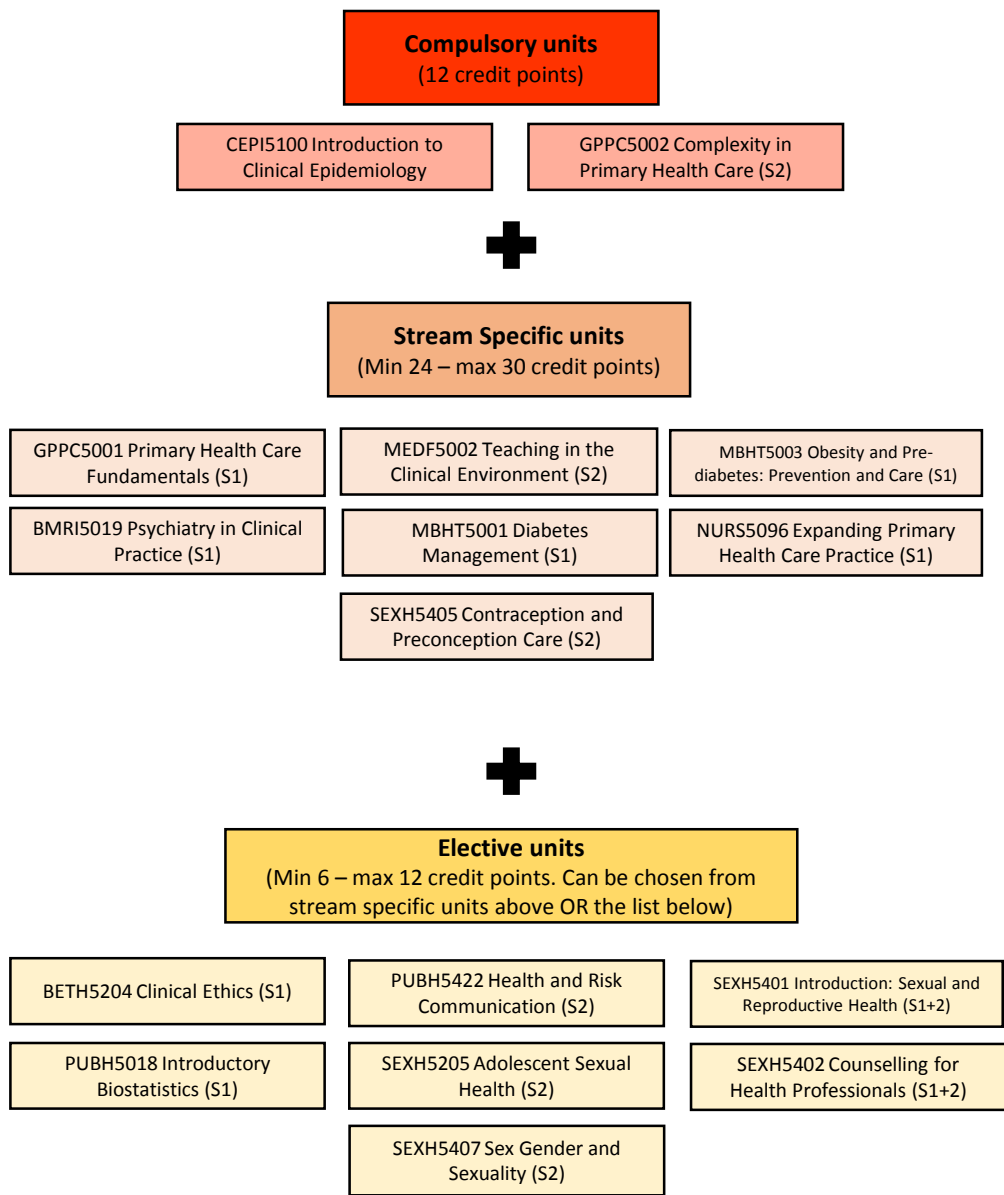
S1 = Semester 1

S2 = Semester 2

\*3 credit point units

<sup>#</sup> Not available in 2020

**Master of Science in Medicine (General Practice and Primary Health Care)**  
(48 credit points)



**Key:**

S1 = Semester 1

S2 = Semester 2

IO = Intensive October

# Graduate Diploma in Medicine (General Practice and Primary Health Care)

(36 credit points)

## Compulsory unit (6 credit points)

CEPI5100 Introduction to  
Clinical Epidemiology



## Stream Specific units (Min 24 – max 30 credit points)

GPPC5001 Primary Health Care Fundamentals (S1)	IMAG5042 Essential Imaging for Clinicians (S1)	MBHT5004 Cardiovascular Metabolic Management (S2)
BMRI5019 Psychiatry in Clinical Practice (S1)	INTM5014 Cardiology (S1)	PAIN5003 Pain Treatment and Management Principles (S1+2)
DERM5001 Essential Dermatology (S1)	MBHT5001 Diabetes Management (S1)	PAED5008 Common Childhood Presentations (S1) <sup>#</sup>



## Elective units (Max 6 credit points. Can be chosen from stream specific units above OR the list below)

BETH5204 Clinical Ethics (S1)	INTM5007 Basic Renal Medicine (S2) <sup>*</sup>	PAED5007 Paediatric Critical Care (S1)	PUBH5510 Healthy Aging and fall prevention (S2)
GMED5001 Genomics in Clinical Practice (S1)	MBHT5002 Advanced Diabetes Management (S2)	PMED5100 Paediatric Infectious Diseases (S1) <sup>#</sup>	SEXH5205 Adolescent Sexual Health (S2)
INTM5003 Basic Rheumatology (S1) <sup>*</sup>	MEDF5002 Teaching in the Clinical Environment (S2)	PMED5101 Paediatric Allergy (S2)	SEXH5401 Introduction: Sexual and Reproductive Health (S1+2)
INTM5004 Basic Respiratory Medicine (S1) <sup>*</sup>	PAED5002 Adolescent Medicine (S2)	PMED5102 Paediatric Nutrition and Obesity (S2) <sup>#</sup>	SEXH5402 Counselling for Health Professionals (S1+2)
INTM5005 Basic Gastroenterology (S2) <sup>*</sup>	PAED5003 Neurology and Developmental Paediatrics (S1)	PUBH5018 Introductory Biostatistics (S1)	SEXH5405 Contraception and Preconception Care (S2)
SEXH5407 Sex Gender and Sexuality (S2)			

### Key:

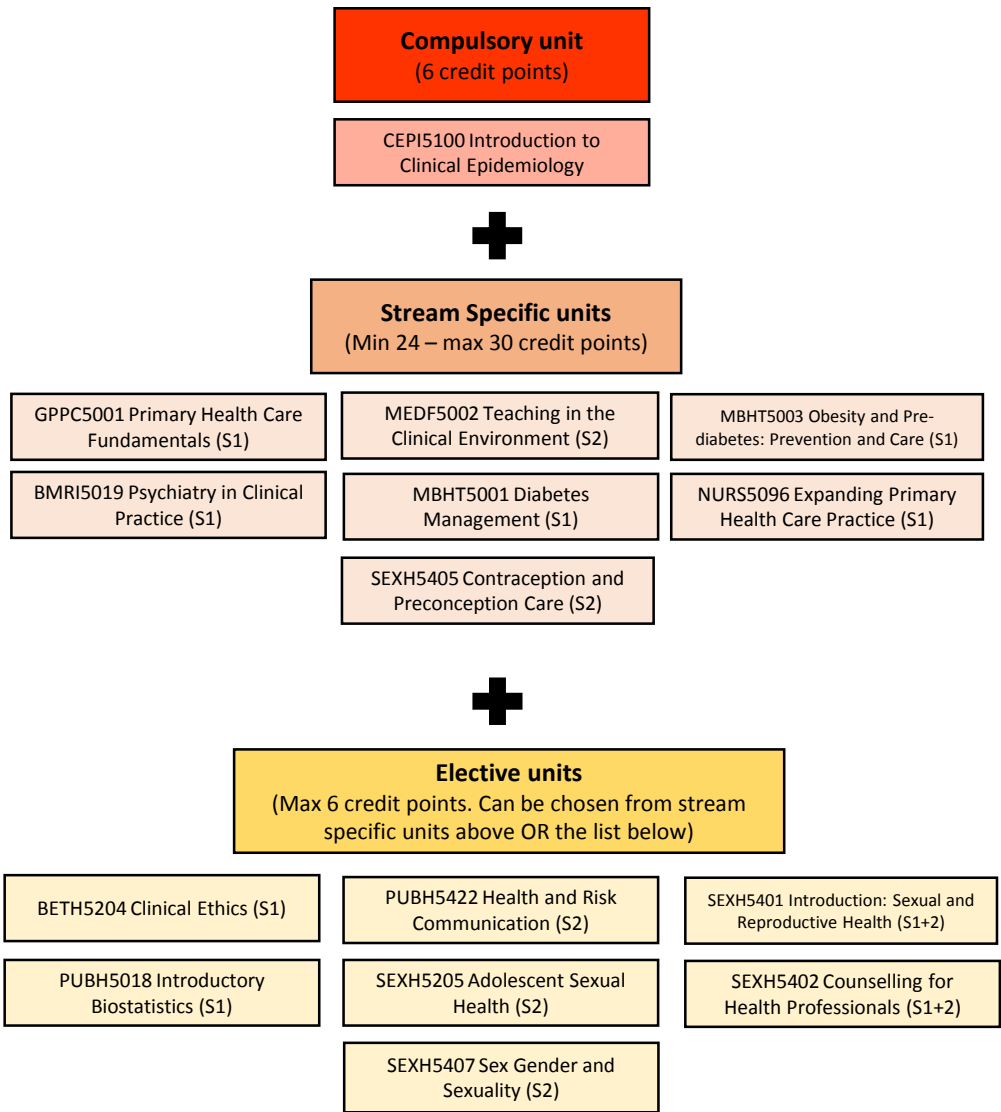
S1 = Semester 1

S2 = Semester 2

<sup>\*</sup>3 credit point units

<sup>#</sup> Not available in 2020

**Graduate Diploma in Science in Medicine (General Practice and Primary Health Care)**  
(36 credit points)



**Key:**  
S1 = Semester 1  
S2 = Semester 2  
IO = Intensive October

## Graduate Certificate in Medicine (General Practice and Primary Health Care)

(24 credit points)

### Stream Specific units (24 credit points)

GPPC5001 Primary Health Care Fundamentals (S1)	IMAG5042 Essential Imaging for Clinicians (S1)	MBHT5004 Cardiovascular Metabolic Management (S2)
BMRI5019 Psychiatry in Clinical Practice (S1)	INTM5014 Cardiology (S1)	PAIN5003 Pain Treatment and Management Principles (S1+2)
DERM5001 Essential Dermatology (S1)	MBHT5001 Diabetes Management (S1)	PAED5008 Common Childhood Presentations (S1) <sup>#</sup>

#### Key:

S1 = Semester 1

S2 = Semester 2

<sup>#</sup> Not available in 2020

**Graduate Certificate in Science in Medicine (General Practice and Primary Health Care)**

(24 credit points)

### Stream Specific units

(24 credit points)

GPPC5001 Primary Health Care  
Fundamentals (S1)

**MEDF5002 Teaching in the Clinical Environment (S2)**

MBHT5003 Obesity and Pre-diabetes: Prevention and Care (S1)

BMRI5019 Psychiatry in Clinical Practice (S1)

MBHT5001 Diabetes Management (S1)

NURS5096 Expanding Primary Health Care Practice (S1)

## SEXH5405 Contraception and Preconception Care (S2)

**Key:**

S1 = Semester 1

S2 = Semester 2