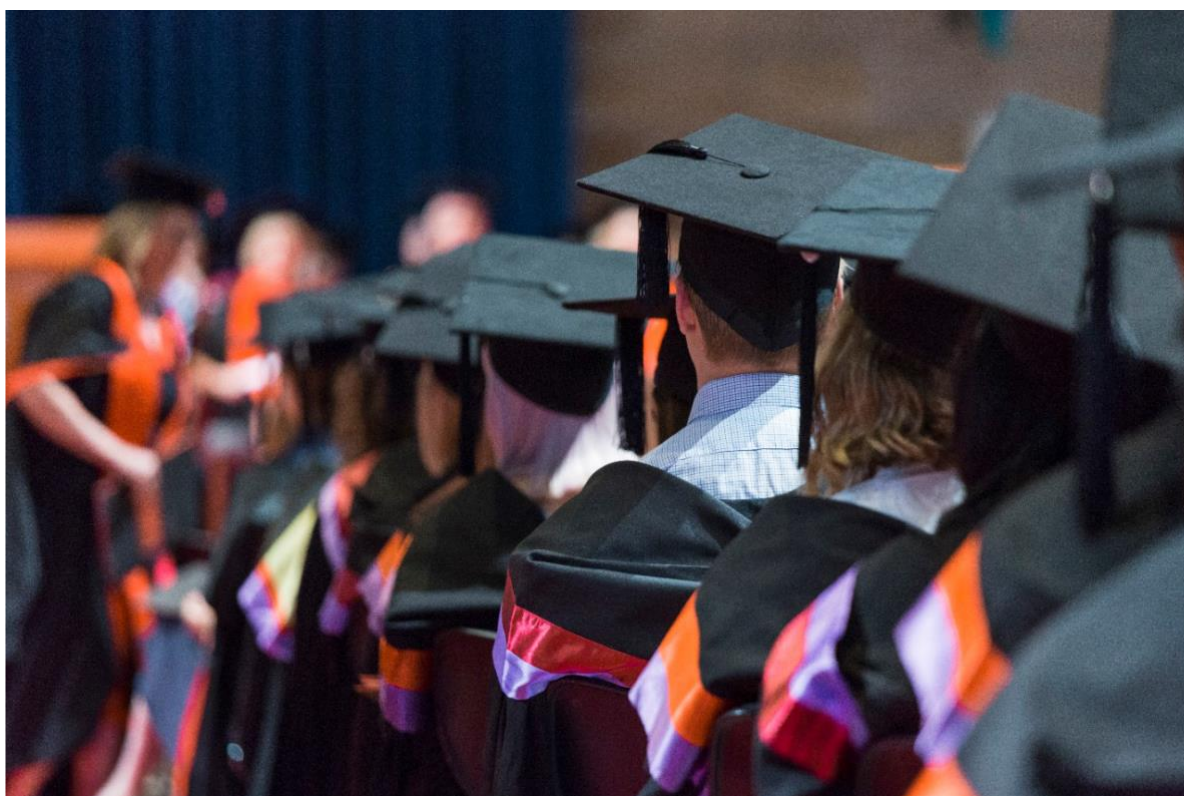




DOCTOR OF MEDICINE & DOCTOR OF DENTAL MEDICINE INTERNATIONAL ADMISSIONS GUIDE 2021

FOR INTERNATIONAL APPLICANTS ONLY



CONTENTS

1. INTRODUCTION	3
2. ADMISSION CRITERIA	5
2.1. OVERVIEW	5
2.2. ARE YOU AN INTERNATIONAL APPLICANT?	6
2.3. YOUR BACHELOR'S DEGREE	7
2.4. YOUR GPA AND ADMISSIONS TEST RESULTS	9
2.4.1. The GPA entry requirement	10
2.4.2. The GPA calculation	10
2.4.3. Admission test results (GAMSAT, MCAT, DAT, CDAT)	12
2.4.4. Illness and misadventure	13
2.5. ENGLISH LANGUAGE REQUIREMENT	13
2.6. BIOLOGY PRE-REQUISITE (DMD ONLY)	13
2.7. ARE YOU INELIGIBLE FOR ADMISSION?	13
3. OFFERS	15
3.1. HOW OFFERS ARE MADE	15
3.2. PLACES, FEES AND SCHOLARSHIPS	15
3.3. DEFERRAL	15
3.4. NO EXEMPTIONS OR ADVANCED STANDING	16
3.5. APPEALS	16
3.6. IMPERMISSIBLE CONDUCT	16
4. POST-OFFER REQUIREMENTS (FOR STUDENTS WHO ARE OFFERED AND ACCEPT A PLACE)	17
4.1. NSW MINISTRY OF HEALTH COMPLIANCE CHECKING	17
4.2. NSW WORKING WITH CHILDREN CHECK (WWCC)	17
4.3. FIRST AID TRAINING	17
4.4. INHERENT REQUIREMENTS AND PROFESSIONALISM REQUIREMENTS	18
5. INTERNSHIPS (MD ONLY)	19
6. THE APPLICATION PROCESS	20
6.1. ADMISSIONS STEPS FOR INTERNATIONAL APPLICANTS	20
6.2. TIMELINE FOR APPLICATIONS	20
6.3. HOW TO USE THE ONLINE SYDNEY STUDENT APPLICATION FORM	20
6.3.1. Before you begin	20
6.3.2. Document submission guidelines	21
6.3.3. The online application form	21
6.3.4. Pages in the online application form	22
6.3.5. Declaration	25
6.3.6. Submitting your application	26
6.4. COMPLETING A CONFIRMATION PAGE	26
6.5. APPLICANTS REQUIRING FURTHER ASSESSMENT	27
7. APPLICATION CHECKLIST	29
8. CONTACT US	31

1. INTRODUCTION

Welcome to the *International Admissions Guide 2021* for international applicants to the Doctor of Medicine (MD) (CRICOS code: 079216J) and the Doctor of Dental Medicine (DMD) (CRICOS code: 074120B) at the University of Sydney.

Please note that due to the global Coronavirus (COVID-19) emergency, the University has reviewed its admissions process and application timeline for admission to the MD and DMD in 2021.

Applying for medicine or dentistry is a complicated process, and the aim of this Guide is to answer the most common questions about admissions criteria and how to apply.

It will help you to determine whether you have met the criteria to submit an application for admission to the MD or DMD. It also provides a step-by-step guide to completing the application form, submitting documents and meeting the timelines.

If, after reading this information, you have any questions, please feel free to contact us via the Contact Us page at the end of this Guide.

Thank you for considering the MD and the DMD at the University of Sydney and best wishes for your application.

2020 CURRICULUM CHANGES AND ASSUMED KNOWLEDGE (MD ONLY)

In 2020, the MD curriculum was revised to include more time in clinical settings and preparation for practice. Biomedical science teaching and learning in Year 1 is therefore at a higher level than the previous program. These changes were endorsed by the Faculty of Medicine and Health and approved by the University's Academic Board.

The assumed knowledge on entry to the MD program is in anatomy, physiology and molecular/cellular biology. Students entering the MD will have access to an online Foundation Knowledge Course, delivered by Sydney Medical School, which covers the assumed knowledge. Access to the course is provided once students have enrolled in the MD program. Students are required to complete the online Foundation Knowledge Course and a subsequent integrated self-assessment. Further information will be provided in offer letters.

Sydney Medical School values highly the diversity of the medical student community and encourages applications from students from diverse backgrounds and with a wide variety of undergraduate degrees. A Biomedical Science undergraduate degree is not a requirement for entry to the MD, and all MD students are required to complete the Foundation Knowledge Course regardless of their prior degree.



IMPORTANT NOTE

Due to the global Coronavirus (COVID-19) emergency, the University has reviewed its admissions process and application timeline for admission to the MD and DMD in 2021. The University regularly reviews the admission criteria and application processes for its courses. It reserves the right to change these criteria and processes without notice. Statements in this Guide provide general advice about the currently applicable criteria and processes and will not be correct for future application periods. It is possible that GPA scores will, in the future, be incorporated into the ranking of applicants for entry into the MD and DMD. It is also possible that the GPA requirement will be increased in the future. Applicants are advised to consult the relevant websites for the most recent information:

<https://sydney.edu.au/courses/courses/pc/doctor-of-medicine.html> and

<https://sydney.edu.au/courses/courses/pc/doctor-of-dental-medicine.html>.

Please read and follow the instructions in this Guide carefully. All prospective students of medicine and dentistry are expected to be able to follow instructions.

If you miss a step in the application process or fail to complete a step correctly, your application might not be eligible for consideration.

2. ADMISSION CRITERIA

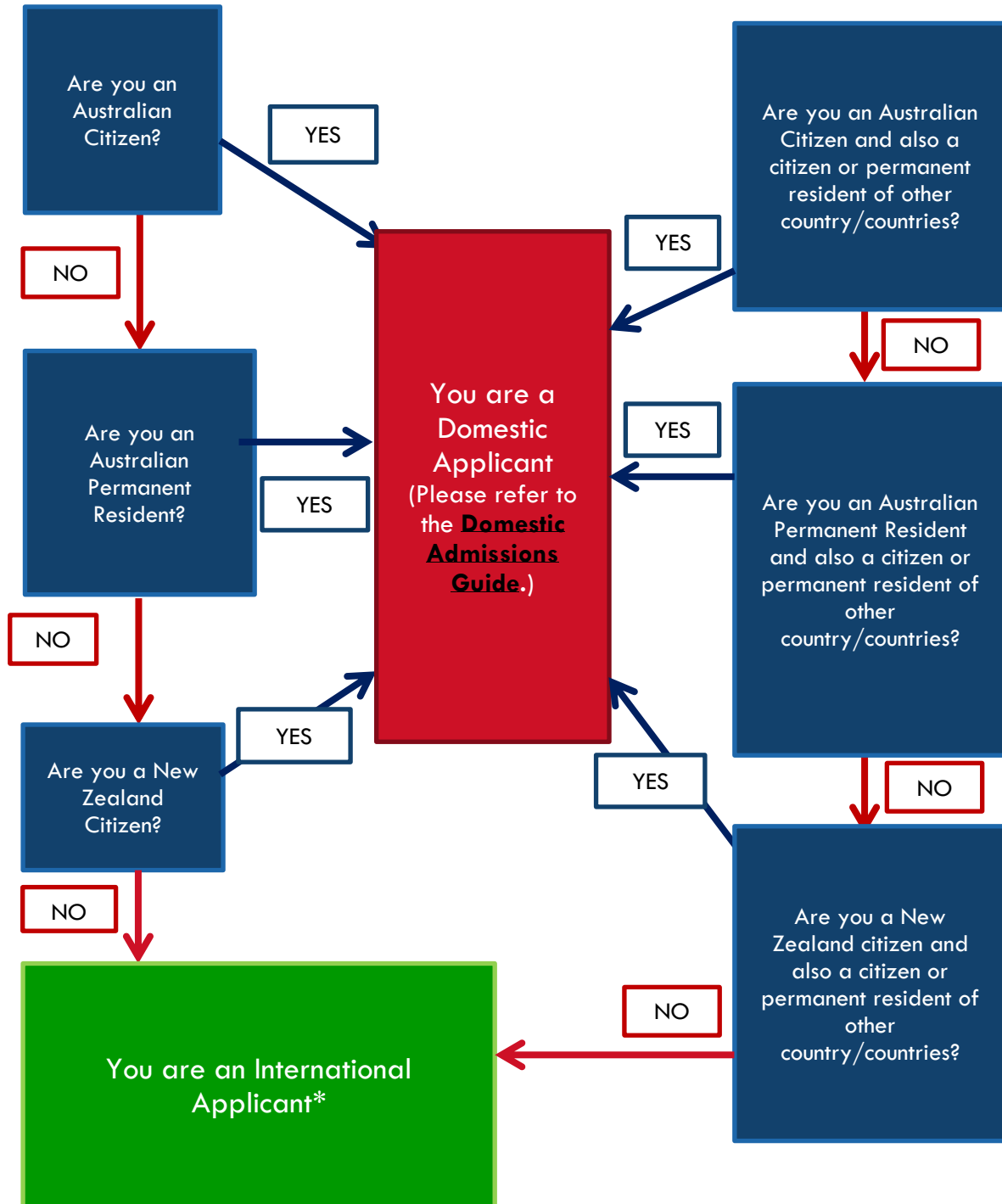
2.1 OVERVIEW

For 2021 entry only, international applicants must fulfil two main requirements to be eligible for admission:	
1. Satisfactory performance in an eligible bachelor's degree (indicated by <u>GPA</u>)	<ul style="list-style-type: none"> - International applicants must have completed, or be in the final year of, a bachelor's degree and have at least a credit average at the time of application, as indicated by Grade Point Average (GPA). - International applicants will have their bachelor's degree assessed and GPA calculated by the University.
2. Satisfactory performance in an <u>admissions test</u> (GAMSAT/MCAT or for DMD, DAT/CDAT)	<ul style="list-style-type: none"> - Applicants must submit valid results from an admissions test with their application. - International applicants must either: <ul style="list-style-type: none"> o submit Graduate Australian Medical School Admissions Test (GAMSAT) or Medical College Admission Test (MCAT) results with their application; or o for 2021 entry only, if admissions test results are not available at the time of application, provide proof of registration for the May/June 2020 sitting of GAMSAT*. - International DMD applicants may alternatively submit US Dental Admissions Test (DAT) or Canadian Dental Aptitude Test (CDAT) results.
International applicants must also fulfil the following additional requirements, if applicable, to be eligible for admission:	
1. <u>English language requirements</u>	<ul style="list-style-type: none"> - All applicants must meet this requirement.
2. <u>Biology pre-requisite (DMD only)</u>	<ul style="list-style-type: none"> - DMD applicants must meet this requirement.

* Please refer to 'GAMSAT' in the Supplementary Questions section at 6.3.4: 'Pages in the online application form'.



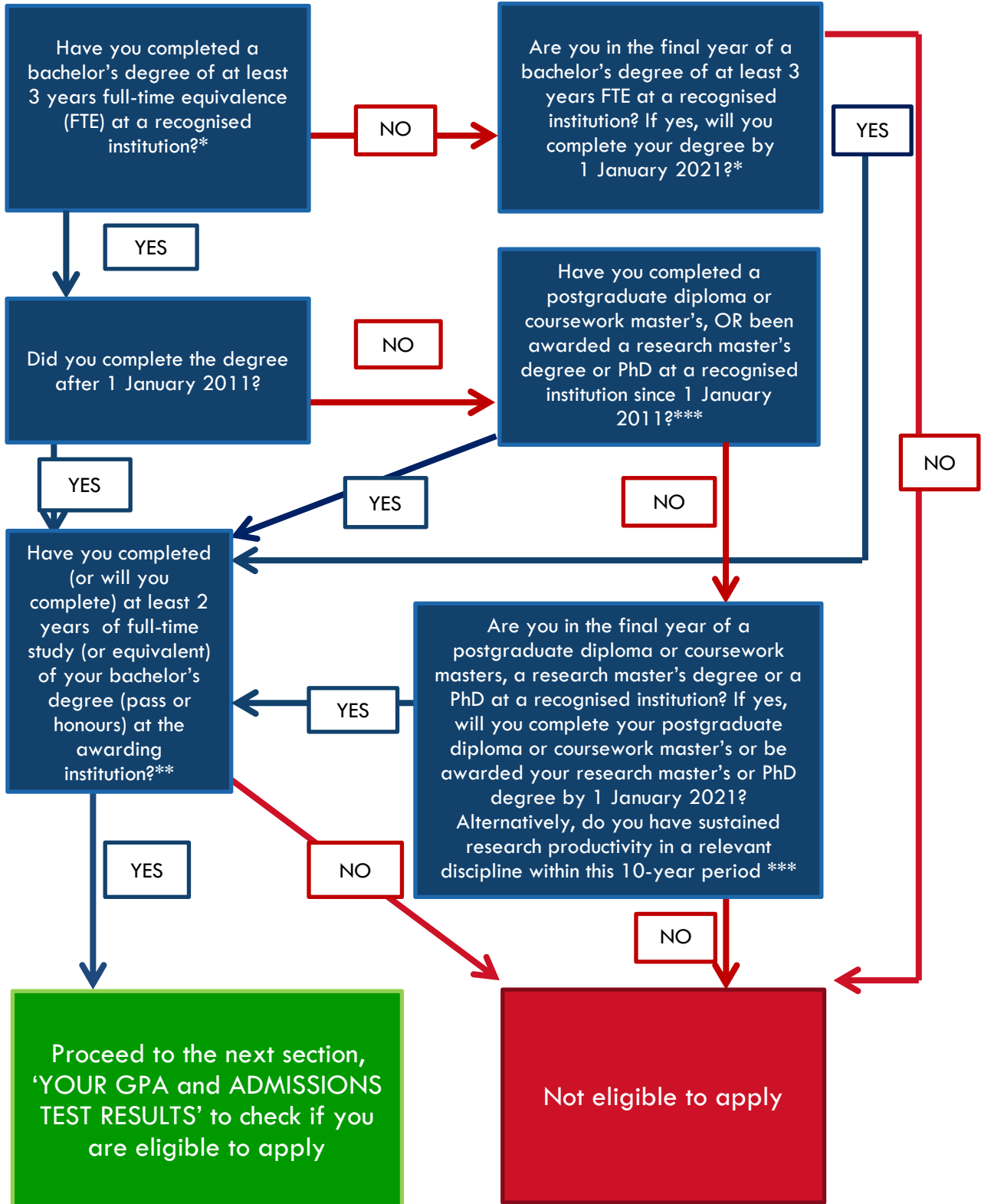
2.2 ARE YOU AN INTERNATIONAL APPLICANT?



*Note: For information for applicants changing from international to domestic status, please refer to clause 39 of the University's *Coursework Policy 2014* and <https://sydney.edu.au/courses/courses/pc/doctor-of-medicine.html> (for MD) or <https://sydney.edu.au/courses/courses/pc/doctor-of-dental-medicine.html> (for DMD).



2.3 YOUR BACHELOR'S DEGREE



*Your degree must be either:

- a) a bachelor's degree (pass) accredited at Level 7 under the Australian Qualifications Framework or a bachelor's degree (with honours) accredited at Level 8 under the Australian Qualifications Framework, from an Australian university or self-accrediting higher education institution; or
- b) a bachelor's degree from an overseas university listed in the National Office of Overseas Skills Recognition Guide, provided that the degree is equivalent to an Australian bachelor's degree (pass or with honours).

Your bachelor's degree must be of at least 3 years full-time equivalence (FTE).

You must complete your bachelor's degree by 1 January of the year in which you intend to commence the MD or DMD. (Note: This policy also applies to applicants who are enrolled in an accelerated program.) Therefore, if you wish to apply in 2020 for 2021 entry, you cannot undertake an exchange or study abroad program in the second half of 2020, or enrol in summer school in 2020-2021. If you wish to do so, you will need to consider applying for a future intake.

** You must complete at least 2 years of full-time study (or equivalent) of your bachelor's degree (pass or honours) at the awarding institution. For example, for a degree which requires 144 credit points to be completed in 3 years, 96 credit points must be completed at the awarding institution.

*** If your bachelor's degree was completed more than 10 years before 1 January of the year for which you are seeking enrolment, you must, in addition:

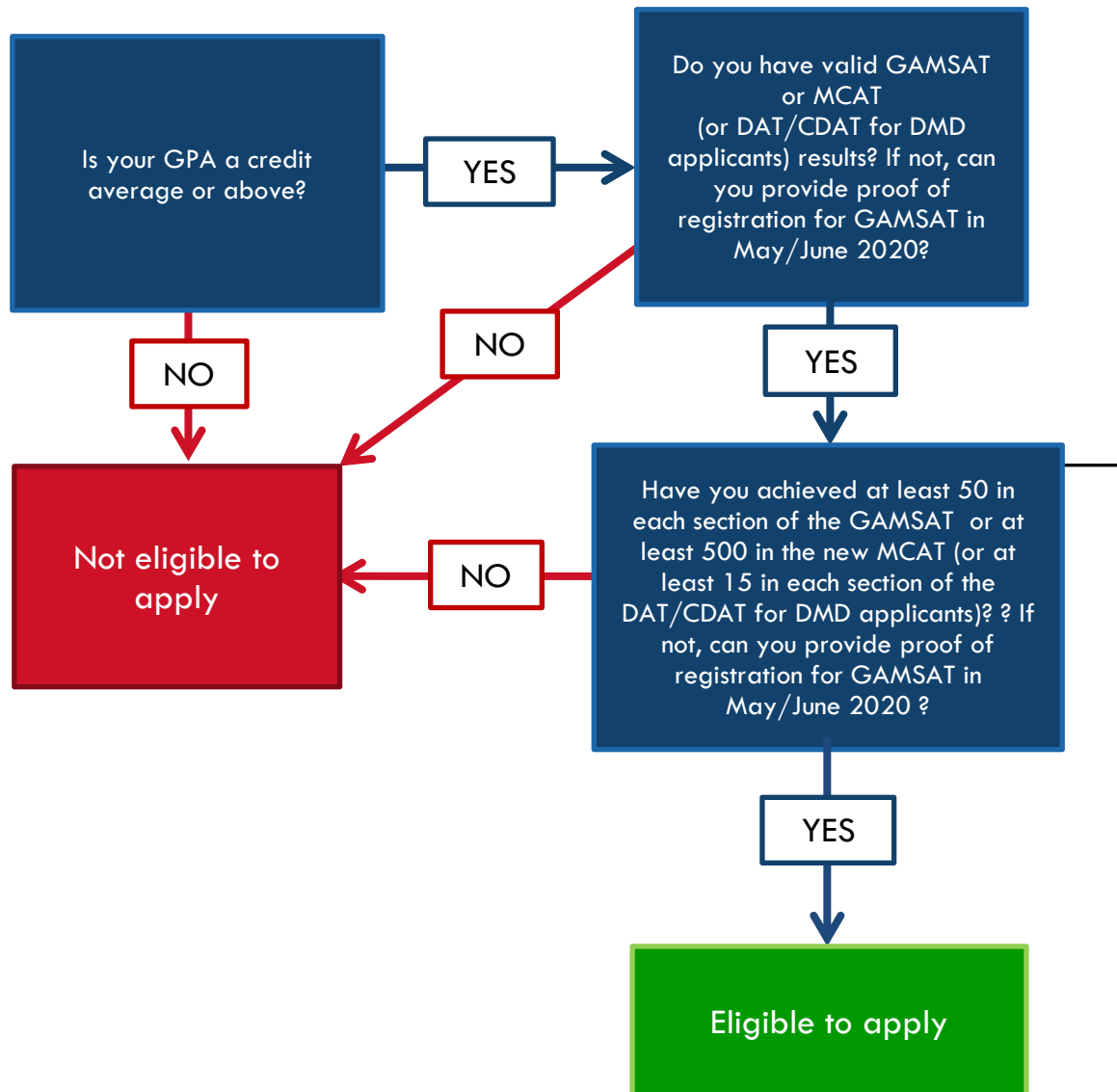
- (1) have completed within this 10-year period, a postgraduate degree or postgraduate diploma (or equivalent) of at least one year FTE; or
- (2) complete prior to 1 January of the year in which you intend to enrol in the MD or DMD, a postgraduate degree or postgraduate diploma (or equivalent) of at least one year FTE; or
- (3) have been awarded within this 10-year period, a postgraduate research degree (or equivalent); or
- (4) be awarded prior to 1 January of the year in which you intend to commence the MD or DMD, a postgraduate research degree (or equivalent); or
- (5) have demonstrated to the satisfaction of the University sustained research productivity in a relevant discipline within this 10-year period.

For the purposes of paragraphs (1) to (4) above, a postgraduate diploma or degree (or equivalent) means:

- a) a postgraduate degree or postgraduate diploma accredited at Level 8, 9, or 10 under the Australian Qualifications Framework, from an Australian university or self-accrediting higher education institution; or
- b) an overseas university listed in the National Office of Overseas Skills Recognition Guide, provided that the postgraduate degree or postgraduate diploma is equivalent to an Australian postgraduate degree or diploma.

You must complete at least one year of full-time study (or equivalent) of your postgraduate degree or postgraduate diploma at the awarding institution.

2.4 YOUR GPA AND ADMISSIONS TEST RESULTS



2.4.1 THE GPA ENTRY REQUIREMENT

Applicants must have a minimum GPA of 5 at the time of application to be considered (for example, a GPA of 5 out of 7, where 7 represents a 'High Distinction' on a 7-point numeric scale). Applicants with overseas qualifications are required to achieve an equivalent academic level (for example, a GPA of 2.7 out of 4 for US/Canadian universities, a GPA of 3.3 out of 5 for Singaporean universities, a bachelor's degree at a Lower II class for UK universities).

2.4.2 THE GPA CALCULATION

As an international applicant, your GPA will be calculated by the University of Sydney. You must provide your official transcripts with your online application.

If your bachelor's degree was completed more than 10 years before 1 January of the year for which you are seeking enrolment, and you have met or will meet the additional postgraduate study requirement specified in [Part 2.3](#) of this Guide, your GPA will still be calculated from your bachelor's degree results.

GENERAL GUIDELINES

1. The GPA is calculated over the entire duration of the bachelor's degree (pass or honours).
2. The unit values or credit points of each subject will be used. If this information is not available, a value of 1 will be assigned.
3. All years of study, regardless of level, are weighted equally.
4. All failed subjects will be included in the calculation with a mark of zero (0). If a subject appears on your transcript as 'withdrawn' or 'discontinued', i.e. a subject in which you were enrolled but did not complete, it will only be included in the GPA calculations if 'Withdraw/Fail' or 'Discontinue/Fail' is shown. These subjects will also be assigned a zero (0) and no percentage marks can be used.
5. If a subject has been failed and repeated, both marks will be included in the GPA calculation.
6. The calculation is based on subjects completed at the time of application. For example, for applicants who are applying whilst in the final year of their degree, first semester results will be included in the assessment only if those results are recorded on the transcripts at the time of application. It should be noted that any offer of a place is conditional upon the applicant completing his/her degree at the required level of performance by 1 January of the year in which you intend to commence the MD or DMD.
7. Bachelor's degree Honours years

Research Honours years are included in the GPA calculation for applicants who have undertaken an additional honours year either at the institution at which their bachelor's degree was awarded or at another recognised institution.

For the purposes of the GPA calculation, grades given to honours years that are otherwise ungraded are as follows:



Award	Grade
First Class (1)	7
Second Class, First Division (2.1)	6
Second Class, Second Division (2.2)	5
Third Class (3)	4

It is important to note that any grades for units of study completed in an honours year will **not** be overwritten with a higher grade based on the honours level achieved. This will occur only for those components, if any, which are reported as ungraded. See [Examples \(docx, 33KB\)](#) for clarification.

Note: The GPA for applicants whose bachelor's degree was awarded with integrated Honours will be calculated on the basis of the applicant's academic results in the bachelor's degree, not by reference to the table above. See [Examples \(docx, 33KB\)](#) for clarification.

8. Combined degree programs

For applicants who have undertaken a combined degree program, all units of study undertaken in that program will be used in the calculation of a GPA regardless of whether or not one component of the degree has been abandoned, completed or conferred/awarded.

A single degree completed as part of a combined degree will not be considered separately for the calculation of the GPA under any circumstances.

For example, in the event that your GPA does not meet the minimum requirement when taking into consideration all subjects completed for your combined degree, it is NOT possible to group subjects according to the degree with which they were associated in order to achieve a higher GPA.

9. Credit transfer

Academic results from multiple records which, in their entirety, clearly contribute to the continuation or award of the same course, may be combined if they are:

- cross-institutional studies which have been fully credited into a bachelor's degree;
- non-award studies which have been fully credited into a bachelor's degree (e.g. Open Universities Australia study);
- studies which are a continuation of the same course and can be fully combined into a later period of study (e.g. where a student has returned to continue a course after a break); or
- combined bachelor's degrees.

Academic results from different tertiary courses will not be combined, even where partial credit or advanced standing from a different course has been noted on the academic record.

The University may combine the calculated GPAs of applicants who have been enrolled in more than one bachelor's degree at the same institution and:

- (a) whose qualifying bachelor's degree for admission is less than 2 years (FTE); or
- (b) who have received a credit transfer of 50% or more from a previous degree in their qualifying bachelor's degree.

The University will have regard to the relative credit point contributions of the applicant's enrolments to their GPA for each degree when calculating the combined GPA.

10. Pass/Fail basis ungraded subjects

Subjects that are awarded on a Pass/Fail basis will only be included in the calculation when they represent more than 50% of the subjects included on the transcript. A numeric value of 4 will be assigned to those subjects.

2.4.3 ADMISSIONS TEST RESULTS (GAMSAT, MCAT, DAT, CDAT)

GAMSAT

Applicants must have achieved a minimum score of 50 in each section of the GAMSAT to be eligible for admission. Applicants whose GAMSAT results are not available at the time of application, and who can provide proof of registration for the May/June 2020 sitting of GAMSAT, must provide their GAMSAT results to the University by no later than 29 July 2020.

For the purpose of admission to the MD or DMD in 2021 ONLY, each section of the GAMSAT will be used to rank applicants. Although you will be asked to provide overall GAMSAT scores and average GAMSAT scores on your online application form, these will not be used in the assessment of applications in 2020.

Applications, information and sample questions for GAMSAT are available on the Australian Council for Educational Research (ACER) website at <http://www.gamsat.acer.edu.au/>.

MCAT

For 2021 entry, international applicants must have achieved a minimum score of 500 in the MCAT.

Details about MCAT, including registration dates, location and dates of tests and preparation guidelines are available from the MCAT Program Office: Medical College Admission Test (MCAT) (<https://www.aamc.org/students/applying/mcat/>).

DAT AND CDAT (INTERNATIONAL DMD APPLICANTS ONLY)

The US Dental Admission Test (DAT) and the Canadian Dental Aptitude Test (CDAT) can be used for international DMD entry. Applicants using either of these test results must achieve a minimum score of 15 in each of the sections. The Manual Dexterity Test component of the CDAT is not included.

Details about the DAT, including registration information and test preparation material can be found on the American Dental Association's website: <http://www.ada.org/en/education-careers/dental-admission-test>

Details about the CDAT, including registration dates and test information can be found on the Canadian Dental Association's website: <http://www.cda-adc.ca/en/becoming/index.asp>

2.4.4 ILLNESS AND MISADVENTURE

The official results listed on an applicant's transcript, and their admission test results, will be taken as the awarding and testing authorities' assessment of the academic standards reached by the applicant, as reflected in their GPA and admission test results, taking due account of illness and misadventure according to the authorities' policies.

2.5 ENGLISH LANGUAGE REQUIREMENT

Please refer to the website at

[https://www.sydney.edu.au/content/dam/corporate/documents/about-us/governance-and-structure/university-calendar/admissions-standards-english-language-proficiency-\(ab-approved-20200303\).pdf](https://www.sydney.edu.au/content/dam/corporate/documents/about-us/governance-and-structure/university-calendar/admissions-standards-english-language-proficiency-(ab-approved-20200303).pdf).

2.6 BIOLOGY PRE-REQUISITE (DMD only)

All DMD applicants are required to meet a biology pre-requisite in one of the following ways:

- Having completed by 1 January 2021 one of the following 6-credit point Biology units of study from the University of Sydney or its equivalent from a recognised institution.
 - BIOL 1001 (Concepts in Biology) (Please note, this unit has not been offered since 2017.)
 - BIOL 1003 (Human Biology) (Please note, this unit has been replaced by BIOL 1008)
 - BIOL 1006 (Life & Evolution)
 - BIOL 1007 (From Molecules to Ecosystems)
 - BIOL 1008 (Human Biology)

Please note: 1) Equivalent units of study must be a university course and include a laboratory component – applicants should provide a transcript and unit of study outline; 2) Other Universities may calculate credit point values for units differently or use a different scale. The University Admissions Office or the Sydney Dental School will determine your eligibility.

OR

- Having completed, or expecting to complete by 1 January 2021, a bachelor's degree program that has embedded biology units.

For detailed information, please refer to <https://sydney.edu.au/courses/courses/pc/doctor-of-dental-medicine.html>.

2.7 ARE YOU INELIGIBLE FOR ADMISSION?

- (1) Applicants who have not completed or will not complete an eligible bachelor's degree by 1 January 2021 (regardless of whether they have completed/will complete a



postgraduate coursework diploma or degree, or have been awarded/will be awarded a postgraduate research degree by 1 January 2021) are ineligible to apply.

- (2) Applicants who have previously applied unsuccessfully for admission to the MD and have commenced studies in postgraduate medicine at another university are not eligible for admission.

*For this purpose, applicants are considered to have commenced their course on the date on which they first enrolled in the medical program.

- (3) Applicants who have previously applied unsuccessfully for admission to the DMD and have commenced studies in postgraduate dentistry at another university are not eligible for admission.

*For this purpose, applicants are considered to have commenced their studies on the date on which they first enrolled in the dental program.

- (4) Applicants for the MD or DMD who have previously accepted a conditional or unconditional offer of a place in the MD or DMD at the University of Sydney, and:

- a. failed to submit any outstanding documentation to proceed with an unconditional offer or to enrol; or
- b. enrolled in and subsequently withdrawn from or discontinued that program without prior approval from the Head of School and Dean of the relevant school;

are ineligible for admission to the MD or DMD for a period of two years from the date of application or enrolment, as relevant.

3. OFFERS

3.1 HOW OFFERS ARE MADE

Offers of places are made on the basis of merit, as indicated by applicants' final rankings.

Applicants will be ranked on the basis of admissions test results. This will generate a single ranked list of applicants.

Offers will be made in sequence commencing with the applicant with the highest ranked score. Should it arise that applicants are ranked equally, the University reserves the right to use an additional selection tool, such as an interview or Situational Judgement Test (SJT). The University will give these applicants due notice of any additional requirements. If further separation is required, the applicants' GPA at the time of application may be used, at the discretion of the University.

Successful applicants will be given a firm date by which to accept the offer of a place. Offers not accepted in accordance with the instructions contained in the offer letter by that date will lapse.

Unconditional offers are only made to applicants who were already graduates at the time of application and who have provided all necessary documents to the University. Conditional offers are made to applicants who have not completed the final year of their bachelor's degree and/or who have not provided all necessary documents to the University. A conditional offer will be withdrawn and cancelled if the applicant fails to achieve the required GPA on completion of the degree, if the applicant fails to complete the degree by the deadline stipulated in their offer letter, or if the applicant fails to provide all necessary documents by the deadline. Refer to the timeline and offer letters for details.

3.2 PLACES, FEES AND SCHOLARSHIPS

Please refer to the following websites and remember that the information is subject to change:

<https://sydney.edu.au/courses/courses/pc/doctor-of-medicine.html> (for the MD) or

<https://sydney.edu.au/courses/courses/pc/doctor-of-dental-medicine.html> (for the DMD)

Scholarships: <https://sydney.edu.au/medicine-health/study-medicine-and-health/scholarships.html>

3.3 DEFERRAL

Please refer to the relevant websites for the deferral rules:

<https://sydney.edu.au/courses/courses/pc/doctor-of-medicine.html> (MD) and

<https://sydney.edu.au/courses/courses/pc/doctor-of-dental-medicine.html> (DMD)

Applicants should be prepared and ready to commence studies in the year for which they have applied.

3.4 NO EXEMPTIONS OR ADVANCED STANDING

No applicant will be admitted to the MD or DMD with advanced standing or credit, and no exemptions from participating in part of the program will be offered.

3.5 APPEALS

Applicants who believe that there has been a procedural or other non-academic error in the handling of their application for admission to the MD or DMD may appeal in writing, with supporting evidence, to the Admissions Committee via the University Admissions Office (see [Contact Us](#) page at the end of this Guide).

3.6 IMPERMISSIBLE CONDUCT

The University reserves the right, in its sole discretion, to reject an application for admission or to vary or cancel an offer of admission if an applicant's conduct during the admissions process or prior to enrolment causes it to form the view that the applicant is unsuitable for admission to the MD or DMD.

Examples of conduct that might make an applicant unsuitable for admission to the MD or DMD include (but are not limited to):

- failure by the applicant to treat University of Sydney employees, students, applicants or other members of the University community with respect and courtesy, including failure to use appropriate language and tone in written or verbal communications;
- failure by the applicant to act honestly and ethically in their dealings with University of Sydney employees, students, applicants or other members of the University community;
- conduct that results in the applicant being excluded from another higher education institution, or from a course or program offered by another higher education institution;
- conduct that gives the University reasonable cause to believe that enrolling the applicant in clinical training may place them, their peers, or members of the public at risk of harm; and
- conduct that results in the applicant being charged with a criminal offence.

4. POST-OFFER REQUIREMENTS

FOR STUDENTS WHO ARE OFFERED AND ACCEPT A PLACE IN THE MD OR DMD

Students who are offered and accept a place in the MD or DMD will be required to fulfil the following requirements in January of the year of MD or DMD commencement and will receive further information after their offer has been accepted.

4.1 NSW MINISTRY OF HEALTH COMPLIANCE CHECKING

The NSW Ministry of Health has implemented a placement system for all clinical placements at NSW Health facilities – known as “ClinConnect”. The system requires that all students undergo compliance checking before they are permitted to attend any clinical teaching at a hospital.

Please refer to the link below to learn about the COMPULSORY NSW Ministry of Health compliance checks.

http://sydney.edu.au/current_students/student_administration/enrolment/course-specific-requirements.shtml

4.2 NSW WORKING WITH CHILDREN CHECK (WWCC)

All MD and DMD students are required to provide a WWCC after enrolment <https://sydney.edu.au/students/working-with-children.html>. To obtain a WWCC, students must complete the online NSW Working with Children Check application available from the NSW Government, Office of the Children's Guardian web site. Applications are usually completed within days but can take up to 28 working days to complete.

Please note that new students must complete a proof of identity in person in NSW. They cannot complete this transaction from interstate or overseas; they cannot complete it over the phone or online and they cannot delegate it to another person. They will be required to provide an address in Australia when completing an application. International students may wait until their arrival in Australia before submitting an application.

4.3 FIRST AID TRAINING

All MD and DMD students are required to present an original and current First Aid Certificate.

Which training course is acceptable? First aid training courses have theoretical as well as a practical component. As an example, the majority of first aid training courses are held over 2 days in the classroom or 1 day practical in the classroom with prior online learning.

Here is a list of the content to be covered in an acceptable first aid training course:

- Basic Life Support (DRSABCD)
- CPR (cardiopulmonary resuscitation) and AED (Automatic External defibrillator)
- Shock Management
- Airway Management - Asthma, Choking, Severe Allergic Reaction, Hyperventilation
- Cardiac Emergencies

- Seizures and Convulsions
- Bleeding and Wound Care
- Burns and Scalds
- Extremes of Heat and Cold
- Musculoskeletal Injuries
- Poisons and Toxic Substances
- Bites and Stings
- Abdominal injuries

Note that current industry standards state that this qualification must be updated every 3 years with the CPR component being updated every 12 months.

The following organisations conduct recommended First Aid Training courses. However, new students must ensure that their chosen course covers the content listed above.

- Australian Red Cross Society (<http://www.redcross.org.au/>)
- Medilife (<http://www.medilife.com.au/>)
- Royal Life Saving Society Australia (<http://www.royalnsw.com.au>)
- St. John Ambulance Australia (<http://www.stjohn.org.au>)
- Sydney Uni Sport & Fitness (http://www.susf.com.au/page/first_aid_courses.html)
- Canadian Red Cross (Canada)
- St. John's Ambulance (Canada & USA)
- American Heart Association (USA)

4.4 INHERENT REQUIREMENTS AND PROFESSIONALISM REQUIREMENTS

Please note that all MD and DMD students are also required to:

- meet the Inherent course requirements for Medicine or Dentistry <https://sydney.edu.au/students/student-responsibilities/inherent-requirements.html>; and
- comply with the [Professionalism Requirements Provisions 2019](#).

For DMD Applicants: Please note that NSW Health policy dictates that carriage of a range of blood borne infections including Hepatitis C, Hepatitis B, and HIV, excludes infected individuals from performing exposure prone procedures

https://www1.health.nsw.gov.au/PDS/Pages/doc.aspx?dn=PD2019_026

Because dental students are required to perform a wide range of exposure prone procedures as part of clinical training, infection with any of the relevant viral conditions may preclude students from attending clinics, and make completion of the course impossible. For that reason, prospective DMD applicants who have blood borne viral infections are advised to contact the University's Disability Support Service on 02 8627 8422 or at disability.services@sydney.edu.au before applying.

5. INTERNSHIPS (MD ONLY)

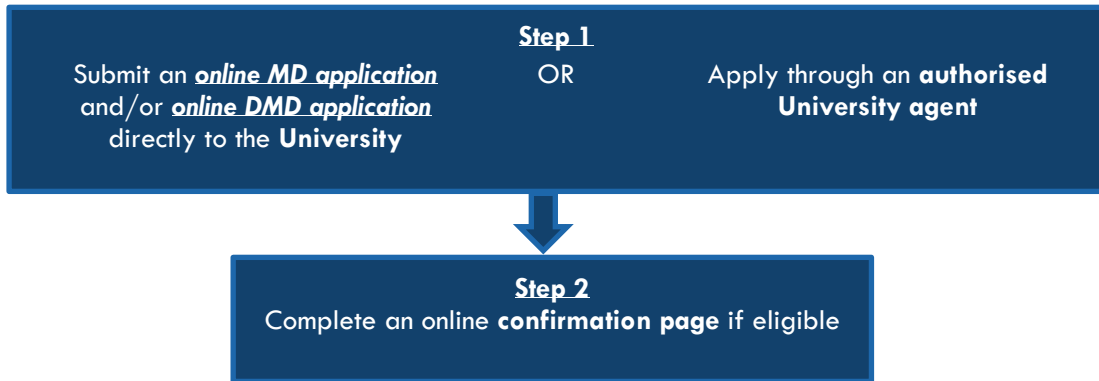
PLEASE NOTE: International applicants considering studying at Sydney Medical School should be very clear that neither the University nor the Medical School can guarantee internships for international graduates. The University has no influence on internships after graduation; the offers of internship in Australia are made by state and Commonwealth governments. There is no anticipated increase in internship places, and applicants accepting a place in the Sydney Medical Program should do so in the knowledge that opportunities for internships in Australia are likely to be extremely competitive or even reduced in future. This needs to be factored into students' study decisions.

Please visit the Health Education and Training Institute (HETI) website for any updates.

Australian-trained international medical graduates may stay on and work as interns in public hospitals and access vocational medical training. This policy however is subject to change. Australian-trained international students should check the current situation at the Department of Home Affairs or contact the department for details.

6. THE APPLICATION PROCESS

6.1 ADMISSIONS STEPS FOR INTERNATIONAL APPLICANTS



Note:

1. Only online applications are accepted
2. Applications received by the University after the deadline will not be considered. If you intend to submit an application through an agent, it is your responsibility to ensure that your agent will complete the required application procedure by the deadline.

6.2 TIMELINE FOR APPLICATIONS

Please refer to the timeline at

<https://www.sydney.edu.au/content/dam/corporate/documents/faculty-of-medicine-and-health/guides/admissions-timeline-md-dmd.pdf>, and remember that dates are subject to change.

6.3 HOW TO USE THE ONLINE SYDNEY STUDENT APPLICATION FORM

6.3.1 BEFORE YOU BEGIN

Please make sure that you have the required documents ready for uploading to the Sydney Student online application system (refer to the [checklist](#)).

You will be required to upload scanned documents to complete your online application. These documents do not need to be certified. Please note the maximum file size is 10MB.

Note:

- 1) The document upload functionality on the application form does not allow for multiple documents to be uploaded using the same upload button. Please combine your documents into a single file where necessary.

- 2) Most MD and DMD applicants DO NOT need to upload any of the following documents as they are not considered in the admissions process:
- evidence of work experience or resumé;
 - information about academic awards or prizes;
 - reference letters and letters of recommendation.

There are two exceptions, as follows:

- Applicants whose bachelor's degree was completed more than 10 years and who need to demonstrate to the satisfaction of the University sustained research productivity in a relevant discipline within this 10-year period; and
- Applicants whose registration in any profession, in Australia or overseas, has been suspended or cancelled or made subject to conditions/undertakings/limitations OR who have been disqualified from applying for registration for, or been the subject of conduct, performance or health proceedings in any profession in Australia or overseas

6.3.2 DOCUMENT SUBMISSION GUIDELINES

During the application process, you may be asked to attach supporting documents. These must be true and complete records. You can scan these documents and upload them online. If your official academic transcripts have an electronic certification feature, please ensure that you upload a copy of the online electronic secured document.

You should be prepared to provide original documents or original certified copies of supporting documents upon request at any time. Failure to do so may result in your candidacy being rejected.

Detailed checking of supporting documents is an inherent element of our admissions process and may involve asking for verification from the original issuing authority, relevant tertiary admissions centre, or other organisation.

Documents submitted in a language other than English must be accompanied by a complete English translation made by an accredited translator with a government body or the Registrar of the issuing institution.

6.3.3 THE ONLINE APPLICATION FORM

If you have not applied for a course at the University before, you will be required to create an account. As part of this process, you will receive several emails confirming your login details.

Please note that some emails/attachments may not be accepted or may be marked as junk or flagged as spam by some mail providers (eg, Hotmail, Yahoo or Gmail) and that some emails may be sent to Outlook's 'Other' inbox if you have the most up to date version of Outlook. If you do not receive any confirmation emails from the University, please check your junk/spam email folder or your Outlook's 'Other' inbox. Applicants are advised not to provide an email address from one of these providers. If you provide your current university email address, please ensure that it will be active until February 2021.

All communication from the University will be via the Sydney Student portal and/or via email. It is the responsibility of applicants to check their accounts and the University will not be held responsible for any unread email communication or for any resulting delays or disadvantage.

Should you need to change your email address at any stage throughout the admissions process, please contact the University Admissions Office via email (see [Contact Us](#) page at the end of this Guide).

NOTE: Most pages of the online form are generic to all University of Sydney applicants. There are several sections that do not apply to MD or DMD applicants.



Applicants can submit only one (1) application for each Course for the same intake. Any subsequent application(s) for the same Course will not be accepted. If you believe you have made a mistake in your application and only realise after you have submitted the application PLEASE DO NOT WITHDRAW YOUR APPLICATION and submit a new application for the same Course. You should outline the amendments you wish to make in a Word document and then upload this document to your submitted application using the 'UPLOAD DOCUMENT' function in Sydney Student.

Please contact the University Admissions Office (see [Contact Us](#) page at the end of this Guide) if you require any assistance with the application form. This may include:

- Uploading documents
- Completing the online form
- Submitting the online form
- Making changes to an application after submission (but prior to the application closing date)

6.3.4 PAGES IN THE ONLINE APPLICATION FORM

YOUR COURSE OPTIONS

Applicants who are applying for both the DMD and MD must submit **two** separate applications, both with complete supporting documentation, by the deadline to ensure that both applications are assessed.

YOUR PERSONAL INFORMATION

- *Given name(s) and Family name:*
Please ensure the name you use in your application is your full legal name as shown on your passport.

SCHOLARSHIPS

Where applicable, applicants may provide such information. Please note that this information does not play any role in the admissions process.

YOUR QUALIFICATIONS

- *Is English your first language?*

If English is your first language, you do not need to provide proof of English language proficiency. If English is not your first language, you must upload proof of English language proficiency eg, official transcripts or IELTS/TOEFL results.

- *Have you ever been excluded or suspended from a course at a tertiary education institution?*

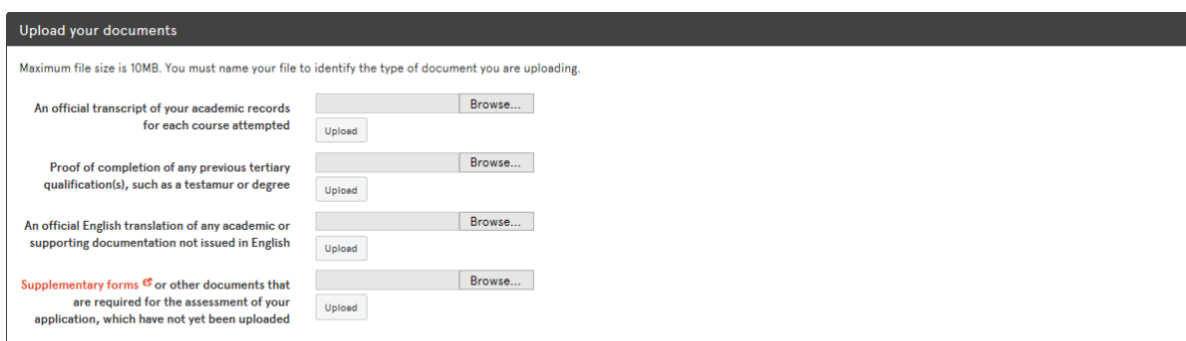
If you have previously been excluded or suspended from a course at a tertiary education institution, you **MUST** upload documents outlining the circumstances.

- *Qualification*

Please provide details **ONLY** of the degrees you have completed or plan to complete before commencing the MD or DMD. Use the check box to 'Add another qualification' for each additional degree.

- *Upload your documents*

Note that supplementary forms are not required for applications to the MD and DMD.



- *Academic prizes or awards*

Details of academic prizes or awards may be required only for applicants whose bachelor's degree was completed more than 10 years before 1 January of the year for which they are seeking enrolment and who need to demonstrate to the satisfaction of the University sustained research productivity in a relevant discipline within this 10-year period.

FURTHER REFERENCES

- *Professional associations*

Details of professional associations are required only for applicants whose registration in any profession, in Australia or overseas, has been suspended or cancelled or made subject to conditions/undertakings/limitations OR who have been disqualified from applying for registration for, or been the subject of conduct, performance or health proceedings in any profession in Australia or overseas.

- *Relevant work experience*

Details of relevant work experience are required only for applicants whose bachelor's degree was completed more than 10 years before 1 January of the year for which they are seeking enrolment and who need to demonstrate to the satisfaction of the University sustained research productivity in a relevant discipline within this 10-year period.

SUPPLEMENTARY QUESTIONS

- *Admissions Guide*
 - *I confirm that I have read and understood all the information outlined in the current Admissions Guide.*

You must tick the box next to the question above in order to proceed with the application.
 - *What is your QAS number?*

International applicants must enter “930000000”.

- *Your admissions test results*

Applicants whose admission test results are not available at the time of application, and who can provide proof of registration for the May/June 2020 sitting of GAMSAT, must provide their GAMSAT results to the University by no later than 29 July 2020.

All other applicants must submit valid admissions test results with their application, as follows:

International applicants to MD: GAMSAT or MCAT

International applicants to DMD: GAMSAT or MCAT or DAT or CDAT

Results from tests taken after the cut-off date will not be considered. Please DO NOT forward any late results to the University.

GAMSAT

To apply in 2020 for admission to the MD and/or DMD commencing in 2021, ONLY results from the following GAMSAT tests can be used: September 2018, March 2019, September 2019, and May/June 2020. Applicants with valid GAMSAT results from September 2018, March 2019 or September 2019 must submit their results with their application. Applicants who are registered to sit the May/June 2020 GAMSAT test must provide their GAMSAT ID on their application form by the application deadline and then forward their GAMSAT results to the University Admissions Office as soon as possible and by no later than 29 July 2020.

Please note that GAMSAT results are valid for two years. If you have more than one set of valid results, provide only the results for the set you want considered. Individual section scores from tests in different years cannot be mixed.

Note that you will be asked to provide your overall GAMSAT score and average GAMSAT score on the online application form, however please be reminded that neither score will play a role in the assessment of applications in 2020 for admission to the MD or DMD in 2021 entry ONLY.

MCAT

The Medical Colleges Admissions Test (MCAT) is held in a number of international locations. If you have more than one set of valid results, provide only the results for the set you want considered. Individual section scores from different tests cannot be mixed. The test date must be between January 2018 and 20 June 2020 (inclusive) for results to be considered. You must enter your correct AAMC ID number and Verification code on your online application form. If you are applying through an agent, you need to ensure that your agent meets these requirements.

DAT and CDAT

For 2021 entry, DAT and CDAT results must have been obtained no earlier than February 2018. Applicants who wish to submit DAT or CDAT results must arrange with the Dental Association for their results to be delivered to the University or University authorised agent by 29 July 2020 OR send the original test results to the University Admissions Office which must be received by 29 July 2020. If you are applying through an agent, you need to ensure that your agent meets these requirements.

- *Previous studies, deferred or suspended place in a medical program/dental program at any higher education institution*

Applicants for the MD:

If you have commenced studies, or currently hold a deferred or suspended place, in a medical program at any higher education institution, you **MUST** answer 'Yes' to the question below, provide further details and upload the required supporting documentation.

Have you ever commenced studies, or do you currently hold a deferred or suspended place in a medical program at any higher education institution? (mandatory question) Yes No

Applicants for the DMD:

If you have commenced studies, or currently hold a deferred or suspended place, in a dental program at any higher education institution, you **MUST** answer 'Yes' to the question below, provide further details and upload the required supporting documentation.

Have you ever commenced studies, or do you currently hold a deferred or suspended place in a dental program at any higher education institution? (mandatory question) Yes No

- *Professional misconduct*

If your registration in any profession, in Australia or overseas, has been suspended or cancelled or made subject to conditions/undertakings/limitations OR if you have been disqualified from applying for registration for, or been the subject of conduct, performance or health proceedings in, any profession in Australia or overseas, you must click 'Yes' to the question below, provide further details and upload supporting documentation:

Q. Has your registration in any profession, in Australia or overseas, been suspended or cancelled or made subject to conditions/undertakings/limitations OR have you been disqualified from applying for registration for, or been the subject of conduct, performance or health proceedings in, any profession in Australia or overseas?

6.3.5 DECLARATION

You will be required to read the following declarations carefully and tick the box below them before submitting your application to confirm that you agree.



Please read these declarations carefully and tick the box below before submitting this application to confirm that you agree. Mandatory fields are marked with an asterisk (*).

I understand	<ul style="list-style-type: none">- That if I fail to provide my true and complete academic record, or I misrepresent or have misrepresented my true circumstances, that I may be excluded from the University of Sydney, and that the University may terminate my studies at any time.- Giving false or misleading information is a serious offence under the Criminal Code of the Commonwealth Government of Australia.- The University of Sydney may vary or cancel any decision it makes if the information I have given is incorrect or incomplete.- All documents submitted become the property of the University of Sydney and will not be returned.- I am fully responsible for my educational and living expenses while studying at the University of Sydney.- Neither the University of Sydney nor the Australian Government can assist me if I do not have sufficient funds to support my candidature.
I authorise	<ul style="list-style-type: none">- The University of Sydney to make any enquiries, including obtaining or verifying any records and/or other information from or with any education institution, tertiary admissions centre or other organisation (whether education or otherwise), or individual, if it considers it necessary in connection with my application, enrolment and/or candidature.
I agree	<ul style="list-style-type: none">- To comply with the rules on admission and enrolment of the University of Sydney as varied from time to time.- To inform the University of Sydney immediately if there is any change to the information I have given in this application.- That the information I have given in this application is true and correct.
I understand and agree to the above * <input type="checkbox"/>	
<p>Back Save and return later Submit</p>	

6.3.6 SUBMITTING YOUR APPLICATION

Once you have completed the application form, you must ensure that you **submit your application**. Do not simply save and exit; this is not the same as submitting your application. Submitting the application includes agreeing to the terms and conditions and declaration. Your application cannot be considered if you do not complete this final step in the application process.

If you have successfully submitted your application, you will receive within 48 hours (excluding weekends), an automated confirmation email containing your 9-digit Student ID number (SID). (For new applicants, the SID will start with 50xxxxxxx. For previous applicants it will be the same SID as per your previous application(s)/enrolment(s).) You will then be able to login to your Sydney Student portal with this Student ID number to view the status of your application. Please check your junk mail folder if you do not receive the email.

In the event that you need to make any changes to your application after submission but prior to the application closing date, DO NOT withdraw the application and attempt to submit a new application. It will not save. Please contact the University Admissions Office (see [Contact Us](#) page at the end of this Guide) and staff will assist you with your changes.

Applicants are encouraged to submit their application as early as possible, so that they will have more time to correct any errors entered on the application form and/or to fix incorrect or incomplete document(s).

If you intend to use May/June 2020 GAMSAT results, you must enter your GAMSAT ID on the application form and then forward the results to the Admissions Office as soon as they become available, and by no later than 29 July 2020.

6.4 COMPLETING A CONFIRMATION PAGE

Applicants who meet the minimum GPA and admissions test requirements (to be determined by the University once all applications have been received) will be required to complete a confirmation page.

NOTE: An invitation to complete the confirmation page does not indicate that an applicant will be made an offer.

All other applicants will be notified that their application has been unsuccessful at the same time.

Eligible applicants will be sent a request via email (NOT via the Sydney Student Portal) to complete the confirmation page. The email will include the deadline by which applicants must submit the confirmation page.

The confirmation page will require eligible applicants to check and confirm the details of their application, pertaining to the admissions criteria set out in this Guide (eg, GPA, GAMSAT/MCAT etc.).

Applicants must check the confirmation page carefully. The information confirmed on the confirmation page will be considered as final, and applications will be processed on the basis of this information.

Applicants who find any incorrect information must submit an error report as instructed on the confirmation page. This must be done prior to the deadline - no changes can be accepted after the deadline. After an error report is submitted, and if there is found to be an error, the error will be corrected, and the applicant will receive a further request and a new deadline (if required) to complete the confirmation page.

Eligible applicants who have applied to both the MD and DMD will be required to complete only one confirmation page. The information confirmed on the confirmation page will be considered by both schools.

6.5 APPLICANTS REQUIRING FURTHER ASSESSMENT

The following applicants who meet the minimum GPA and admissions test requirements will be required to attend an on-line interview as part of the admission process:

1) ***Applicants who have previously been excluded or involuntarily suspended from a course***

Applicants who have previously been excluded or involuntarily suspended from a course at a tertiary education institution must:

- (a) indicate this on their application form; and
- (b) submit documentation detailing the circumstances of the exclusion or involuntarily suspension.

The University will take into account relevant documentation when deciding whether to make an offer of admission to the MD or DMD.

2) ***Applicants whose professional registration been suspended, cancelled or made subject to conditions, or who have been disqualified from applying for professional registration***

Applicants whose registration in any profession, in Australia or overseas, has been suspended or cancelled or made subject to conditions/undertakings/limitations OR who have been disqualified from applying for registration for, or been the subject of conduct, performance or health proceedings in any profession in Australia or overseas must indicate this on their application form and provide relevant documentation.

The University will take into account relevant documentation when deciding whether to make an offer of admission to the MD or DMD.

3) Applicants who have commenced studies*, or hold a deferred or suspended place, in a medical program

Applicants for the MD who have commenced studies, or currently hold a deferred or suspended place, in a medical program (excluding a biomedicine/biomedical science program) at any higher education institution must:

- (a) indicate this on their application form; and
- (b) provide the reason(s) for discontinuation or deferral or suspension; and
- (c) upload the relevant academic transcript or documentation.

Exceptions may apply- see the 'EXCEPTIONS' section below.

The University will take into account an applicant's previous record in a medical program, their reason(s) for discontinuation, deferral or suspension, when deciding whether to make an offer of admission to the MD.

Applicants who have previously applied unsuccessfully for admission to the MD and have commenced studies in postgraduate medicine at another University are not eligible for admission.

*For this purpose, applicants are considered to have commenced their course on the date on which they first enrolled in the medical program.

4) Applicants who have commenced studies*, or hold a deferred or suspended place, in a dental program

Applicants for the DMD who have commenced studies, or currently hold a deferred or suspended place, in a dental program (excluding an oral health program) at any higher education institution must:

- (a) indicate this on their application form; and
- (b) provide the reason(s) for discontinuation or deferral or suspension; and
- (c) upload the relevant academic transcript or documentation.

Exceptions may apply- see the 'EXCEPTIONS' section below.

The University will take into account an applicant's previous record in a dental program, and their reason(s) for discontinuation, deferral or suspension, when deciding whether to make an offer of admission to the DMD.

Applicants who have previously applied unsuccessfully for admission to the DMD and have commenced studies in postgraduate dentistry at another University are not eligible for admission.

*For this purpose, applicants are considered to have commenced their studies on the date on which they first enrolled in the dental program.

Applicants who require an interview will be contacted via email with further details.

EXCEPTIONS

Applicants who hold a deferred place are required to declare their circumstances on the application form and supply supporting documentation. The MD and DMD Admissions Committee Executive will determine whether or not an interview is required. For example, if a deferral is simply to undertake an honours year or postgraduate studies, no interview will be required.

Applicants who are currently completing the final year of an undergraduate degree as part of a double degree medicine or dentistry program will not be required to attend an interview, subject to their performance in their first degree. These applicants should answer NO to the question on the application form: *Have you commenced studies, or do you currently hold a deferred or suspended place in a medical program at any higher education institution? (mandatory question)*

7. APPLICATION CHECKLIST – INTERNATIONAL APPLICANTS

1.	<input type="checkbox"/> Proof of citizenship: You must provide a copy of your valid passport photo page.
2.	<p>If you completed or will complete your bachelor's degree (pass or honours) with at least 2 years of full-time study (or equivalent) at the awarding institution, which is a recognised institution, between 1 January 2011 and 1 January 2021:</p> <p><input type="checkbox"/> If undertaken at the University of Sydney, you do not need to provide your University of Sydney official transcript(s) at the time of application, but you do need to supply all other required documents.</p> <p><input type="checkbox"/> If not undertaken at the University of Sydney, you must provide either:</p> <p>ii) a full OFFICIAL transcript of your academic records for each program attempted at a tertiary level, and proof of qualification for any previous tertiary degree(s) if not stated on your transcripts*; or</p> <p>iii) An academic transcript issued by My eQuals.</p> <p>*An official transcript is a university's certified statement of your academic record. It contains the university seal. It must contain all pages and all results that are available at the time of application. The University of Sydney does not accept internal transcripts, online statements of results, printouts of academic records, or any other unofficial transcript.</p> <p>→Go to Step 5.</p>
3.	<p>If you completed your bachelor's degree (pass or honours) with at least 2 years of full-time study (or equivalent) at the awarding institution, which is a recognised institution, prior to 1 January 2011 and you either have completed/will complete a postgraduate diploma or master's by coursework of at least one year FTE or were awarded/will be awarded a master's degree by research or PhD from a recognised institution between 1 January 2011 and 1 January 2021:</p> <p><input type="checkbox"/> If undertaken at the University of Sydney, you do not need to provide your University of Sydney official transcript(s) at the time of application, but you do need to supply all other required documents.</p> <p><input type="checkbox"/> If not undertaken at the University of Sydney, you must provide either:</p> <p>i) a full OFFICIAL transcript of your academic records for each program attempted at a tertiary level, and proof of qualification for any previous tertiary degree(s) if not stated on your transcripts*; or</p> <p>ii) An academic transcript issued by My eQuals.</p> <p>*An official transcript is a university's certified statement of your academic record. It contains the university seal. It must contain all pages and all results that are available</p>



	<p>at the time of application. The University of Sydney does not accept internal transcripts, online statements of results, printouts of academic records, or any other unofficial transcript.</p> <p>→Go to Step 5.</p>
4.	<p>If you completed your bachelor's degree (pass or honours) with at least 2 years of full-time study (or equivalent) at the awarding institution, which is a recognised institution, prior to 1 January 2011 and you need to demonstrate to the satisfaction of the University sustained research productivity in a relevant discipline within this 10-year period:</p> <p><input type="checkbox"/> You must provide supporting documentation.</p>
5.	<p>When you have valid admissions test results:</p> <p><input type="checkbox"/> If you are providing GAMSAT results, you must enter your correct GAMSAT results on your online application form. If you intend to use May/June 2020 GAMSAT results, you must enter your GAMSAT ID on the application form and then forward the results to the Admissions Office as soon as they become available, and by no later than 29 July 2020.</p> <p><input type="checkbox"/> If you are providing MCAT results, you must enter your correct AAMC ID number and Verification code on your online application form.</p> <p><input type="checkbox"/> If you are providing DAT or CDAT results, you must arrange with the Dental Association for your results to be delivered to the University or authorised University agent by 29 July 2020 OR send the original test results which must be received by the University Admissions Office - Level 4, Jane Foss Russell (G02), The University of Sydney NSW 2006 - by 29 July 2020.</p>
6.	<p>If you are applying for admission to the DMD:</p> <p><input type="checkbox"/> You must provide the required documentation to demonstrate that you will meet the <u>DMD Biology prerequisite</u> by 1 January 2021 eg, transcript and unit of study outline</p>
7.	<p>If you have previously been excluded or suspended from a course at a tertiary education institution:</p> <p><input type="checkbox"/> You must provide documentation outlining the circumstances</p>
8.	<p>If you have commenced studies, or currently hold a deferred or suspended place, in a medical/dental program at any higher education institution:</p> <p><input type="checkbox"/> You must provide a transcript for your previous studies, or provide relevant documentation for deferral or suspension in a medical program/dental program at a tertiary institution.</p>
9.	<p>If your registration in any profession, in Australia or overseas, has been suspended or cancelled or made subject to conditions/undertakings/limitations OR if you have been disqualified from applying for registration for, or been the subject of conduct, performance or health proceedings in, any profession in Australia or overseas:</p> <p><input type="checkbox"/> You must provide documentation regarding your professional misconduct in Australia or overseas.</p>
10.	<p>If English is not your first language:</p>



	<input type="checkbox"/> You must upload proof of <u>English language proficiency</u> eg, official transcripts or IELTS/TOEFL results.
11.	If you have had a change of name: <input type="checkbox"/> You must provide official documentation to verify your change of name.
12.	If any of your documents are in a language other than English: <input type="checkbox"/> You must provide an official/certified English translation of any document not issued in English as well as original language versions of those documents.



Even if you have previously applied for a course at the University of Sydney and provided documents at that time, you must provide all required documents for your new application to the MD/DMD as per the checklist. If you are applying for both the MD and DMD, you must submit two separate applications and upload complete supporting documentation to each application by the deadline.

It is your responsibility to ensure that all necessary documents listed above are uploaded to your application.

8. CONTACT US

STUDENT CENTRE

ONLINE

Make an online enquiry via <http://sydney.edu.au/contact-us.html>

PHONE

1800 SYD UNI (1800 793 864)
+61 2 8627 1444 (outside Australia)

UNIVERSITY ADMISSIONS OFFICE

EMAIL

admissions.medicine@sydney.edu.au for MD
admissions.dentistry@sydney.edu.au for DMD

(in the subject line include your application ID (i.e IPU000xxxxxx) or 9-digit Student ID Number (SID) and that you are an **international** applicant)