

Student News



3 December

Have news? Share it with us



What you need to know for Semester 1, 2021

Units of study will continue to be delivered both on campus and remotely, where possible, due to the ongoing impacts of COVID-19 and travel restrictions. A number of changes are coming to enrolment and timetabling to improve the process in Semester 1, 2021.

Results release

Following changes to our Semester 2 dates this year due to COVID-19, results will be released at different times depending on whether they are for Semester 2 Early or Semester 2 units of study:

- Semester 2 early units – results released 16 December
- Semester 2 units of study – results released 14 January 2021.

[Find out more about result release.](#)

Re-enrolling in Semester 1, 2021

If you're continuing your studies next year, you'll need to have received all your results before being invited to re-enrol for 2021. Make sure you check our [information about re-enrolling](#), as there are some changes for Semester 1.

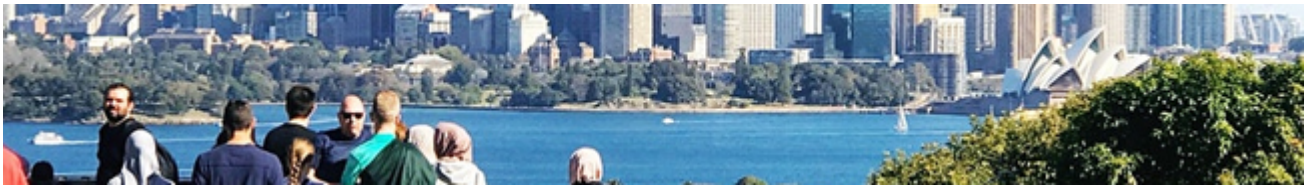
- Many units of study will continue to be available for remote learning (online delivery) during 2021. Make sure you check the location code when selecting your units. If you are unable to travel to campus to attend classes, you need to choose units in Sydney Student where the location is 'RE', meaning Remote.
- We've replaced our existing Special Permission process. If you're eligible to request an exemption from a unit or course rule, you will be prompted to submit a request when you select your units during enrolment. Making these requests will delay your enrolment while the request is reviewed and processed, so it's important to commence your enrolment as early as possible. [Find out more about enrolment exception requests.](#)

New timetabling system

From Semester 1 2021, our brand-new timetabling system, Sydney Timetable, will make it easier for you to plan, schedule and adjust your timetable. [Find out more about the new system.](#)

uni 2 beyond student shares his experience of studying online

As part of International Day of People with Disability, uni 2 beyond student Harry Jerogin [reflects on his educational experience this year.](#)



Get involved

Discover Sydney – Taronga Zoo

- If you're in Sydney over the break, join the STAR team and a small group of international students for an exclusive free visit to Taronga Zoo – home to over 4000 animals, including Australian native animals and exotic species. [Register for the zoo trip on Tuesday 15 December.](#)

USU Welcome Fest callout for clubs and societies

- The USU is planning for Welcome Fest 2021 and are keen to know how your club or society would like to get involved in celebrating Welcome Fest, whether it's with a live performance or a stall on campus. Head over to the USU and [fill out the form.](#)

Applications are open to join the V-Team in 2021

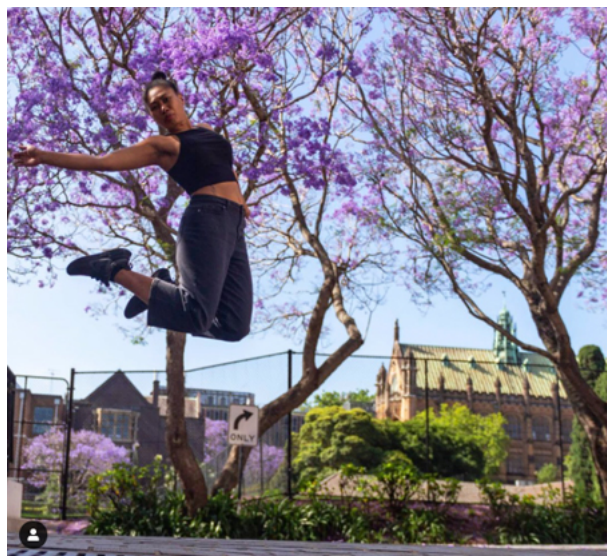
- [Join the USU's volunteer program,](#) the V-Team, next year! Gain valuable volunteer experience, develop professional skills, and make new friends by helping out with all the fun events happening across campus.

Last Reuse Furniture sale of the year

- The University's Reuse Furniture Kiosk at 26 Arundel St, Glebe (back of the Diabetes Building) is having a sale on Thursday 10 December from 10am to 12pm. Items available for purchase include storage cupboards, office chairs, student chairs, tables, bookcases and desks – all items in good condition.

Postgrad migration webinar

- Join SUPRA Legal Service's registered migration agents for a [webinar to find out about student visas](#) and the different visa options available after your studies at 10am on Thursday 10 December.



Insta of the week

That feeling when you finish your last assessment. Good luck with your exams – you're almost there!

Photo credit: [@talau_photoblog](#)

Use [#usydonline](#), or tag [@sydney_uni](#) for your chance to be featured.

Connect with us



[Follow us on Facebook](#)



[Follow us on Instagram](#)



Add us on WeChat



Copyright © 2020 The University of Sydney, NSW 2006 Australia
Phone +61 2 9351 2222 ABN 15 211 513 464 CRICOS Number: 00026A

Please add university.communications@sydney.edu.au to your address book or senders safe list to make sure you continue to see our emails in the future.

Keep in touch



[Disclaimer](#) | [Privacy statement](#) | [University of Sydney](#)